



**Water Monitoring Result at C7 - Windsor House  
Mid-Flood Tide**

Date	Time	Weather Condition	Sampling Depth		Water Temperature			pH			Salinity			DO Saturation			DO			Turbidity			Suspended Solids	
					°C			-			ppt			%			mg/L			NTU			mg/L	
					Value	Average		Value	Average		Value	Average		Value	Average		Value	Average		Value	Average		Value	Average
27/4/2016	10:25	Cloudy	Middle	-	23.30	23.30	23.35	8.29	8.29	8.33	28.78	28.78	28.77	69.2	69.1	68.3	5.00	4.99	4.93	9.61	9.74	9.69	41	<u>27.50</u>
	10:27		Middle	-	23.40	23.40		8.36	8.36		28.76	28.76		68.2	66.6		4.92	4.80		9.73	9.68		14	
29/4/2016	10:45	Fine	Middle	-	23.30	23.30	23.45	8.44	8.44	8.48	30.80	30.80	30.81	72.1	73.6	72.8	5.14	5.25	5.19	18.70	18.93	<u>18.97</u>	10	10.00
	10:47		Middle	-	23.60	23.60		8.51	8.51		30.81	30.81		72.1	73.3		5.14	5.21		19.09	19.14		10	
3/5/2016	14:50	Fine	Middle	-	24.90	24.90	24.90	8.38	8.38	8.40	30.89	30.89	30.89	71.5	71.4	71.2	4.97	4.96	4.94	6.88	6.79	6.85	5	4.00
	14:52		Middle	-	24.90	24.90		8.42	8.42		30.89	30.89		70.3	71.4		4.88	4.96		6.87	6.87		3	
5/5/2016	16:55	Fine	Middle	-	24.90	24.90	24.90	8.35	8.35	8.37	30.39	30.39	30.39	73.4	73.9	73.5	5.11	5.14	5.12	6.88	6.88	6.87	2	2.00
	16:57		Middle	-	24.90	24.90		8.39	8.39		30.39	30.39		73.6	73.1		5.13	5.09		6.85	6.86		2	
7/5/2016	16:50	Cloudy	Middle	-	27.00	27.00	27.05	8.26	8.26	8.27	29.92	29.92	29.93	76.8	76.5	77.0	5.16	5.14	5.17	2.90	2.93	2.95	3	3.50
	16:51		Middle	-	27.10	27.10		8.27	8.27		29.94	29.94		77.2	77.3		5.18	5.19		2.97	3.01		4	
9/5/2016	10:05	Fine	Middle	-	25.60	25.60	25.70	8.44	8.44	8.44	29.68	29.68	29.68	71.4	71.4	70.1	4.92	4.92	4.83	8.74	8.64	8.75	4	3.50
	10:07		Middle	-	25.80	25.80		8.44	8.44		29.68	29.68		68.1	69.4		4.69	4.77		8.77	8.83		3	
11/5/2016	12:00	Fine	Middle	-	25.30	25.30	25.40	8.41	8.41	8.42	29.24	29.24	29.24	69.7	70.9	70.4	4.84	4.92	4.89	6.44	6.64	6.47	7	7.50
	12:02		Middle	-	25.50	25.50		8.42	8.42		29.23	29.23		70.2	70.7		4.87	4.91		6.52	6.29		8	
13/5/2016	11:45	Fine	Middle	-	25.00	25.00	25.00	8.43	8.43	8.44	31.18	31.18	31.18	70.7	70.4	70.4	4.90	4.88	4.88	6.29	6.70	6.50	7	6.50
	11:47		Middle	-	25.00	25.00		8.45	8.45		31.18	31.18		70.2	70.2		4.86	4.86		6.69	6.30		6	
17/5/2016	10:30	Cloudy	Middle	-	25.00	25.00	24.95	8.46	8.46	8.48	31.64	31.64	31.65	73.8	73.3	73.0	5.10	5.06	5.04	4.30	4.38	4.42	7	8.00
	10:32		Middle	-	24.90	24.90		8.49	8.49		31.66	31.66		73.0	71.7		5.04	4.95		4.48	4.51		9	
19/5/2016	17:15	Fine	Middle	-	26.10	26.10	26.10	8.34	8.34	8.40	31.82	31.82	31.82	75.7	75.5	75.7	5.12	5.11	5.13	7.48	7.47	7.52	12	12.00
	17:17		Middle	-	26.10	26.10		8.45	8.45		31.81	31.81		76.1	75.6		5.15	5.12		7.49	7.65		12	
21/5/2016	17:25	Cloudy	Middle	-	26.10	26.10	26.10	8.51	8.51	8.51	30.82	30.85	30.85	76.1	75.9	75.7	5.18	5.17	5.15	6.33	6.28	6.37	5	4.50
	17:26		Middle	-	26.10	26.10		8.51	8.51		30.86	30.86		75.2	75.4		5.11	5.13		6.35	6.50		4	
23/5/2016	17:50	Cloudy	Middle	-	26.50	26.50	26.53	8.40	8.40	8.40	30.87	30.87	30.87	74.8	75.1	74.0	5.05	5.07	4.99	4.77	4.79	4.64	3	3.50
	17:51		Middle	-	26.60	26.50		8.40	8.40		30.86	30.86		72.9	73.1		4.92	4.93		4.75	4.25		4	
25/5/2016	22:22	Cloudy	Middle	-	26.70	26.70	26.75	8.49	8.49	8.49	30.72	30.72	30.72	74.5	74.8	73.7	5.02	5.03	4.96	5.90	5.78	5.83	5	4.50
	22:21		Middle	-	26.80	26.80		8.49	8.49		30.72	30.72		73.5	72.1		4.95	4.85		5.80	5.85		4	

Remarks:  
Single underline denotes exceedance over Action Level.  
Double underline denotes exceedance over Limit Level.



**Water Monitoring Result at C1 - HKCEC Extension  
Mid-Flood Tide**

Date	Time	Weather Condition	Sampling Depth		Water Temperature			pH			Salinity			DO Saturation		DO		Turbidity		Suspended Solids				
					°C			-			ppt			%		mg/L		NTU		mg/L				
			m		Value	Average		Value	Average		Value	Average		Value	Average	Value	Average	Value	Average	Value	Average	Value	Average	
27/4/2016	9:35	Cloudy	Middle	3.0	23.20	23.20	23.05	8.53	8.53	8.53	29.90	29.90	30.11	75.2	75.0	75.3	5.43	5.41	5.44	8.81	8.82	8.80	6	5.50
	9:37		Middle	3.0	22.90	22.90		8.53	8.54		30.32	30.32		75.5	75.6		5.45	5.46		8.79	8.77		5	
29/4/2016	12:38	Fine	Middle	2.5	22.60	22.60	22.60	8.58	8.58	8.58	31.60	31.60	31.60	67.7	67.8	67.6	4.87	4.88	4.87	6.45	6.43	6.43	3	3.50
	12:40		Middle	2.5	22.60	22.60		8.58	8.58		31.59	31.59		67.7	67.3		4.87	4.84		6.43	6.42		4	
3/5/2016	16:24	Fine	Middle	3.5	24.10	24.10	24.05	8.52	8.52	8.53	30.97	30.97	30.97	61.7	62.9	61.6	4.35	4.43	4.34	9.57	9.55	9.46	5	5.00
	16:26		Middle	3.5	24.00	24.00		8.53	8.53		30.97	30.97		61.8	60.0		4.36	4.23		9.54	9.18		5	
5/5/2016	17:45	Fine	Middle	3.0	24.90	24.90	24.95	8.33	8.33	8.38	30.32	30.32	30.32	74.1	73.7	73.8	5.46	5.13	5.21	14.03	14.22	14.09	4	3.50
	17:47		Middle	3.0	25.00	25.00		8.42	8.42		30.31	30.31		73.3	73.9		5.10	5.14		14.08	14.02		3	
7/5/2016	17:16	Cloudy	Middle	2.5	25.90	25.90	25.70	8.46	8.46	8.47	29.07	29.07	29.09	60.4	61.4	62.0	4.20	4.27	4.31	10.22	10.08	10.08	5	4.50
	17:18		Middle	2.5	25.50	25.50		8.47	8.47		29.10	29.10		63.2	63.0		4.39	4.37		10.07	9.94		4	
9/5/2016	8:50	Fine	Middle	3.0	24.00	24.00	24.60	8.40	8.40	8.40	30.36	30.36	30.35	69.1	70.3	69.7	4.81	4.89	4.83	12.54	12.54	<u>12.51</u>	9	9.00
	8:52		Middle	3.0	25.20	25.20		8.40	8.40		30.34	30.34		70.1	69.1		4.80	4.80		12.51	12.43		9	
11/5/2016	11:18	Fine	Middle	2.5	24.70	24.70	24.65	8.48	8.48	8.48	29.85	29.85	29.88	61.0	59.7	60.4	4.29	4.19	4.24	3.56	3.63	3.57	4	4.00
	11:20		Middle	2.5	24.60	24.60		8.48	8.48		29.90	29.90		60.6	60.2		4.25	4.23		3.64	3.45		4	
13/5/2016	10:57	Fine	Middle	2.5	24.30	24.30	24.30	8.52	8.52	8.52	31.30	31.30	31.31	64.1	63.7	63.7	4.49	4.46	4.46	2.73	2.64	2.68	4	4.00
	10:59		Middle	2.5	24.30	24.30		8.52	8.52		31.31	31.31		63.4	63.6		4.44	4.46		2.66	2.68		4	
17/5/2016	-	Cloudy	Middle	-	-	-	#DIV/0!	-	-	#DIV/0!	-	-	#DIV/0!	-	-	#DIV/0!	-	-	#DIV/0!	-	-	#DIV/0!	-	#DIV/0!
	-		Middle	-	-	-		-	-		-	-		-	-		-	-		-	-		-	
19/5/2016	-	Fine	Middle	-	-	-	0.00	-	-	#DIV/0!	-	-	#DIV/0!	-	-	#DIV/0!	-	-	#DIV/0!	-	-	#DIV/0!	-	#DIV/0!
	-		Middle	-	0.00	-		-	-		-	-		-	-		-	-		-	-		-	
21/5/2016	16:37	Cloudy	Middle	2.5	25.70	25.70	25.70	8.55	8.55	8.56	30.32	30.32	30.44	63.5	61.8	61.6	4.36	4.25	4.23	3.99	3.99	3.86	4	4.50
	16:39		Middle	2.5	25.70	25.70		8.56	8.56		30.55	30.55		60.9	60.1		4.18	4.13		3.46	4.00		5	
23/5/2016	20:52	Cloudy	Middle	2.0	25.80	25.80	25.90	8.40	8.40	8.44	31.36	31.36	31.35	73.6	73.0	72.9	5.01	4.97	4.96	8.54	8.46	8.50	9	8.00
	20:53		Middle	2.0	26.00	26.00		8.48	8.48		31.34	31.34		72.6	72.5		4.94	4.93		8.51	8.48		7	
25/5/2016	21:32	Cloudy	Middle	2.0	26.80	26.80	26.80	8.52	8.52	8.52	31.08	31.08	31.08	71.9	71.5	70.7	4.82	4.80	4.74	6.36	6.08	6.18	8	8.00
	21:33		Middle	2.0	26.80	26.80		8.52	8.52		31.08	31.08		70.0	69.3		4.70	4.65		6.10	6.19		8	

Remarks:  
Single underline denotes exceedance over Action Level.  
Double underline denotes exceedance over Limit Level.



**Water Monitoring Result at P1 - HKCEC Phase I  
Mid-Flood Tide**

Date	Time	Weather Condition	Sampling Depth		Water Temperature			pH			Salinity			DO Saturation			DO			Turbidity			Suspended Solids	
					°C			-			ppt			%			mg/L			NTU			mg/L	
			m		Value	Average		Value	Average		Value	Average		Value	Average		Value	Average		Value	Average		Value	Average
27/4/2016	9:15	Cloudy	Middle	3.0	23.80	23.80	23.85	8.42	8.42	8.44	29.65	29.65	29.65	75.4	76.2	75.5	5.38	5.43	5.38	6.71	6.68	6.69	6	6.00
	9:17		Middle	3.0	23.90	23.90		8.46	8.46		29.64	29.64		75.1	75.4		5.35	5.37		6.69	6.69		6	
29/4/2016	12:22	Fine	Middle	2.5	23.70	23.70	23.75	8.45	8.45	8.47	31.31	31.31	31.31	62.6	62.6	63.2	4.42	4.42	4.46	7.34	7.38	7.41	3	3.50
	12:24		Middle	2.5	23.80	23.80		8.48	8.48		31.30	31.30		63.1	64.3		4.45	4.54		7.45	7.47		4	
3/5/2016	-	Fine	Middle	-	-	-	#DIV/0!	-	-	#DIV/0!	-	-	#DIV/0!	-	-	#DIV/0!	-	-	#DIV/0!	-	-	#DIV/0!	-	#DIV/0!
	-		Middle	-	-	-		-	-		-	-		-	-		-	-		-	-		-	
5/5/2016	18:05	Fine	Middle	3.0	24.30	24.30	24.30	8.48	8.48	8.49	30.34	30.34	30.34	69.2	68.4	68.7	4.88	4.82	4.84	10.53	10.74	10.62	3	3.50
	18:07		Middle	3.0	24.30	24.30		8.50	8.49		30.34	30.34		68.7	68.4		4.83	4.81		10.69	10.53		4	
7/5/2016	17:08	Cloudy	Middle	2.5	26.70	26.70	26.80	8.39	8.39	8.41	29.46	29.46	29.47	54.2	53.3	54.0	3.68	3.61	3.66	10.52	10.37	10.42	7	7.00
	17:10		Middle	2.5	26.90	26.90		8.42	8.42		29.47	29.47		53.8	54.6		3.65	3.71		10.55	10.23		7	
9/5/2016	8:30	Fine	Middle	3.0	25.20	25.20	25.25	8.47	8.47	8.48	30.07	30.07	30.07	73.1	73.8	72.8	5.07	5.12	5.06	12.57	12.55	<u>12.55</u>	5	6.00
	8:32		Middle	3.0	25.30	25.30		8.48	8.48		30.06	30.06		73.1	71.2		5.07	4.97		12.54	12.54		7	
11/5/2016	11:02	Fine	Middle	2.5	26.00	26.00	26.15	8.36	8.36	8.39	29.97	29.97	29.85	60.7	63.2	61.9	4.15	4.31	4.22	3.65	3.65	3.66	5	4.50
	11:04		Middle	2.5	26.30	26.30		8.40	8.42		29.73	29.73		62.1	61.5		4.23	4.19		3.67	3.66		4	
13/5/2016	10:41	Fine	Middle	2.5	24.90	24.90	24.90	8.41	8.41	8.43	31.29	31.29	31.29	57.6	57.9	57.0	3.99	3.98	3.94	1.88	1.92	1.90	4	4.00
	10:43		Middle	2.5	24.90	24.90		8.44	8.44		31.29	31.29		56.5	55.9		3.91	3.87		1.87	1.94		4	
17/5/2016	-	Cloudy	Middle	-	-	-	#DIV/0!	-	-	#DIV/0!	-	-	#DIV/0!	-	-	#DIV/0!	-	-	#DIV/0!	-	-	#DIV/0!	-	#DIV/0!
	-		Middle	-	-	-		-	-		-	-		-	-		-	-		-	-		-	
19/5/2016	-	Fine	Middle	-	-	-	#DIV/0!	-	-	#DIV/0!	-	-	#DIV/0!	-	-	#DIV/0!	-	-	#DIV/0!	-	-	#DIV/0!	-	#DIV/0!
	-		Middle	-	-	-		-	-		-	-		-	-		-	-		-	-			
21/5/2016	16:21	Cloudy	Middle	2.5	26.10	26.10	26.20	8.45	8.45	8.47	30.56	30.56	30.54	60.6	60.3	60.1	4.13	4.11	4.09	4.03	3.98	4.00	6	5.50
	16:23		Middle	2.5	26.30	26.30		8.49	8.49		30.52	30.52		60.0	59.3		4.09	4.04		3.94	4.06		5	
23/5/2016	20:25	Cloudy	Middle	2.0	26.20	26.20	26.20	8.52	8.52	8.53	31.12	31.12	31.12	71.2	70.8	70.6	4.83	4.80	4.79	6.52	6.54	6.48	4	3.50
	20:26		Middle	2.0	26.20	26.20		8.54	8.54		31.12	31.12		70.3	70.0		4.77	4.75		6.57	6.29		3	
25/5/2016	20:59	Cloudy	Middle	2.0	27.00	27.00	27.00	8.55	8.55	8.55	30.82	30.82	30.82	69.5	70.6	70.5	4.66	4.73	4.73	5.47	5.56	5.47	7	7.00
	21:00		Middle	2.0	27.00	27.00		8.55	8.55		30.82	30.82		70.8	70.9		4.75	4.76		5.44	5.42		7	

Remarks:  
Single underline denotes exceedance over Action Level.  
Double underline denotes exceedance over Limit Level.



**Water Monitoring Result at P3 - APA  
Mid-Flood Tide**

Date	Time	Weather Condition	Sampling Depth		Water Temperature			pH			Salinity			DO Saturation		DO		Turbidity		Suspended Solids				
					°C			-			ppt			%		mg/L		NTU		mg/L				
			m	Value	Average	Value	Average	Value	Average	Value	Average	Value	Average	Value	Average	Value	Average	Value	Average	Value	Average			
27/4/2016	9:20	Cloudy	Middle	3.0	23.40	23.40	23.50	8.47	8.47	8.48	29.84	29.84	29.84	77.1	77.0	76.7	5.52	5.51	5.51	5.76	5.78	5.79	5	4.50
	9:22		Middle	3.0	23.60	23.60		8.49	8.49		29.84	29.84		77.0	75.7		5.51	5.49		5.79	5.83		4	
29/4/2016	12:26	Fine	Middle	2.5	22.70	22.70	22.80	8.51	8.51	8.52	31.50	31.50	31.50	67.2	66.1	66.1	4.82	4.74	4.74	6.14	6.38	6.31	4	3.50
	12:28		Middle	2.5	22.90	22.90		8.53	8.53		31.49	31.49		65.7	65.2		4.71	4.68		6.41	6.31		3	
3/5/2016	16:12	Fine	Middle	3.5	24.30	24.30	24.35	8.39	8.39	8.42	31.03	31.03	30.99	62.1	61.2	60.1	4.35	4.29	4.21	6.87	6.84	6.81	5	5.00
	16:14		Middle	3.5	24.40	24.40		8.45	8.45		30.95	30.95		59.3	57.7		4.15	4.04		6.79	6.74		5	
5/5/2016	18:00	Fine	Middle	3.0	24.20	24.20	24.25	8.48	8.48	8.48	30.32	30.32	30.32	71.0	70.3	70.6	5.00	4.95	4.98	11.02	11.00	11.09	7	6.50
	18:02		Middle	3.0	24.30	24.30		8.48	8.48		30.32	30.32		70.1	71.1		4.94	5.01		11.16	11.16		6	
7/5/2016	17:12	Cloudy	Middle	2.5	25.90	25.90	25.85	8.44	8.44	8.45	29.39	29.39	29.39	64.3	62.8	62.2	4.43	4.33	4.28	12.56	12.56	<u>12.56</u>	6	6.00
	17:14		Middle	2.5	25.80	25.80		8.45	8.45		29.39	29.39		61.4	60.1		4.23	4.14		12.55	12.56		6	
9/5/2016	8:35	Fine	Middle	3.0	25.30	25.30	25.25	8.48	8.48	8.49	30.22	30.22	30.21	73.9	74.0	73.7	5.13	5.14	5.12	13.59	13.50	<u>13.70</u>	7	7.00
	8:37		Middle	3.0	25.20	25.20		8.50	8.50		30.20	30.20		73.2	73.8		5.08	5.13		13.89	13.81		7	
11/5/2016	11:06	Fine	Middle	2.5	25.70	25.70	25.55	8.42	8.42	8.43	29.52	29.52	29.74	63.0	61.1	60.3	4.36	4.23	4.18	3.45	3.49	3.39	4	4.50
	11:08		Middle	2.5	25.40	25.40		8.44	8.44		29.96	29.96		59.6	57.5		4.13	3.98		3.31	3.32		5	
13/5/2016	10:45	Fine	Middle	2.5	24.50	24.50	24.45	8.46	8.46	8.47	31.25	31.25	31.26	66.7	65.7	65.9	4.67	4.60	4.61	2.44	2.69	2.49	3	4.00
	10:47		Middle	2.5	24.40	24.40		8.47	8.47		31.27	31.27		65.8	65.5		4.61	4.57		2.37	2.46		5	
17/5/2016	-	Cloudy	Middle	-	-	-	#DIV/0!	-	-	#DIV/0!	-	-	#DIV/0!	-	-	#DIV/0!	-	-	#DIV/0!	-	-	#DIV/0!	-	#DIV/0!
	-		Middle	-	-	-		-	-		-	-		-	-		-	-		-	-		-	
19/5/2016	-	Fine	Middle	-	-	-	#DIV/0!	-	-	#DIV/0!	-	-	#DIV/0!	-	-	#DIV/0!	-	-	#DIV/0!	-	-	#DIV/0!	-	#DIV/0!
	-		Middle	-	-	-		-	-		-	-		-	-		-	-		-	-		-	
21/5/2016	16:25	Cloudy	Middle	2.5	25.90	25.90	25.90	8.51	8.51	8.52	30.47	30.47	30.53	65.0	64.4	64.5	4.44	4.41	4.42	4.84	4.83	4.89	7	6.50
	16:27		Middle	2.5	25.90	25.90		8.52	8.52		30.58	30.58		64.0	64.6		4.39	4.42		4.95	4.94		6	
23/5/2016	20:30	Cloudy	Middle	2.0	26.10	26.10	26.15	8.55	8.55	8.55	31.18	31.18	31.18	70.2	71.0	70.2	4.73	4.82	4.78	6.50	6.44	6.34	5	4.50
	20:31		Middle	2.0	26.20	26.20		8.55	8.55		31.18	31.18		70.0	69.7		4.82	4.73		6.22	6.20		4	
25/5/2016	21:06	Cloudy	Middle	2.0	26.90	26.90	26.90	8.55	8.55	8.55	30.85	30.85	30.85	69.2	70.5	70.3	4.65	4.74	4.73	5.63	5.76	5.83	4	3.50
	21:07		Middle	2.0	26.90	26.90		8.55	8.55		30.85	30.85		70.8	70.7		4.76	4.75		5.94	5.98		3	

Remarks:  
Single underline denotes exceedance over Action Level.  
Double underline denotes exceedance over Limit Level.



**Water Monitoring Result at P4 - SOC  
Mid-Flood Tide**

Date	Time	Weather Condition	Sampling Depth		Water Temperature			pH			Salinity			DO Saturation		DO		Turbidity		Suspended Solids				
					°C			-			ppt			%		mg/L		NTU		mg/L				
			m	Value	Average	Value	Average	Value	Average	Value	Average	Value	Average	Value	Average	Value	Average	Value	Average	Value	Average			
27/4/2016	9:25	Cloudy	Middle	3.0	23.60	23.60	23.55	8.47	8.49	8.50	29.86	29.86	29.87	77.8	77.3	76.7	5.58	5.54	5.50	5.65	5.65	5.65	6	5.50
	9:27		Middle	3.0	23.50	23.50		8.51	8.51		29.87	29.87		75.6	76.2		5.41	5.46		5.65	5.66		5	
29/4/2016	12:30	Fine	Middle	2.5	22.70	22.70	22.70	8.53	8.53	8.54	31.64	31.64	31.66	72.0	71.4	71.3	5.18	5.13	5.12	5.94	5.94	5.94	3	3.00
	12:32		Middle	2.5	22.70	22.70		8.55	8.55		31.67	31.67		70.8	70.8		5.08	5.09		5.94	5.94		3	
3/5/2016	16:16	Fine	Middle	3.5	24.60	24.60	24.40	8.46	8.46	8.48	30.98	30.98	30.98	66.4	65.9	65.6	4.66	4.63	4.61	6.55	6.59	6.59	7	6.00
	16:18		Middle	3.5	24.20	24.20		8.49	8.49		30.97	30.97		65.6	64.6		4.61	4.54		6.66	6.55		5	
5/5/2016	17:55	Fine	Middle	3.0	24.70	24.70	24.70	8.46	8.46	8.46	30.34	30.34	30.34	76.3	75.4	75.8	5.33	5.27	5.30	13.81	13.72	13.80	7	7.00
	17:57		Middle	3.0	24.70	24.70		8.46	8.46		30.34	30.34		75.6	76.0		5.29	5.31		13.83	13.84		7	
7/5/2016	-	Cloudy	Middle	-	-	-	#DIV/0!	-	-	#DIV/0!	-	-	#DIV/0!	-	-	#DIV/0!	-	-	#DIV/0!	-	-	#DIV/0!	-	#DIV/0!
	-		Middle	-	-	-		-	-		-	-		-	-		-	-		-	-		-	
9/5/2016	8:40	Fine	Middle	3.0	25.10	25.10	25.15	8.50	8.50	8.51	30.30	30.30	30.36	75.4	75.6	75.3	5.23	5.24	5.22	13.00	12.89	<u>12.84</u>	8	7.00
	8:42		Middle	3.0	25.20	25.20		8.51	8.51		30.41	30.41		75.4	74.7		5.23	5.18		12.67	12.78		6	
11/5/2016	11:10	Fine	Middle	2.5	25.00	25.00	25.00	8.45	8.45	8.46	29.67	29.67	29.78	65.6	64.3	64.0	4.57	4.48	4.46	3.58	3.37	3.43	4	4.50
	11:12		Middle	2.5	25.00	25.00		8.46	8.46		29.88	29.88		63.0	63.0		4.40	4.39		3.36	3.40		5	
13/5/2016	10:49	Fine	Middle	2.5	24.30	24.30	24.30	8.48	8.48	8.49	31.26	31.26	31.28	64.6	66.4	64.2	4.52	4.65	4.50	2.73	2.66	2.58	4	4.00
	10:51		Middle	2.5	24.30	24.30		8.50	8.50		31.29	31.29		63.9	62.0		4.47	4.34		2.55	2.37		4	
17/5/2016	-	Cloudy	Middle	-	-	-	#DIV/0!	-	-	#DIV/0!	-	-	#DIV/0!	-	-	#DIV/0!	-	-	#DIV/0!	-	-	#DIV/0!	-	#DIV/0!
	-		Middle	-	-	-		-	-		-	-		-	-		-	-		-	-		-	
19/5/2016	-	Fine	Middle	-	-	-	#DIV/0!	-	-	#DIV/0!	-	-	#DIV/0!	-	-	#DIV/0!	-	-	#DIV/0!	-	-	#DIV/0!	-	#DIV/0!
	-		Middle	-	-	-		-	-		-	-		-	-		-	-		-	-		-	
21/5/2016	16:29	Cloudy	Middle	2.5	25.90	25.90	25.95	8.52	8.53	8.53	30.49	30.49	30.50	62.0	61.0	60.7	4.24	4.17	4.15	4.92	4.90	4.94	3	3.50
	16:31		Middle	2.5	26.00	26.00		8.53	8.53		30.51	30.51		60.5	59.4		4.13	4.06		4.93	5.00		4	
23/5/2016	20:37	Cloudy	Middle	2.0	26.10	26.10	26.15	8.58	8.58	8.58	31.31	31.31	31.25	74.5	77.3	75.6	5.05	5.24	5.12	6.86	6.83	6.79	8	8.50
	20:38		Middle	2.0	26.20	26.20		8.58	8.58		31.19	31.19		75.5	75.1		5.11	5.08		6.82	6.66		9	
25/5/2016	21:13	Cloudy	Middle	2.0	26.80	26.80	26.85	8.56	8.56	8.56	31.18	31.18	31.18	80.7	81.4	80.7	5.41	5.46	5.41	8.53	8.75	8.72	9	9.50
	21:14		Middle	2.0	26.90	26.90		8.56	8.56		31.18	31.18		80.8	79.7		5.42	5.34		8.83	8.77		10	

Remarks:  
Single underline denotes exceedance over Action Level.  
Double underline denotes exceedance over Limit Level.



**Water Monitoring Result at P5 - WCT / RT / IT  
Mid-Flood Tide**

Date	Time	Weather Condition	Sampling Depth		Water Temperature			pH			Salinity			DO Saturation		DO		Turbidity		Suspended Solids				
					°C			-			ppt			%		mg/L		NTU		mg/L				
			Value	Average	Value	Average	Value	Average	Value	Average	Value	Average	Value	Average	Value	Average	Value	Average	Value	Average	Value	Average		
27/4/2016	9:30	Cloudy	Middle	3.0	23.40	23.40	23.30	8.52	8.52	8.52	29.76	29.76	29.87	75.8	74.2	74.5	5.46	5.34	5.36	9.48	9.14	9.18	6	5.50
	9:32		Middle	3.0	23.20	23.20		8.52	8.52		29.97	29.97		73.8	74.3		5.31	5.34		9.00	9.09		5	
29/4/2016	12:34	Fine	Middle	2.5	22.60	22.60	22.60	8.56	8.56	8.56	31.50	31.50	31.55	68.3	68.2	67.0	4.92	4.91	4.83	6.24	5.92	5.99	4	4.00
	12:36		Middle	2.5	22.60	22.60		8.56	8.56		31.59	31.59		66.5	65.1		4.79	4.70		5.93	5.87		4	
3/5/2016	16:20	Fine	Middle	3.5	24.00	24.00	24.05	8.50	8.50	8.51	30.97	30.97	30.97	68.0	67.2	66.4	4.79	4.74	4.68	9.00	9.00	9.01	4	5.00
	16:22		Middle	3.5	24.10	24.10		8.52	8.52		30.97	30.97		65.9	64.3		4.64	4.53		9.01	9.02		6	
5/5/2016	17:50	Fine	Middle	3.0	24.60	24.60	24.60	8.44	8.44	8.45	30.30	30.30	30.30	72.0	71.9	71.6	5.04	5.03	5.01	12.54	12.36	12.25	7	7.00
	17:52		Middle	3.0	24.60	24.60		8.46	8.46		30.30	30.30		70.5	71.9		4.94	5.03		12.06	12.05		7	
7/5/2016	-	Cloudy	Middle	-	-	-	#DIV/0!	-	-	#DIV/0!	-	-	#DIV/0!	-	-	#DIV/0!	-	-	#DIV/0!	-	-	#DIV/0!	-	#DIV/0!
	-		Middle	-	-	-		-	-		-	-		-	-		-	-		-	-		-	
9/5/2016	8:45	Fine	Middle	3.0	25.00	25.00	25.00	8.51	8.51	8.52	30.29	30.29	255.32	73.7	74.6	74.1	5.13	5.19	5.16	12.54	12.40	<u>12.44</u>	7	6.50
	8:47		Middle	3.0	25.00	25.00		8.52	8.52		30.30	930.39		73.9	74.1		5.14	5.16		12.26	12.54		6	
11/5/2016	11:14	Fine	Middle	2.5	24.80	24.80	24.80	8.46	8.46	8.47	29.82	29.82	29.72	65.0	63.5	62.4	4.55	4.45	4.38	3.59	3.69	3.65	3	3.50
	11:16		Middle	2.5	24.80	24.80		8.47	8.47		29.86	29.39		60.9	60.3		4.27	4.23		3.67	3.65		4	
13/5/2016	10:53	Fine	Middle	2.5	24.30	24.30	24.30	8.50	8.50	8.51	30.79	30.79	31.03	66.0	64.5	64.5	4.62	4.51	4.52	2.69	2.55	2.66	5	5.00
	10:55		Middle	2.5	24.30	24.30		8.51	8.51		31.27	31.27		63.6	63.9		4.46	4.47		2.69	2.70		5	
17/5/2016	-	Cloudy	Middle	-	-	-	#DIV/0!	-	-	#DIV/0!	-	-	#DIV/0!	-	-	#DIV/0!	-	-	#DIV/0!	-	-	#DIV/0!	-	#DIV/0!
	-		Middle	-	-	-		-	-		-	-		-	-		-	-		-	-		-	
19/5/2016	-	Fine	Middle	-	-	-	#DIV/0!	-	-	#DIV/0!	-	-	#DIV/0!	-	-	#DIV/0!	-	-	#DIV/0!	-	-	#DIV/0!	-	#DIV/0!
	-		Middle	-	-	-		-	-		-	-		-	-		-	-		-	-			
21/5/2016	16:33	Cloudy	Middle	2.5	25.80	25.80	25.75	8.54	8.54	8.55	30.51	30.51	30.53	66.6	63.8	63.4	4.57	4.38	4.35	4.55	4.40	4.45	5	5.00
	16:35		Middle	2.5	25.70	25.70		8.55	8.55		30.55	30.55		62.3	60.7		4.28	4.17		4.40	4.43		5	
23/5/2016	20:44	Cloudy	Middle	2.0	25.90	25.90	25.95	8.56	8.56	8.57	31.35	31.35	31.35	70.8	71.5	70.9	4.81	4.86	4.82	7.09	6.69	6.96	6	6.50
	20:45		Middle	2.0	26.00	26.00		8.57	8.57		31.35	31.35		70.9	70.3		4.82	4.77		7.02	7.04		7	
25/5/2016	21:22	Cloudy	Middle	2.0	26.80	26.80	26.80	8.58	8.58	8.58	31.20	31.20	31.20	69.3	68.5	69.4	4.65	4.60	4.66	8.88	8.76	8.66	7	7.50
	21:23		Middle	2.0	26.80	26.80		8.58	8.58		31.20	31.20		70.0	69.7		4.70	4.68		8.61	8.40		8	

Remarks:  
Single underline denotes exceedance over Action Level.  
Double underline denotes exceedance over Limit Level.



**Water Monitoring Result at RW21-P789 - Sun Hung Kai Centre  
Mid-Flood Tide**

Date	Time	Weather Condition	Sampling Depth		Water Temperature			pH			Salinity			DO Saturation		DO		Turbidity		Suspended Solids				
					°C			-			ppt			%		mg/L		NTU		mg/L				
			m	Value	Average	Value	Average	Value	Average	Value	Average	Value	Average	Value	Average	Value	Average	Value	Average	Value	Average			
27/4/2016	10:00	Cloudy	Middle	4.0	22.50	22.50	22.60	8.41	8.41	8.44	30.27	30.27	30.27	74.9	75.1	74.6	5.43	5.45	5.41	7.27	7.26	7.29	4	3.50
	10:02		Middle	4.0	22.70	22.70		8.47	8.47		30.26	30.26		74.2	74.0		5.38	5.37		7.30	7.32		3	
29/4/2016	12:49	Fine	Middle	3.5	22.60	22.50	22.58	8.59	8.59	8.59	31.73	31.73	31.78	68.1	66.1	66.2	4.90	4.76	4.77	11.48	11.28	<u>11.26</u>	11	10.50
	12:51		Middle	3.5	22.60	22.60		8.59	8.59		31.83	31.83		65.4	65.1		4.71	4.69		11.12	11.14		10	
3/5/2016	14:30	Fine	Middle	3.5	24.90	24.90	25.00	8.46	8.46	8.47	30.59	30.59	30.58	61.3	60.8	60.8	4.25	4.22	4.22	8.16	8.17	8.09	6	5.50
	14:32		Middle	3.5	25.10	25.10		8.48	8.48		30.57	30.57		60.6	60.4		4.20	4.19		8.12	7.89		5	
5/5/2016	16:25	Fine	Middle	4.0	24.20	24.20	24.25	8.41	8.41	8.44	30.13	30.13	30.13	70.3	69.9	69.8	4.97	4.93	4.92	12.28	12.51	<u>12.46</u>	7	8.00
	16:27		Middle	4.0	24.30	24.30		8.46	8.46		30.12	30.12		70.1	68.9		4.94	4.85		12.52	12.53		9	
7/5/2016	17:25	Cloudy	Middle	3.0	26.40	26.40	26.55	8.44	8.44	8.45	29.50	29.51	29.51	76.0	76.2	75.4	5.14	5.15	5.10	6.52	6.57	6.48	9	8.50
	17:26		Middle	3.0	26.70	26.70		8.46	8.46		29.51	29.51		75.1	74.1		5.08	5.01		6.44	6.40		8	
9/5/2016	9:05	Fine	Middle	4.0	25.10	25.10	25.20	8.40	8.40	8.42	30.14	30.14	30.14	75.3	74.6	74.5	5.22	5.17	5.16	13.46	13.61	<u>13.55</u>	7	7.00
	9:07		Middle	4.0	25.30	25.30		8.44	8.44		30.13	30.13		74.5	73.5		5.16	5.10		13.61	13.52		7	
11/5/2016	11:30	Fine	Middle	3.5	24.50	24.50	24.55	8.42	8.42	8.44	30.03	30.03	30.02	57.4	57.8	58.3	4.03	4.09	4.10	3.43	3.47	3.52	4	4.00
	11:32		Middle	3.5	24.60	24.60		8.45	8.45		30.00	30.00		59.0	59.0		4.15	4.14		3.49	3.70		4	
13/5/2016	11:07	Fine	Middle	3.5	24.40	24.40	24.40	8.44	8.44	8.46	31.37	31.37	31.37	57.4	56.4	56.3	4.01	3.94	3.93	3.00	3.12	3.10	7	6.00
	11:09		Middle	3.5	24.40	24.40		8.47	8.47		31.37	31.37		55.9	55.3		3.90	3.87		3.13	3.13		5	
17/5/2016	9:58	Cloudy	Middle	3.5	24.90	24.90	24.95	8.28	8.28	8.36	32.73	32.73	32.70	73.2	72.1	71.5	5.03	4.95	4.91	3.13	3.11	3.08	4	4.50
	10:00		Middle	3.5	25.00	25.00		8.43	8.43		32.66	32.66		70.3	70.3		4.83	4.83		3.05	3.02		5	
19/5/2016	16:15	Fine	Middle	3.5	26.00	26.00	26.05	8.44	8.44	8.47	31.85	31.85	31.85	66.2	64.8	63.9	4.48	4.39	4.33	3.80	3.71	3.86	4	4.00
	16:17		Middle	3.5	26.10	26.10		8.50	8.50		31.84	31.84		62.7	61.8		4.24	4.19		3.95	3.97		4	
21/5/2016	17:56	Cloudy	Middle	3.0	25.90	25.90	25.95	8.47	8.47	8.48	31.00	31.00	31.00	79.1	78.4	78.2	5.39	5.34	5.33	7.76	7.45	7.50	5	5.00
	17:57		Middle	3.0	26.00	26.00		8.48	8.48		30.99	30.99		77.2	78.2		5.26	5.31		7.41	7.39		5	
23/5/2016	18:30	Cloudy	Middle	3.0	26.60	26.60	26.65	8.21	8.21	8.24	30.85	30.85	30.86	76.4	75.7	75.4	5.14	5.10	5.08	7.93	7.71	7.70	8	7.50
	18:31		Middle	3.0	26.70	26.70		8.26	8.26		30.86	30.86		75.2	74.3		5.07	5.00		7.55	7.62		7	
25/5/2016	21:47	Cloudy	Middle	3.0	26.60	26.60	26.65	8.37	8.37	8.40	30.69	30.39	30.61	70.6	70.1	70.7	4.76	4.72	4.76	4.98	4.84	4.95	4	3.50
	21:48		Middle	3.0	26.70	26.70		8.43	8.43		30.68	30.68		70.8	71.1		4.77	4.79		4.96	5.03		3	

Remarks:  
Single underline denotes exceedance over Action Level.  
Double underline denotes exceedance over Limit Level.



**Water Monitoring Result at WSD19 - Sheung Wan  
Mid-Flood Tide**

Date	Time	Weather Condition	Sampling Depth		Water Temperature			pH			Salinity			DO Saturation			DO			Turbidity			Suspended Solids	
					°C			-			ppt			%			mg/L			NTU			mg/L	
					Value	Average		Value	Average		Value	Average		Value	Average		Value	Average		Value	Average		Value	Average
27/4/2016	8:00	Cloudy	Middle	4.0	23.40	23.40	23.50	8.39	8.39	8.42	28.71	28.71	28.71	76.6	77.7	77.2	5.52	5.60	5.56	8.41	8.22	8.26	6	5.50
	8:02		Middle	4.0	23.60	23.60		8.44	8.44		28.71	28.71		77.6	76.7		5.59	5.52		8.20	8.21		5	
29/4/2016	11:46	Fine	Middle	3.5	23.00	23.00	23.10	8.34	8.34	8.38	31.37	31.37	31.36	65.2	66.2	67.3	4.66	4.73	4.81	9.94	9.93	9.93	8	7.00
	11:48		Middle	3.5	23.20	23.20		8.42	8.42		31.34	31.34		68.4	69.5		4.89	4.97		9.91	9.92		6	
3/5/2016	15:20	Fine	Middle	3.5	24.30	24.30	24.35	8.38	8.38	8.41	30.85	30.85	30.86	78.4	78.5	78.3	5.50	5.51	5.49	10.81	10.92	<u>10.91</u>	8	7.00
	15:25		Middle	3.5	24.40	24.40		8.44	8.44		30.86	30.86		78.4	77.8		5.50	5.46		10.93	10.97		6	
5/5/2016	15:35	Fine	Middle	3.5	24.90	24.90	24.95	8.54	8.54	8.53	30.36	30.36	30.36	76.6	75.6	75.7	5.34	5.26	5.26	12.78	12.77	<u>12.79</u>	4	4.50
	15:37		Middle	3.5	25.00	25.00		8.51	8.51		30.36	30.36		75.4	75.0		5.25	5.20		12.78	12.81		5	
7/5/2016	20:00	Cloudy	Middle	3.0	25.90	25.90	26.00	8.34	8.34	8.35	30.11	30.10	30.10	79.0	78.3	78.6	5.37	5.34	5.35	8.26	8.17	8.14	12	11.00
	20:01		Middle	3.0	26.10	26.10		8.36	8.36		30.08	30.09		79.5	77.6		5.42	5.28		8.02	8.11		10	
9/5/2016	7:10	Fine	Middle	3.5	25.10	25.10	25.15	8.39	8.39	8.41	30.63	30.63	30.63	75.3	74.7	74.6	5.22	5.17	5.17	13.89	13.89	<u>13.88</u>	13	13.00
	7:12		Middle	3.5	25.20	25.20		8.43	8.43		30.63	30.63		74.4	74.0		5.16	5.13		13.87	13.86		13	
11/5/2016	8:10	Fine	Middle	3.5	24.10	24.10	24.15	8.21	8.21	8.26	28.36	28.36	28.36	60.1	60.1	61.4	4.29	4.29	4.38	1.37	1.37	1.34	4	3.50
	8:11		Middle	3.5	24.20	24.20		8.31	8.31		28.35	28.35		62.2	63.1		4.44	4.50		1.31	1.32		3	
13/5/2016	10:03	Fine	Middle	3.5	24.60	24.60	24.60	8.41	8.41	8.43	30.68	30.68	30.69	58.6	58.0	57.9	4.10	4.06	4.05	7.08	7.07	7.07	4	4.00
	10:05		Middle	3.5	24.60	24.60		8.44	8.44		30.69	30.69		57.7	57.4		4.03	4.01		7.07	7.07		4	
17/5/2016	-	Cloudy	Middle	-	-	-	#DIV/0!	-	-	#DIV/0!	-	-	#DIV/0!	-	-	#DIV/0!	-	-	#DIV/0!	-	-	#DIV/0!	-	#DIV/0!
	-		Middle	-	-	-		-	-		-	-		-	-		-	-		-	-		-	
19/5/2016	-	Fine	Middle	-	-	-	#DIV/0!	-	-	#DIV/0!	-	-	#DIV/0!	-	-	#DIV/0!	-	-	#DIV/0!	-	-	#DIV/0!	-	#DIV/0!
	-		Middle	-	-	-		-	-		-	-		-	-		-	-		-	-		-	
21/5/2016	19:05	Cloudy	Middle	3.0	26.10	26.10	26.10	8.29	8.29	8.31	31.97	31.97	31.96	79.5	80.7	80.1	5.37	5.45	5.42	6.52	6.54	6.40	5	5.00
	19:06		Middle	3.0	26.10	26.10		8.32	8.32		31.95	31.95		79.9	80.1		5.40	5.47		6.35	6.20		5	
23/5/2016	19:25	Cloudy	Middle	2.5	26.10	26.10	26.15	8.41	8.41	8.42	31.21	31.21	31.21	74.0	75.5	75.4	5.01	5.11	5.11	9.63	9.51	9.54	9	9.00
	19:26		Middle	2.5	26.20	26.20		8.43	8.43		31.21	31.21		75.9	76.2		5.15	5.16		9.58	9.44		9	
25/5/2016	19:48	Cloudy	Middle	3.0	26.90	26.90	26.95	8.36	8.36	8.38	30.70	30.70	30.70	76.9	77.5	76.6	5.16	5.20	5.14	6.40	6.38	6.40	6	6.00
	19:49		Middle	3.0	27.00	27.00		8.39	8.39		30.69	30.69		77.1	74.7		5.18	5.01		6.37	6.43		6	

Remarks:  
Single underline denotes exceedance over Action Level.  
Double underline denotes exceedance over Limit Level.





**Water Monitoring Result at C7 - Windsor House  
Mid-Ebb Tide**

Date	Time	Weather Condition	Sampling Depth		Water Temperature		pH			Salinity		DO Saturation		DO		Turbidity		Suspended Solids						
					°C		-		ppt		%		mg/L		NTU		mg/L							
					Value	Average	Value	Average	Value	Average	Value	Average	Value	Average	Value	Average	Value	Average						
27/4/2016	14:45	Fine	Middle	-	24.00	24.00	24.15	8.21	8.21	8.26	29.09	29.09	29.08	71.5	72.8	72.4	5.09	5.17	5.14	7.19	7.16	7.15	34	<u>20.00</u>
	14:47		Middle	-	24.30	24.30		8.31	8.31		29.07	29.07		72.8	72.3		5.17	5.13		7.14	7.11		6	
29/4/2016	15:45	Fine	Middle	-	23.00	23.00	23.10	8.44	8.44	8.47	31.36	31.36	31.36	74.5	74.2	74.2	5.32	5.29	5.30	11.15	11.30	<u>11.39</u>	6	5.00
	15:47		Middle	-	23.20	23.20		8.49	8.49		31.36	31.36		74.2	74.0		5.30	5.28		11.53	11.56		4	
3/5/2016	11:00	Fine	Middle	-	24.50	24.50	24.60	8.28	8.28	8.34	31.06	31.06	31.06	75.6	74.4	74.1	5.27	5.19	5.17	10.07	10.07	10.07	8	8.00
	11:02		Middle	-	24.70	24.70		8.39	8.39		31.05	31.05		73.2	73.2		5.10	5.10		10.07	10.08		8	
5/5/2016	10:28	Fine	Middle	-	24.80	24.80	24.85	8.30	8.30	8.33	30.74	30.74	30.73	71.2	70.5	69.3	4.95	4.90	4.82	8.24	8.62	8.55	4	4.00
	10:30		Middle	-	24.90	24.90		8.35	8.35		30.72	30.72		68.8	66.8		4.79	4.65		8.78	8.57		4	
7/5/2016	11:55	Fine	Middle	-	25.30	25.30	25.35	8.32	8.32	8.35	30.21	30.21	30.21	72.6	72.4	72.2	5.02	5.01	4.99	11.11	11.13	11.13	6	5.00
	11:57		Middle	-	25.40	25.40		8.38	8.38		30.21	30.21		71.8	72.0		4.96	4.97		11.10	11.17		4	
9/5/2016	11:45	Fine	Middle	-	26.70	26.70	26.70	8.17	8.17	8.23	30.18	30.18	30.18	73.6	74.1	73.6	4.99	5.02	4.98	10.58	10.61	10.58	5	6.00
	11:47		Middle	-	26.70	26.70		8.29	8.29		30.18	30.18		73.2	73.5		4.95	4.97		10.56	10.55		7	
11/5/2016	17:15	Fine	Middle	-	25.00	25.00	25.05	8.38	8.38	8.40	29.54	29.54	29.54	69.8	69.9	69.5	4.87	4.88	4.85	3.73	3.68	3.68	4	3.50
	17:17		Middle	-	25.10	25.10		8.42	8.42		29.54	29.54		69.5	68.9		4.85	4.81		3.66	3.65		3	
13/5/2016	18:17	Fine	Middle	-	24.80	24.80	24.90	8.36	8.36	8.42	31.21	31.21	31.21	68.9	70.8	70.3	4.78	4.90	4.87	2.49	2.50	2.47	7	6.00
	18:19		Middle	-	25.00	25.00		8.48	8.48		31.21	31.21		70.5	70.8		4.88	4.90		2.51	2.39		5	
17/5/2016	14:50	Fine	Middle	-	25.10	25.10	25.10	8.51	8.51	8.53	31.68	31.68	31.68	75.6	75.7	75.5	5.21	5.21	5.20	8.55	8.54	8.54	4	4.50
	14:52		Middle	-	25.10	25.10		8.54	8.54		31.68	31.68		75.5	75.3		5.20	5.19		8.52	8.53		5	
19/5/2016	11:00	Fine	Middle	-	25.60	25.60	25.65	8.49	8.49	8.51	31.91	31.91	31.92	72.9	73.1	73.2	4.96	4.98	4.98	3.35	3.30	3.30	6	5.00
	11:02		Middle	-	25.70	25.70		8.52	8.52		31.95	31.91		73.3	73.5		4.99	5.00		3.28	3.28		4	
21/5/2016	14:45	Cloudy	Middle	-	26.20	26.20	26.25	8.34	8.34	8.38	30.97	30.97	30.98	71.6	71.2	71.1	4.85	4.83	4.82	9.12	9.06	9.10	7	7.00
	14:47		Middle	-	26.30	26.30		8.42	8.42		30.98	30.98		70.9	70.7		4.80	4.79		9.11	9.11		7	
23/5/2016	11:30	Fine	Middle	-	26.70	26.70	26.75	8.40	8.40	8.42	30.74	30.74	30.74	73.5	72.3	73.0	4.95	4.87	4.92	3.70	3.68	3.68	3	3.00
	11:32		Middle	-	26.80	26.80		8.43	8.43		30.74	30.74		73.3	72.9		4.94	4.91		3.66	3.66		3	
25/5/2016	16:20	Fine	Middle	-	27.10	27.10	27.20	8.38	8.38	8.40	30.50	30.50	30.51	70.8	70.9	70.7	4.74	4.74	4.73	4.31	4.30	4.30	5	4.50
	16:22		Middle	-	27.30	27.30		8.42	8.42		30.51	30.51		70.5	70.6		4.71	4.72		4.29	4.29		4	

Remarks:  
Single underline denotes exceedance over Action Level.  
Double underline denotes exceedance over Limit Level.



**Water Monitoring Result at C1 - HKCEC  
Mid-Ebb Tide**

Date	Time	Weather Condition	Sampling Depth		Water Temperature		pH			Salinity		DO Saturation		DO		Turbidity		Suspended Solids						
					°C		-		ppt		%		mg/L		NTU		mg/L							
			m		Value	Average	Value	Average	Value	Average	Value	Average	Value	Average	Value	Average	Value	Average	Value	Average				
27/4/2016	16:20	Fine	Middle	3.5	23.80	23.80	23.85	8.52	8.52	8.53	28.96	28.96	28.97	63.7	63.1	62.8	4.55	4.51	4.48	7.20	7.13	7.14	4	4.50
	16:22		Middle	3.5	23.90	23.90		8.53	8.53		28.97	28.97		62.7	61.5		4.48	4.39		7.15	7.08		5	
29/4/2016	17:40	Fine	Middle	2.5	22.40	22.40	22.45	8.60	8.60	8.60	31.70	31.70	31.72	69.0	67.5	67.0	4.97	4.85	4.85	7.68	8.18	7.81	3	3.50
	17:42		Middle	2.5	22.50	22.50		8.60	8.60		31.73	31.73		66.4	65.2		4.87	4.70		7.71	7.66		4	
3/5/2016	10:40	Fine	Middle	3.5	24.00	24.00	24.00	8.53	8.53	8.53	31.00	31.00	31.00	65.1	64.0	63.5	4.59	4.52	4.48	6.49	6.48	6.47	3	3.00
	10:42		Middle	3.5	24.00	24.00		8.53	8.53		31.00	31.00		62.6	62.1		4.41	4.38		6.46	6.45		3	
5/5/2016	-	Fine	Middle	-	-	-	#DIV/0!	-	-	#DIV/0!	-	-	#DIV/0!	-	-	#DIV/0!	-	-	#DIV/0!	-	-	#DIV/0!	-	#DIV/0!
	-		Middle	-	-	-		-	-		-	-		-	-		-	-		-	-		-	
7/5/2016	14:00	Fine	Middle	2.5	25.90	25.90	25.95	8.46	8.46	8.46	29.67	29.67	29.67	61.1	60.7	60.6	4.19	4.17	4.16	11.79	11.63	<b>11.66</b>	5	4.50
	14:02		Middle	2.5	26.00	26.00		8.46	8.46		29.66	29.66		60.2	60.4		4.13	4.14		11.62	11.60		4	
9/5/2016	14:55	Fine	Middle	3.5	25.60	25.60	25.60	8.49	8.49	8.49	29.55	29.55	29.55	73.7	74.0	74.2	5.10	5.12	5.13	3.25	3.37	3.31	4	4.00
	14:57		Middle	3.5	25.60	25.60		8.49	8.49		29.55	29.55		74.7	74.5		5.16	5.15		3.31	3.31		4	
11/5/2016	16:39	Fine	Middle	2.5	24.60	24.60	24.60	8.49	8.49	8.50	29.65	29.65	29.67	62.9	62.2	62.3	4.43	4.37	4.38	2.88	3.00	2.90	2	2.50
	16:41		Middle	2.5	24.60	24.60		8.50	8.50		29.68	29.68		61.6	62.5		4.33	4.39		2.76	2.97		3	
13/5/2016	16:19	Fine	Middle	3.0	25.00	25.00	25.00	8.55	8.55	8.55	31.57	31.57	31.57	66.9	70.3	68.4	4.82	4.86	4.77	1.69	1.54	1.62	7	6.50
	16:21		Middle	3.0	25.00	25.00		8.55	8.55		31.57	31.57		69.2	67.1		4.77	4.63		1.66	1.57		6	
17/5/2016	-	Fine	Middle	-	-	-	#DIV/0!	-	-	#DIV/0!	-	-	#DIV/0!	-	-	#DIV/0!	-	-	#DIV/0!	-	-	#DIV/0!	-	#DIV/0!
	-		Middle	-	-	-		-	-		-	-		-	-		-	-		-	-		-	
19/5/2016	-	Fine	Middle	-	-	-	#DIV/0!	-	-	#DIV/0!	-	-	#DIV/0!	-	-	#DIV/0!	-	-	#DIV/0!	-	-	#DIV/0!	-	#DIV/0!
	-		Middle	-	-	-		-	-		-	-		-	-		-	-		-	-			
21/5/2016	14:06	Cloudy	Middle	3.5	25.50	25.50	25.50	8.54	8.54	8.54	30.48	30.48	30.60	65.9	64.1	64.4	4.53	4.41	4.43	7.37	7.49	7.42	6	5.00
	14:08		Middle	3.5	25.50	25.50		8.54	8.54		30.71	30.71		63.4	64.3		4.36	4.42		7.43	7.38		4	
23/5/2016	14:50	Fine	Middle	2.5	26.00	26.00	26.05	8.52	8.52	8.53	30.40	30.40	30.42	64.6	64.8	63.8	4.41	4.42	4.36	5.92	5.88	5.93	5	4.50
	14:52		Middle	2.5	26.10	26.10		8.53	8.53		30.43	30.43		64.2	61.6		4.38	4.21		5.99	5.94		4	
25/5/2016	15:30	Fine	Middle	3.0	26.90	26.90	26.95	8.51	8.51	8.51	30.29	30.29	30.29	75.3	75.0	74.6	5.07	5.05	5.02	4.48	4.51	4.59	6	6.00
	15:32		Middle	3.0	27.00	27.00		8.51	8.51		30.28	30.28		74.0	74.0		4.98	4.98		4.67	4.68		6	

Remarks:  
Single underline denotes exceedance over Action Level.  
Double underline denotes exceedance over Limit Level.



**Water Monitoring Result at P1 - HKCEC Phase I  
Mid-Ebb Tide**

Date	Time	Weather Condition	Sampling Depth		Water Temperature		pH			Salinity		DO Saturation		DO		Turbidity		Suspended Solids						
					°C		-		ppt		%		mg/L		NTU		mg/L							
			m		Value	Average	Value	Average	Value	Average	Value	Average	Value	Average	Value	Average	Value	Average	Value	Average				
27/4/2016	16:04	Fine	Middle	3.5	24.50	24.50	24.48	8.34	8.34	8.37	29.18	29.18	29.15	68.0	69.3	69.1	4.80	4.89	4.88	5.12	5.11	5.15	4	4.00
	16:06		Middle	3.5	24.30	24.60		8.40	8.40		29.11	29.11		70.0	69.0		4.94	4.87		5.17	5.18		4	
29/4/2016	17:26	Fine	Middle	2.5	22.70	22.70	22.70	8.49	8.49	8.51	31.76	31.76	31.74	71.4	72.0	55.4	5.14	5.17	5.14	7.06	6.96	7.02	3	3.50
	17:28		Middle	2.5	22.70	22.70		8.52	8.52		31.71	31.71		7.2	71.1		5.15	5.11		6.99	7.06		4	
3/5/2016	-	Fine	Middle	-	-	-	#DIV/0!	-	-	#DIV/0!	-	-	#DIV/0!	-	-	#DIV/0!	-	-	#DIV/0!	-	-	#DIV/0!	-	#DIV/0!
	-		Middle	-	-	-		-	-		-	-		-	-		-	-		-	-		-	
5/5/2016	13:05	Fine	Middle	2.5	24.70	24.70	24.80	8.47	8.47	8.48	30.11	30.11	30.11	74.3	74.1	74.1	5.20	5.19	5.18	7.95	7.99	8.00	<2	<2
	13:07		Middle	2.5	24.90	24.90		8.48	8.48		30.11	30.11		74.2	73.6		5.20	5.14		8.01	8.03		<2	
7/5/2016	14:04	Fine	Middle	2.5	25.70	25.70	25.85	8.27	8.27	8.33	29.88	29.88	29.76	64.0	63.5	63.2	4.41	4.37	4.35	8.83	8.82	8.83	4	4.00
	14:06		Middle	2.5	26.00	26.00		8.39	8.39		29.63	29.63		63.0	62.1		4.33	4.27		8.82	8.84		4	
9/5/2016	14:39	Fine	Middle	3.5	26.60	26.60	26.65	8.36	8.36	8.39	29.61	29.61	29.61	74.8	72.1	71.7	5.09	4.90	4.87	3.22	3.22	3.15	4	4.00
	14:41		Middle	3.5	26.70	26.70		8.41	8.41		29.60	29.60		70.9	69.0		4.81	4.69		3.14	3.03		4	
11/5/2016	16:23	Fine	Middle	2.5	25.20	25.20	25.25	8.40	8.40	8.41	29.47	29.47	29.50	60.8	64.7	62.9	4.23	4.50	4.38	2.38	2.37	2.40	3	4.00
	16:25		Middle	2.5	25.30	25.30		8.42	8.42		29.52	29.52		63.4	62.8		4.41	4.37		2.37	2.46		5	
13/5/2016	16:03	Fine	Middle	3.0	24.90	24.90	25.00	8.38	8.38	8.42	31.59	31.59	31.58	72.5	71.0	71.2	5.00	4.90	4.91	3.24	3.23	3.12	3	3.00
	16:05		Middle	3.0	25.10	25.10		8.45	8.45		31.56	31.56		71.3	70.0		4.92	4.83		3.05	2.95		3	
17/5/2016	-	Fine	Middle	-	-	-	#DIV/0!	-	-	#DIV/0!	-	-	#DIV/0!	-	-	#DIV/0!	-	-	#DIV/0!	-	-	#DIV/0!	-	#DIV/0!
	-		Middle	-	-	-		-	-		-	-		-	-		-	-		-	-		-	
19/5/2016	-	Fine	Middle	-	-	-	#DIV/0!	-	-	#DIV/0!	-	-	#DIV/0!	-	-	#DIV/0!	-	-	#DIV/0!	-	-	#DIV/0!	-	#DIV/0!
	-		Middle	-	-	-		-	-		-	-		-	-		-	-		-	-		-	
21/5/2016	13:50	Cloudy	Middle	3.5	26.00	26.00	26.05	8.45	8.45	8.47	30.86	30.86	30.84	66.2	67.7	67.5	4.51	4.61	4.59	4.04	4.02	4.09	5	4.00
	13:52		Middle	3.5	26.10	26.10		8.48	8.48		30.82	30.82		68.8	67.1		4.68	4.57		4.14	4.14		3	
23/5/2016	14:34	Fine	Middle	2.5	26.90	26.90	26.95	8.50	8.50	8.50	30.54	30.54	30.53	66.5	67.4	66.7	4.47	4.52	4.48	5.29	5.31	5.31	5	5.00
	14:36		Middle	2.5	27.00	27.00		8.50	8.50		30.52	30.52		66.5	66.3		4.46	4.45		5.32	5.30		5	
25/5/2016	15:10	Fine	Middle	3.0	28.50	28.50	28.65	8.47	8.47	8.47	30.50	30.50	30.50	78.9	79.0	78.7	5.15	5.16	5.14	5.03	4.93	4.99	5	5.50
	15:12		Middle	3.0	28.80	28.80		8.47	8.47		30.49	30.49		78.2	78.8		5.10	5.14		5.04	4.96		6	

Remarks:  
Single underline denotes exceedance over Action Level.  
Double underline denotes exceedance over Limit Level.



**Water Monitoring Result at P3 - APA  
Mid-Ebb Tide**

Date	Time	Weather Condition	Sampling Depth		Water Temperature		pH			Salinity		DO Saturation		DO		Turbidity		Suspended Solids						
					°C		-		ppt		%		mg/L		NTU		mg/L							
			m		Value	Average	Value	Average	Value	Average	Value	Average	Value	Average	Value	Average	Value	Average	Value	Average				
27/4/2016	16:08	Fine	Middle	3.5	24.10	24.10	24.00	8.44	8.44	8.46	28.91	28.91	28.92	66.0	65.3	65.7	4.72	4.67	4.70	4.62	4.62	4.64	4	4.00
	16:10		Middle	3.5	23.90	23.90		8.48	8.48		28.92	28.92		65.9	65.7		4.71	4.70		4.67	4.63		4	
29/4/2016	17:30	Fine	Middle	2.5	22.30	22.30	22.30	8.55	8.55	8.56	31.66	31.66	31.68	71.0	69.6	69.1	5.14	5.04	5.00	5.97	5.95	5.93	3	3.00
	17:32		Middle	2.5	22.30	22.30		8.57	8.57		31.69	31.69		68.3	67.3		4.94	4.87		5.92	5.89		3	
3/5/2016	10:28	Fine	Middle	3.5	24.50	24.50	24.50	8.47	8.47	8.48	31.11	31.11	31.07	64.7	63.4	63.1	4.53	4.43	4.41	4.91	4.91	5.01	3	3.00
	10:30		Middle	3.5	24.50	24.50		8.49	8.49		31.02	31.02		62.5	61.9		4.36	4.31		5.19	5.04		3	
5/5/2016	12:50	Fine	Middle	2.5	25.60	25.60	25.70	8.37	8.37	8.40	30.16	30.16	30.16	74.7	75.2	75.3	5.14	5.17	5.18	8.84	8.71	8.82	3	3.00
	12:52		Middle	2.5	25.80	25.80		8.42	8.42		30.16	30.16		76.1	75.2		5.23	5.17		8.80	8.92		3	
7/5/2016	14:08	Fine	Middle	2.5	25.70	25.70	25.65	8.38	8.38	8.40	29.25	29.25	29.37	64.9	63.7	63.4	4.50	4.42	4.40	12.56	12.53	<b>12.58</b>	4	5.00
	14:10		Middle	2.5	25.60	25.60		8.41	8.41		29.49	29.49		63.0	62.1		4.37	4.30		12.64	12.59		6	
9/5/2016	14:43	Fine	Middle	3.5	25.90	25.90	26.00	8.44	8.44	8.45	29.53	29.53	29.53	73.9	73.1	71.8	5.08	5.02	4.93	2.97	2.98	2.90	4	4.50
	14:45		Middle	3.5	26.10	26.10		8.45	8.45		29.53	29.53		70.7	69.4		4.85	4.76		2.87	2.77		5	
11/5/2016	16:27	Fine	Middle	2.5	24.60	24.60	24.60	8.44	8.44	8.45	29.74	29.74	29.74	66.6	65.4	65.8	4.68	4.60	4.62	2.74	2.74	2.75	2	3.00
	16:29		Middle	2.5	24.60	24.60		8.46	8.46		29.73	29.73		66.4	64.7		4.66	4.54		2.75	2.75		4	
13/5/2016	16:07	Fine	Middle	3.0	24.70	24.70	24.75	8.47	8.47	8.49	31.54	31.54	31.54	70.4	70.4	70.1	4.89	4.89	4.86	2.72	2.73	2.73	3	3.00
	16:09		Middle	3.0	24.80	24.80		8.50	8.50		31.53	31.53		69.4	70.0		4.81	4.85		2.74	2.74		3	
17/5/2016	-	Fine	Middle	-	-	-	#DIV/0!	-	-	#DIV/0!	-	-	#DIV/0!	-	-	#DIV/0!	-	-	#DIV/0!	-	-	#DIV/0!	-	#DIV/0!
	-		Middle	-	-	-	-	-	-	-	-	-	-	-	-	-	-	-	-	-	-	-	-	-
19/5/2016	-	Fine	Middle	-	-	-	#DIV/0!	-	-	#DIV/0!	-	-	#DIV/0!	-	-	#DIV/0!	-	-	#DIV/0!	-	-	#DIV/0!	-	#DIV/0!
	-		Middle	-	-	-	-	-	-	-	-	-	-	-	-	-	-	-	-	-	-	-	-	-
21/5/2016	13:54	Cloudy	Middle	3.5	26.10	26.10	25.95	8.49	8.49	8.50	30.75	70.75	40.76	68.1	67.6	67.2	4.66	4.63	4.60	3.70	3.72	3.73	4	4.50
	13:56		Middle	3.5	25.80	25.80		8.51	8.51		30.76	30.76		67.0	66.0		4.58	4.52		3.74	3.77		5	
23/5/2016	14:38	Fine	Middle	2.5	26.30	26.30	26.35	8.51	8.51	8.52	30.49	30.49	30.48	61.2	62.5	62.8	4.15	4.24	4.26	5.66	5.63	5.64	6	5.00
	14:40		Middle	2.5	26.40	26.40		8.52	8.52		30.46	30.46		63.4	64.1		4.30	4.35		5.63	5.62		4	
25/5/2016	15:15	Fine	Middle	3.0	28.00	28.00	27.75	8.48	8.48	8.49	30.09	30.09	30.20	78.1	78.1	77.7	5.22	5.22	5.19	5.35	5.38	5.36	5	6.00
	15:17		Middle	3.0	27.50	27.50		8.49	8.49		30.31	30.31		77.5	76.9		5.17	5.13		5.36	5.34		7	

Remarks:  
Single underline denotes exceedance over Action Level.  
Double underline denotes exceedance over Limit Level.



**Water Monitoring Result at P4 - SOC  
Mid-Ebb Tide**

Date	Time	Weather Condition	Sampling Depth		Water Temperature		pH			Salinity		DO Saturation		DO		Turbidity		Suspended Solids						
					°C		-		ppt		%		mg/L		NTU		mg/L							
			m	Value	Average	Value	Average	Value	Average	Value	Average	Value	Average	Value	Average	Value	Average	Value	Average					
27/4/2016	16:12	Fine	Middle	3.5	23.90	23.90	23.95	8.49	8.49	8.50	28.90	28.90	28.90	69.3	68.8	69.4	4.95	4.91	4.96	5.73	5.73	5.75	3	3.00
	16:14		Middle	3.5	24.00	24.00		8.51	8.51		28.89	28.89		69.7	69.8		4.98	4.99		5.73	5.81		3	
29/4/2016	17:34	Fine	Middle	2.5	22.30	22.30	22.30	8.57	8.57	8.58	31.66	31.66	31.68	72.0	71.6	70.8	5.21	5.18	5.13	5.80	5.77	5.78	4	3.50
	17:36		Middle	2.5	22.30	22.30		8.59	8.59		31.69	31.69		70.3	69.4		5.09	5.02		5.77	5.79		3	
3/5/2016	10:32	Fine	Middle	3.5	24.20	24.20	24.15	8.50	8.50	8.51	31.00	31.00	31.01	66.7	65.5	64.8	4.69	4.61	4.56	7.06	7.06	7.19	5	4.50
	10:34		Middle	3.5	24.10	24.10		8.51	8.51		31.02	31.02		64.3	62.6		4.52	4.40		7.34	7.31		4	
5/5/2016	12:55	Fine	Middle	2.5	25.00	25.00	25.10	8.45	8.45	8.46	30.08	30.08	30.08	76.8	77.2	76.6	5.34	5.36	5.32	9.41	9.33	9.31	3	3.00
	12:57		Middle	2.5	25.20	25.20		8.46	8.46		30.08	30.08		76.2	76.2		5.29	5.29		9.27	9.21		3	
7/5/2016	13:53	Fine	Middle	2.5	26.00	26.00	26.00	8.42	8.42	8.43	29.61	29.61	29.62	62.5	60.9	59.8	4.29	4.18	4.11	11.51	11.56	11.54	5	5.50
	13:55		Middle	2.5	26.00	26.00		8.44	8.44		29.63	29.63		58.5	57.4		4.01	3.94		11.63	11.47		6	
9/5/2016	14:47	Fine	Middle	3.5	25.90	25.90	25.90	8.46	8.46	8.47	29.48	29.48	29.48	70.3	72.3	71.3	4.84	4.98	4.91	3.36	3.31	3.35	4	4.50
	14:49		Middle	3.5	25.90	25.90		8.47	8.47		29.48	29.48		71.7	70.7		4.93	4.87		3.36	3.36		5	
11/5/2016	16:31	Fine	Middle	2.5	24.70	24.70	24.75	8.47	8.47	8.48	29.51	29.51	29.57	66.0	64.0	63.1	4.63	4.48	4.42	2.64	2.75	2.71	2	3.00
	16:33		Middle	2.5	24.80	24.80		8.48	8.48		29.63	29.63		61.8	60.4		4.33	4.23		2.71	2.73		4	
13/5/2016	16:11	Fine	Middle	3.0	24.60	24.60	24.60	8.51	8.51	8.52	31.56	31.56	31.56	73.2	73.3	73.1	5.09	5.09	5.08	2.75	2.86	2.79	5	5.50
	16:13		Middle	3.0	24.60	24.60		8.52	8.52		31.56	31.56		73.4	72.5		5.10	5.05		2.78	2.77		6	
17/5/2016	-	Fine	Middle	-	-	-	#DIV/0!	-	-	#DIV/0!	-	-	#DIV/0!	-	-	#DIV/0!	-	-	#DIV/0!	-	-	#DIV/0!	-	#DIV/0!
	-		Middle	-	-	-	-	-	-	-	-	-	-	-	-	-	-	-	-	-	-	-	-	-
19/5/2016	-	Fine	Middle	-	-	-	#DIV/0!	-	-	#DIV/0!	-	-	#DIV/0!	-	-	#DIV/0!	-	-	#DIV/0!	-	-	#DIV/0!	-	#DIV/0!
	-		Middle	-	-	-	-	-	-	-	-	-	-	-	-	-	-	-	-	-	-	-	-	-
21/5/2016	13:58	Cloudy	Middle	3.5	25.80	25.80	25.75	8.52	8.52	8.53	30.12	30.12	30.35	68.0	67.2	66.4	4.67	4.61	4.56	3.51	3.37	3.39	3	4.00
	14:00		Middle	3.5	25.70	25.70		8.53	8.53		30.58	30.58		65.5	65.0		4.49	4.46		3.37	3.32		5	
23/5/2016	14:42	Fine	Middle	2.5	26.40	26.40	26.30	8.52	8.52	8.52	30.22	30.22	30.32	62.2	62.4	61.6	4.24	4.25	4.19	4.85	4.82	4.81	4	4.50
	14:44		Middle	2.5	26.20	26.20		8.52	8.52		30.42	30.42		61.6	60.1		4.19	4.09		4.74	4.82		5	
25/5/2016	15:20	Fine	Middle	3.0	27.40	27.40	27.30	8.49	8.49	8.50	30.18	30.18	30.24	76.2	78.3	76.7	5.12	5.26	5.15	4.81	4.82	4.75	7	7.50
	15:22		Middle	3.0	27.20	27.20		8.50	8.50		30.29	30.29		76.4	76.0		5.13	5.09		4.68	4.68		8	

Remarks:  
Single underline denotes exceedance over Action Level.  
Double underline denotes exceedance over Limit Level.



**Water Monitoring Result at P5 - WCT / RT / IT  
Mid-Ebb Tide**

Date	Time	Weather Condition	Sampling Depth		Water Temperature		pH			Salinity		DO Saturation		DO		Turbidity		Suspended Solids						
					°C		-		ppt		%		mg/L		NTU		mg/L							
			m	Value	Average	Value	Average	Value	Average	Value	Average	Value	Average	Value	Average	Value	Average	Value	Average					
27/4/2016	16:16	Fine	Middle	3.5	23.70	23.70	23.70	8.51	8.51	8.52	28.77	28.77	28.87	69.4	68.1	67.6	4.97	4.88	4.85	6.74	6.75	6.71	5	5.00
	16:18		Middle	3.5	23.70	23.70		8.52	8.52		28.96	28.96		66.7	66.3		4.78	4.75		6.72	6.64		5	
29/4/2016	17:38	Fine	Middle	2.5	22.30	22.30	22.35	8.59	8.59	8.60	31.60	31.60	31.66	69.2	68.5	68.0	5.00	4.95	4.92	5.69	5.70	5.60	4	4.00
	17:40		Middle	2.5	22.40	22.40		8.60	8.60		31.72	31.72		67.6	66.8		4.88	4.83		5.50	5.50		4	
3/5/2016	10:36	Fine	Middle	3.5	24.30	24.30	24.15	8.51	8.51	8.52	30.55	30.55	30.78	70.7	68.6	67.5	4.99	4.84	4.76	7.49	7.38	7.48	3	3.00
	10:38		Middle	3.5	24.00	24.00		8.52	8.52		31.01	31.01		66.3	64.3		4.67	4.54		7.56	7.49		3	
5/5/2016	13:00	Fine	Middle	2.5	24.70	24.70	24.75	8.47	8.47	8.47	30.10	30.10	30.10	74.2	74.3	74.0	5.19	5.19	5.18	7.66	7.38	7.47	2	2.50
	13:02		Middle	2.5	24.80	24.80		8.47	8.47		30.09	30.09		74.0	73.6		5.18	5.16		7.36	7.48		3	
7/5/2016	13:57	Fine	Middle	2.5	26.10	26.10	26.10	8.44	8.44	8.44	29.63	29.63	29.66	63.4	64.0	62.7	4.35	4.38	4.28	10.08	10.07	10.08	6	5.50
	13:58		Middle	2.5	26.10	26.10		8.44	8.44		29.68	29.68		62.6	60.7		4.29	4.11		10.09	10.07		5	
9/5/2016	14:51	Fine	Middle	3.5	25.60	25.60	25.65	8.48	8.48	8.48	29.40	29.40	29.40	71.3	71.4	71.0	4.93	4.94	4.91	2.87	2.75	2.89	6	5.50
	14:53		Middle	3.5	25.70	25.70		8.48	8.48		29.40	29.40		71.0	70.1		4.91	4.85		2.96	2.98		5	
11/5/2016	16:35	Fine	Middle	2.5	24.80	24.80	24.75	8.49	8.49	8.49	29.53	29.53	29.55	61.7	60.3	60.4	4.34	4.23	4.24	2.20	2.20	2.20	3	3.50
	16:37		Middle	2.5	24.70	24.70		8.49	8.49		29.56	29.56		59.2	60.2		4.16	4.22		2.20	2.20		4	
13/5/2016	16:15	Fine	Middle	3.0	24.70	24.70	24.75	8.55	8.55	8.56	31.57	31.57	31.58	66.3	66.3	66.0	4.60	4.59	4.58	2.50	2.51	2.49	4	4.50
	16:17		Middle	3.0	24.80	24.80		8.56	8.56		31.59	31.59		65.1	66.3		4.52	4.59		2.45	2.49		5	
17/5/2016	-	Fine	Middle	-	-	-	#DIV/0!	-	-	#DIV/0!	-	-	#DIV/0!	-	-	#DIV/0!	-	-	#DIV/0!	-	-	#DIV/0!	-	#DIV/0!
	-		Middle	-	-	-		-	-		-	-		-	-		-	-		-	-		-	
19/5/2016	-	Fine	Middle	-	-	-	#DIV/0!	-	-	#DIV/0!	-	-	#DIV/0!	-	-	#DIV/0!	-	-	#DIV/0!	-	-	#DIV/0!	-	#DIV/0!
	-		Middle	-	-	-		-	-		-	-		-	-		-	-		-	-		-	
21/5/2016	14:02	Cloudy	Middle	3.5	25.60	25.60	25.60	8.53	8.53	8.54	30.38	30.38	30.53	67.7	66.9	66.2	4.65	4.60	4.55	3.64	3.58	3.57	4	3.50
	14:04		Middle	3.5	25.60	25.60		8.56	8.54		30.68	30.68		66.1	64.1		4.54	4.41		3.54	3.52		3	
23/5/2016	14:46	Fine	Middle	2.5	26.40	26.40	26.25	8.52	8.52	8.52	30.36	30.36	30.36	62.4	61.7	62.2	4.26	4.21	4.24	4.67	4.68	4.68	4	4.00
	14:48		Middle	2.5	26.10	26.10		8.52	8.52		30.36	30.36		61.7	62.8		4.21	4.29		4.68	4.68		4	
25/5/2016	15:25	Fine	Middle	3.0	27.10	27.10	27.05	8.50	8.50	8.51	30.05	30.05	30.17	72.0	74.5	73.9	4.84	5.01	4.97	5.22	5.32	5.33	5	4.00
	15:27		Middle	3.0	27.00	27.00		8.51	8.51		30.28	30.28		74.8	74.2		5.03	4.99		5.39	5.37		3	

Remarks:  
Single underline denotes exceedance over Action Level.  
Double underline denotes exceedance over Limit Level.



**Water Monitoring Result at RW21-P789 - Sun Hung Kai Centre  
Mid-Ebb Tide**

Date	Time	Weather Condition	Sampling Depth		Water Temperature		pH			Salinity		DO Saturation		DO		Turbidity		Suspended Solids						
					°C		-		ppt		%		mg/L		NTU		mg/L							
			m	Value	Average	Value	Average	Value	Average	Value	Average	Value	Average	Value	Average	Value	Average	Value	Average					
27/4/2016	14:23	Fine	Middle	3.5	24.30	24.30	24.45	8.29	8.29	8.33	29.63	29.63	29.61	62.2	61.4	62.1	4.40	4.34	4.39	7.36	7.36	7.35	5	5.00
	14:25		Middle	3.5	24.60	24.60		8.37	8.37		29.59	29.59		62.2	62.6		4.39	4.42		7.35	7.33		5	
29/4/2016	15:12	Fine	Middle	3.5	23.30	23.30	23.30	8.43	8.42	8.46	31.70	31.70	31.76	66.7	69.9	69.2	4.72	4.95	4.90	5.05	5.15	5.08	4	3.50
	15:14		Middle	3.5	23.30	23.30		8.49	8.49		31.82	31.82		70.5	69.5		5.00	4.93		5.07	5.05		3	
3/5/2016	10:45	Fine	Middle	3.5	23.70	23.70	23.75	8.47	8.47	8.49	31.38	31.38	31.37	63.3	63.5	63.6	4.47	4.49	4.49	6.06	6.08	6.28	3	3.00
	10:47		Middle	3.5	23.80	23.80		8.50	8.50		31.36	31.36		64.0	63.7		4.52	4.49		6.33	6.64		3	
5/5/2016	13:20	Fine	Middle	3.5	24.20	24.20	24.25	8.42	8.42	8.44	30.65	30.65	30.65	68.0	67.5	67.5	4.78	4.74	4.75	8.20	8.21	8.23	4	4.50
	13:22		Middle	3.5	24.30	24.30		8.45	8.45		30.65	30.66		67.5	67.1		4.74	4.72		8.25	8.26		5	
7/5/2016	11:30	Fine	Middle	3.5	25.10	25.10	25.15	8.39	8.39	8.41	30.51	30.51	30.51	59.1	58.5	57.9	4.10	4.05	4.02	8.73	8.72	8.72	7	6.50
	11:32		Middle	3.5	25.20	25.20		8.42	8.42		30.50	30.50		57.1	56.7		4.00	3.92		8.72	8.72		6	
9/5/2016	15:00	Fine	Middle	3.5	25.40	25.40	25.50	8.42	8.42	8.44	29.61	29.61	29.61	74.6	73.9	73.7	5.17	5.12	5.10	4.50	4.53	4.48	4	4.00
	15:02		Middle	3.5	25.60	25.60		8.45	8.45		29.60	29.60		73.9	72.3		5.11	5.00		4.54	4.33		4	
11/5/2016	16:52	Fine	Middle	3.5	24.80	24.80	24.75	8.41	8.41	8.43	29.61	29.61	29.62	63.5	64.3	63.2	4.45	4.51	4.43	2.75	2.70	2.76	3	2.50
	16:54		Middle	3.5	24.70	24.70		8.44	8.44		29.63	29.63		62.8	62.3		4.40	4.37		2.84	2.75		2	
13/5/2016	18:30	Fine	Middle	3.5	24.60	24.60	24.65	8.47	8.47	8.49	31.62	31.62	31.62	75.6	75.6	75.1	5.25	5.25	5.22	3.98	3.75	3.83	7	7.50
	18:32		Middle	3.5	24.70	24.70		8.50	8.50		31.62	31.62		75.1	74.2		5.21	5.15		3.80	3.79		8	
17/5/2016	14:24	Fine	Middle	3.5	24.90	24.90	24.95	8.44	8.44	8.49	31.95	31.95	31.95	69.0	68.0	67.2	4.76	4.69	4.64	4.23	4.15	4.11	7	6.00
	14:26		Middle	3.5	25.00	25.00		8.53	8.53		31.94	31.94		66.4	65.5		4.58	4.52		4.03	4.01		5	
19/5/2016	10:30	Fine	Middle	3.5	25.50	25.50	25.60	8.22	8.22	8.29	32.27	32.27	32.23	63.7	62.7	62.1	4.34	4.27	4.23	3.66	3.70	3.74	4	4.00
	10:32		Middle	3.5	25.70	25.70		8.35	8.35		32.19	32.19		61.4	60.7		4.18	4.13		3.83	3.77		4	
21/5/2016	11:34	Cloudy	Middle	3.5	25.20	25.20	25.25	8.41	8.41	8.45	31.62	31.62	31.61	61.2	61.6	61.6	4.21	4.43	4.29	4.00	4.01	3.94	8	8.00
	11:36		Middle	3.5	25.30	25.30		8.49	8.49		31.59	31.59		62.1	61.6		4.27	4.24		3.87	3.87		8	
23/5/2016	10:53	Fine	Middle	3.5	25.90	25.90	25.95	8.45	8.45	8.47	31.32	31.32	31.29	57.1	57.7	57.0	3.89	3.93	3.88	4.82	4.68	4.78	4	4.00
	10:55		Middle	3.5	26.00	26.00		8.48	8.48		31.26	31.26		57.0	56.1		3.88	3.82		4.81	4.81		4	
25/5/2016	15:40	Fine	Middle	3.5	27.10	27.10	27.20	8.41	8.41	8.43	30.61	30.61	30.61	71.4	71.1	71.3	4.78	4.76	4.77	4.21	4.21	4.22	4	4.00
	15:42		Middle	3.5	27.30	27.30		8.44	8.44		30.61	30.61		70.9	71.9		4.74	4.81		4.21	4.26		4	

Remarks:  
Single underline denotes exceedance over Action Level.  
Double underline denotes exceedance over Limit Level.



**Water Monitoring Result at WSD19 - Sheung Wan  
Mid-Ebb Tide**

Date	Time	Weater Condition	Sampling Depth		Water Temperature		pH			Salinity		DO Saturation		DO		Turbidity		Suspended Solids						
					°C		-		ppt		%		mg/L		NTU		mg/L							
			m	Value	Average	Value	Average	Value	Average	Value	Average	Value	Average	Value	Average	Value	Average	Value	Average					
27/4/2016	15:13	Fine	Middle	3.5	23.90	23.90	24.00	8.23	8.23	8.29	28.46	28.46	28.42	65.8	66.4	67.5	4.71	4.76	4.83	5.79	5.78	5.77	4	4.00
	15:15		Middle	3.5	24.10	24.10		8.35	8.35		28.37	28.37		68.8	69.1		4.92	4.94		5.75	5.76		4	
29/4/2016	16:31	Fine	Middle	3.5	22.70	22.70	22.80	8.34	8.34	8.39	31.24	31.24	31.19	68.1	65.0	66.8	4.90	4.68	4.80	8.41	8.30	8.35	4	4.00
	16:33		Middle	3.5	22.90	22.90		8.44	8.44		31.14	31.15		66.9	67.0		4.81	4.81		8.27	8.40		4	
3/5/2016	9:20	Fine	Middle	3.5	24.00	24.00	24.15	8.21	8.21	8.29	30.92	30.92	30.92	80.9	80.3	79.9	5.69	5.64	5.61	6.40	6.37	6.33	3	3.50
	9:22		Middle	3.5	24.30	24.30		8.37	8.37		30.91	30.91		80.3	78.2		5.64	5.48		6.27	6.27		4	
5/5/2016	11:50	Fine	Middle	3.5	25.50	25.50	25.75	8.25	8.25	8.31	29.81	29.81	29.81	82.3	82.4	81.5	5.66	5.67	5.60	12.07	12.06	<u>12.15</u>	9	9.00
	11:52		Middle	3.5	26.00	26.00		8.37	8.37		29.80	29.80		81.1	80.3		5.57	5.51		12.21	12.26		9	
7/5/2016	10:53	Fine	Middle	3.5	25.50	25.50	25.60	8.28	8.28	8.33	29.65	29.65	29.60	69.7	70.9	70.4	4.83	4.90	4.85	10.67	10.55	<u>10.58</u>	4	4.00
	10:55		Middle	3.5	25.70	25.70		8.38	8.38		29.54	29.54		71.5	69.4		4.95	4.73		10.55	10.53		4	
9/5/2016	13:37	Fine	Middle	3.5	26.20	26.20	26.40	8.36	8.36	8.38	28.91	28.91	28.90	74.5	74.3	72.6	5.10	5.09	4.99	12.82	12.81	<u>12.74</u>	9	9.00
	13:39		Middle	3.5	26.60	26.60		8.40	8.40		28.89	28.89		72.1	69.5		4.93	4.85		12.75	12.58		9	
11/5/2016	15:21	Fine	Middle	3.5	25.20	25.20	25.30	8.32	8.32	8.37	28.99	28.99	28.99	66.1	65.2	65.2	4.60	4.54	4.54	3.74	3.73	3.73	4	4.00
	15:23		Middle	3.5	25.40	25.40		8.41	8.41		28.98	28.98		65.6	64.0		4.56	4.45		3.72	3.72		4	
13/5/2016	15:10	Fine	Middle	3.5	25.40	25.40	25.50	8.33	8.33	8.37	30.83	30.83	30.84	74.6	75.0	73.0	5.14	5.02	4.99	2.53	2.51	2.52	3	3.50
	15:12		Middle	3.5	25.60	25.60		8.41	8.41		30.84	30.84		70.5	71.7		4.85	4.93		2.51	2.52		4	
17/5/2016	-	Fine	Middle	-	-	-	#DIV/0!	-	-	#DIV/0!	-	-	#DIV/0!	-	-	#DIV/0!	-	-	#DIV/0!	-	-	#DIV/0!	-	#DIV/0!
	-		Middle	-	-	-	-	-	-	-	-	-	-	-	-	-	-	-	-	-	-	-	-	-
19/5/2016	-	Fine	Middle	-	-	-	#DIV/0!	-	-	#DIV/0!	-	-	#DIV/0!	-	-	#DIV/0!	-	-	#DIV/0!	-	-	#DIV/0!	-	#DIV/0!
	-		Middle	-	-	-	-	-	-	-	-	-	-	-	-	-	-	-	-	-	-	-	-	-
21/5/2016	10:40	Cloudy	Middle	3.5	25.40	25.40	25.40	8.38	8.38	8.42	31.74	31.74	31.74	56.9	58.4	58.6	3.90	4.00	4.02	9.97	9.96	9.95	15	15.50
	10:42		Middle	3.5	25.40	25.40		8.46	8.46		31.73	31.73		59.1	60.1		4.05	4.12		9.93	9.95		16	
23/5/2016	10:16	Fine	Middle	3.5	26.10	26.10	26.10	8.68	8.67	8.65	31.33	31.33	31.31	66.9	64.6	65.2	4.54	4.39	4.43	7.07	7.06	7.00	6	6.00
	10:18		Middle	3.5	26.10	26.10		8.62	8.62		31.29	31.29		64.5	64.9		4.38	4.40		7.02	6.84		6	
25/5/2016	11:05	Fine	Middle	4.0	27.00	27.00	27.10	8.35	8.35	8.38	30.97	30.97	30.97	77.8	77.9	77.9	5.20	5.20	5.20	7.08	7.33	7.30	8	8.00
	11:07		Middle	4.0	27.20	27.20		8.40	8.40		30.97	30.97		77.8	78.0		5.20	5.21		7.42	7.37		8	

Remarks:  
Single underline denotes exceedance over Action Level.  
Double underline denotes exceedance over Limit Level.





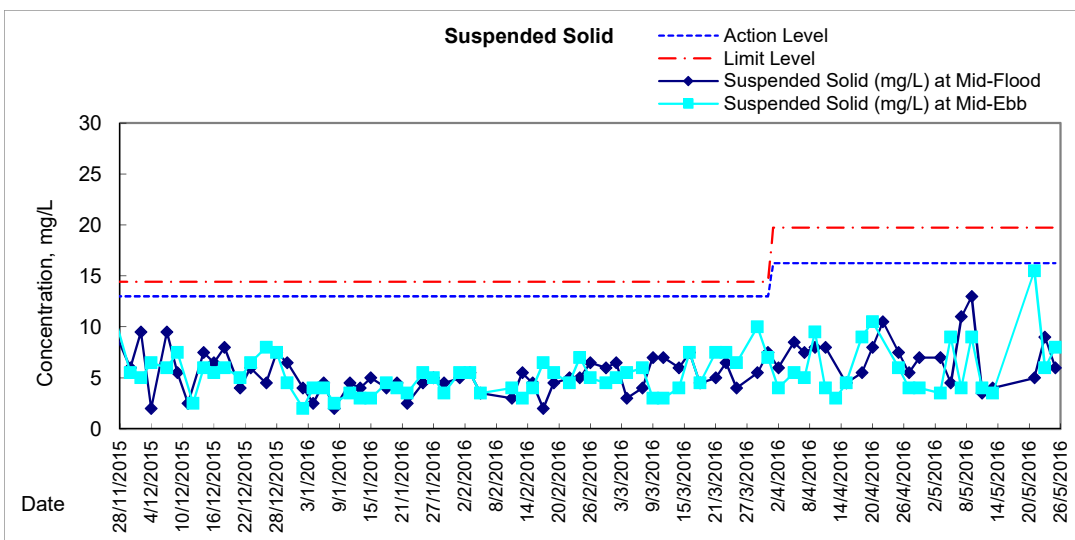
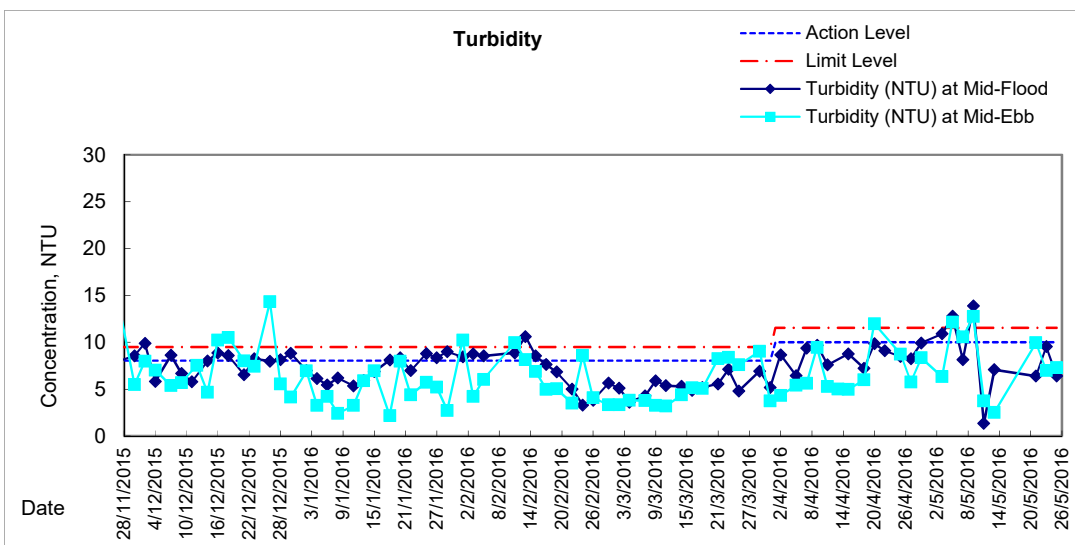
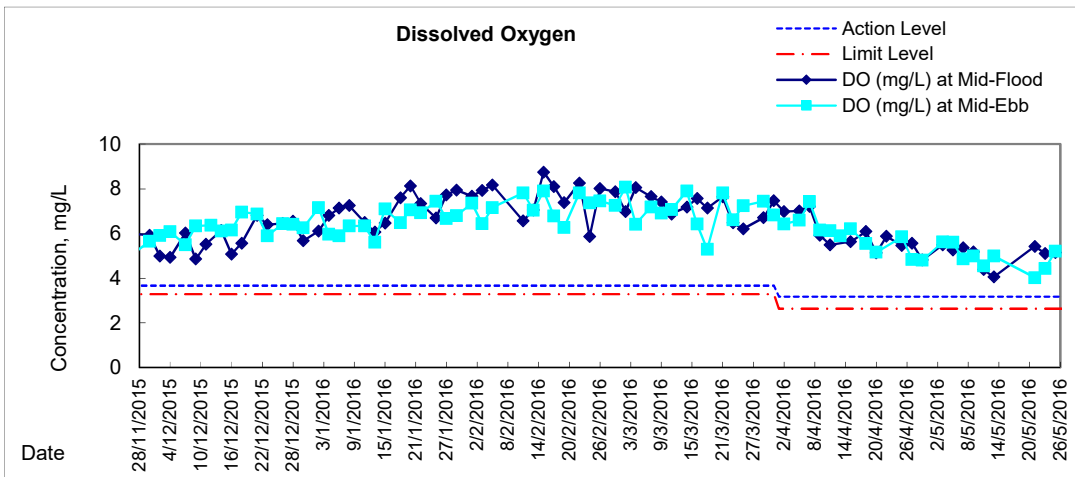
**Water Monitoring Result at C7 - Windsor House**  
**Additional monitoring**

Date	Time	Weater Condition	Sampling Depth		Water Temperature			pH			Salinity			DO Saturation		DO		Turbidity		Suspended Solids				
					°C			-			ppt			%		mg/L		NTU		mg/L				
					Value	Average		Value	Average		Value	Average		Value	Average		Value	Average	Value	Average	Value	Average		
30/4/2016	9:05	Fine	Middle	-	22.40	22.40	22.40	8.43	8.43	8.46	31.70	31.70	31.70	71.0	70.7	70.5	5.13	5.10	5.08	6.52	6.51	6.49	<2	<2
	9:07		Middle	-	22.40	22.40		8.48	8.48		31.70	31.70		70.5	69.6		5.05	5.02		6.47	6.44			

Remarks:  
 Single underline denotes exceedance over Action Level.  
 Double underline denotes exceedance over Limit Level.

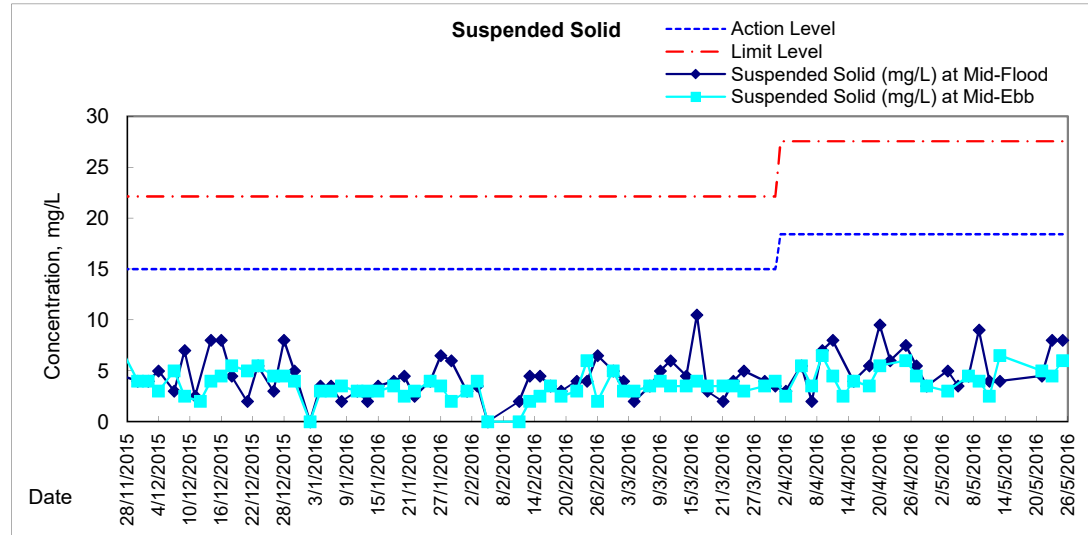
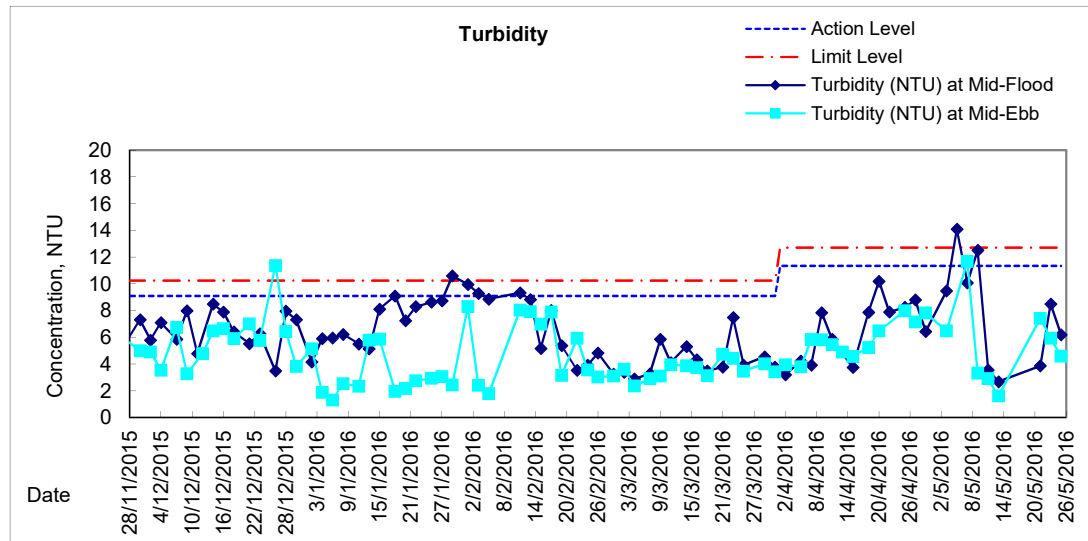
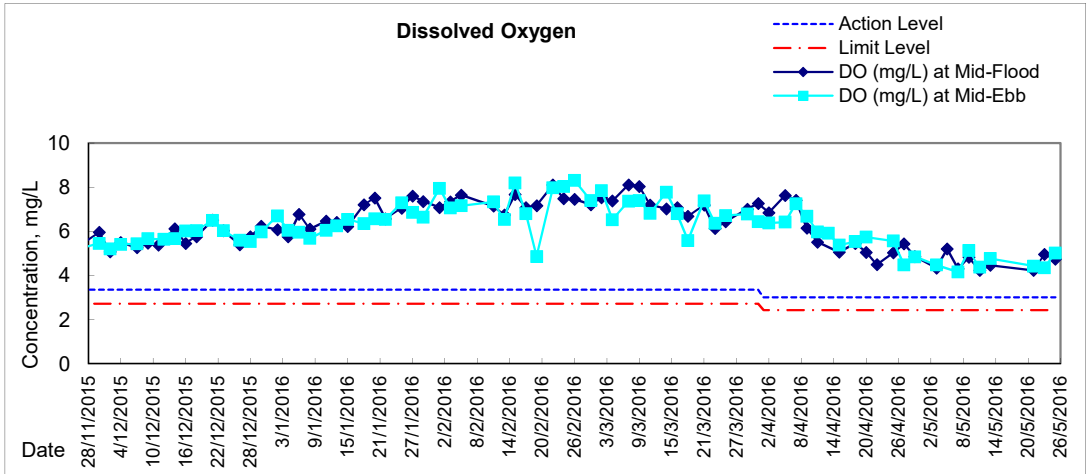


# Graphic Presentation of Water Quality Result of WSD19 - Sheung Wan



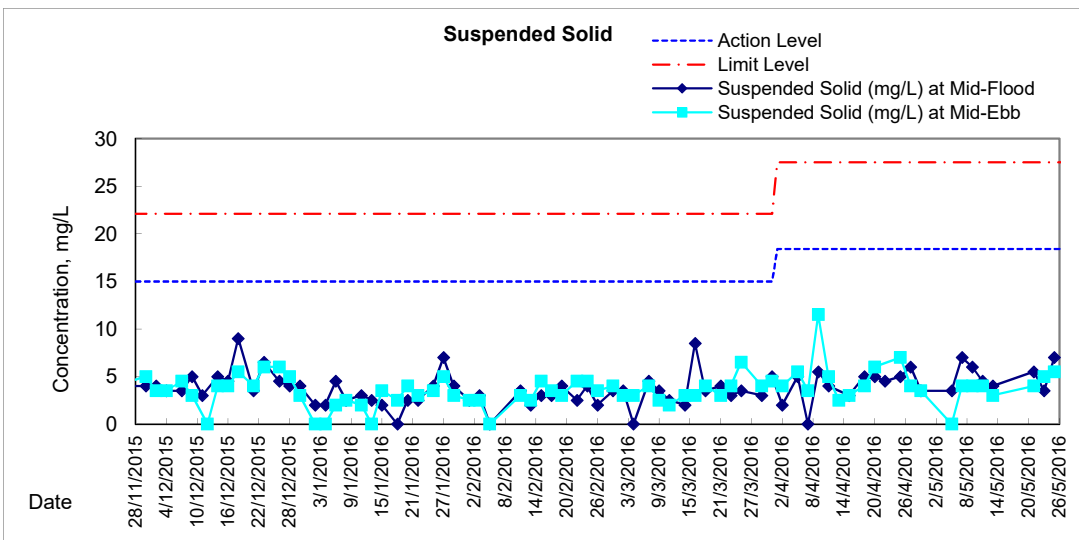
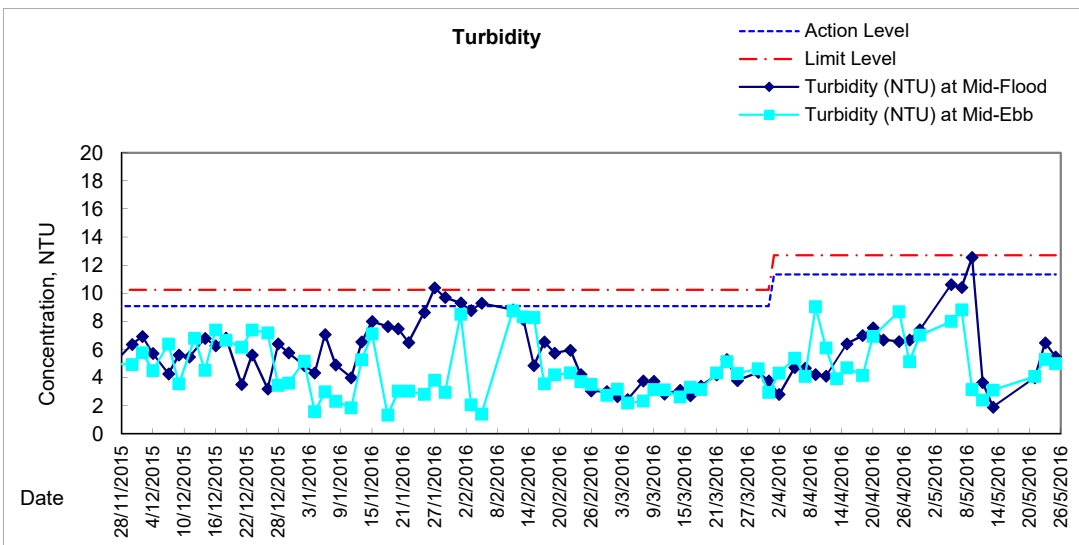
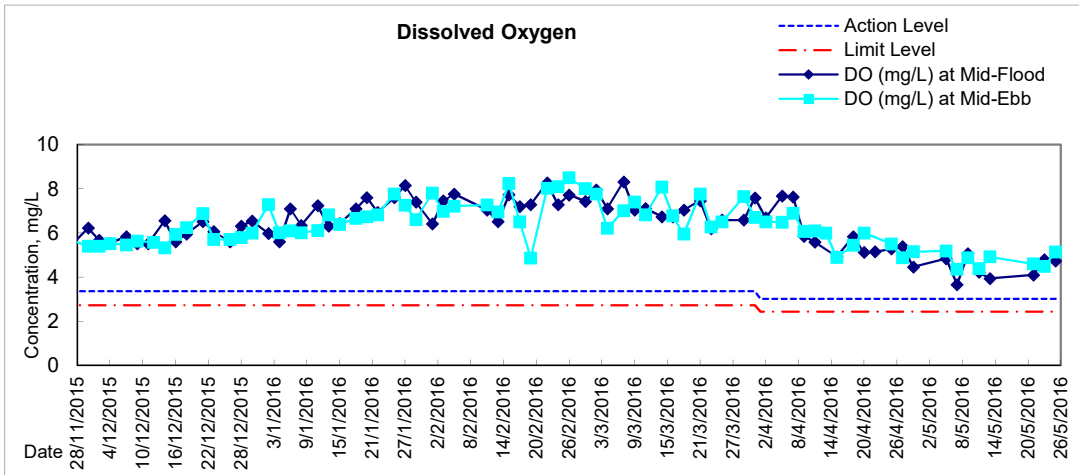


### Graphic Presentation of Water Quality Result of C1 - HKCEC



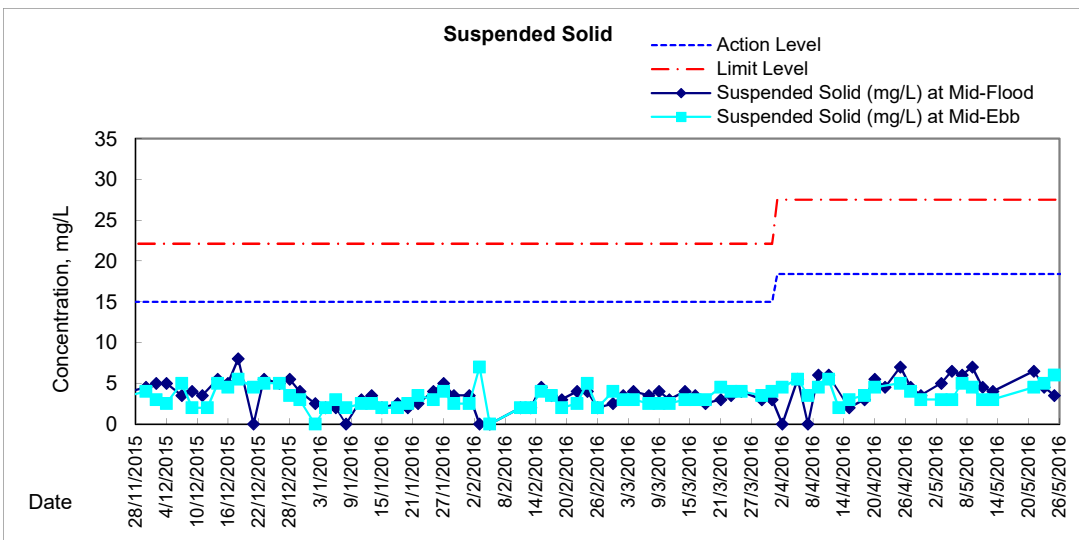
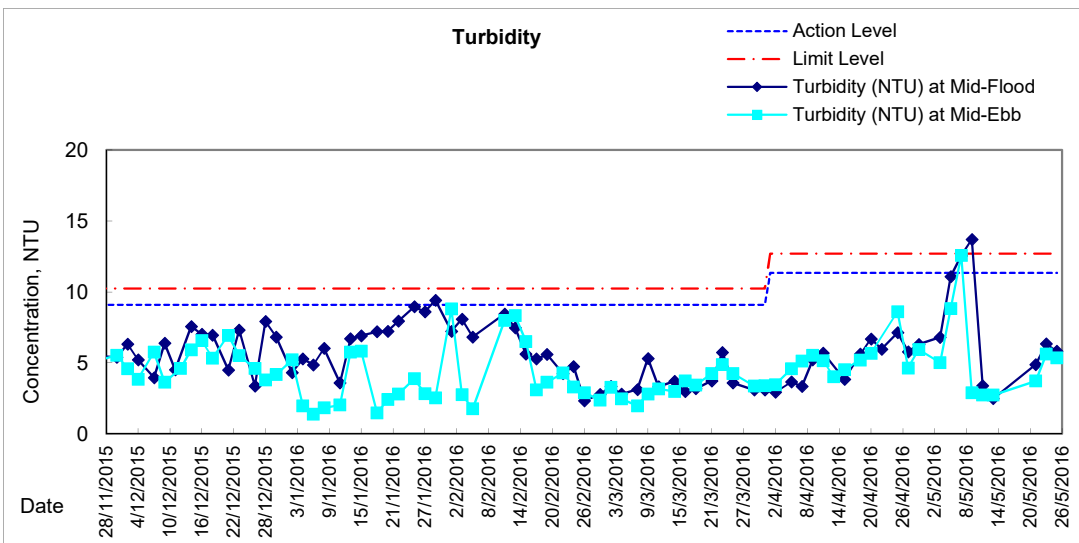
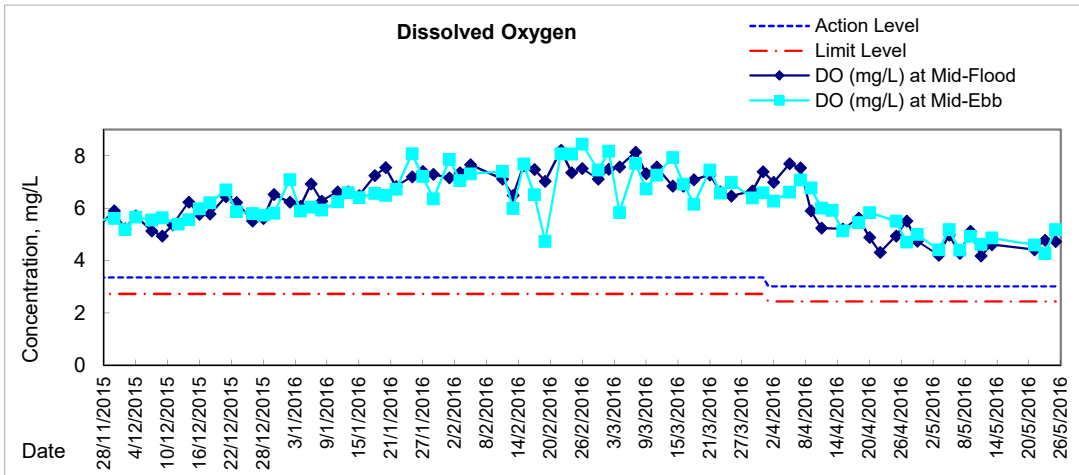


# Graphic Presentation of Water Quality Result of P1 - HKCEC Phase I



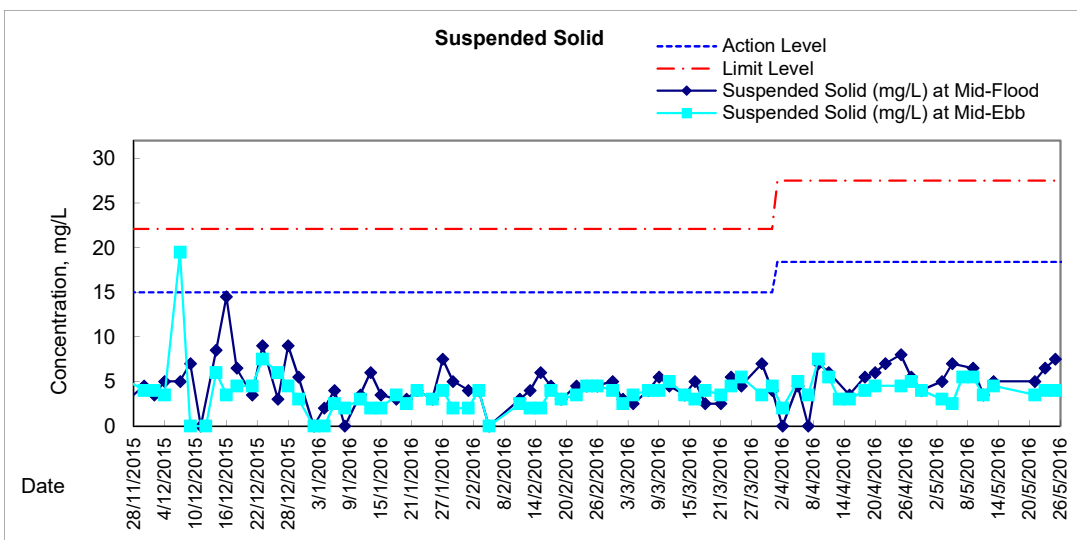
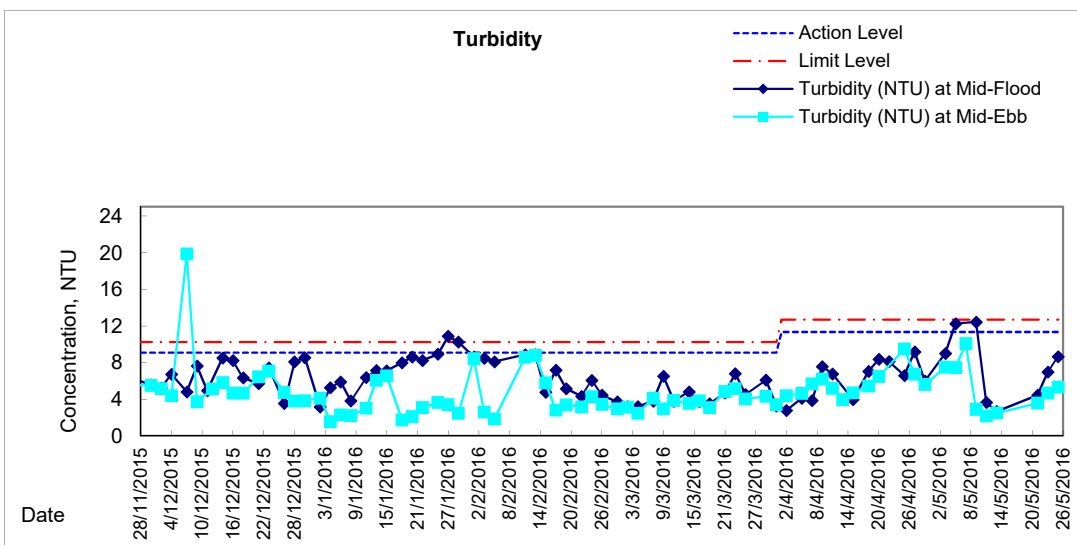
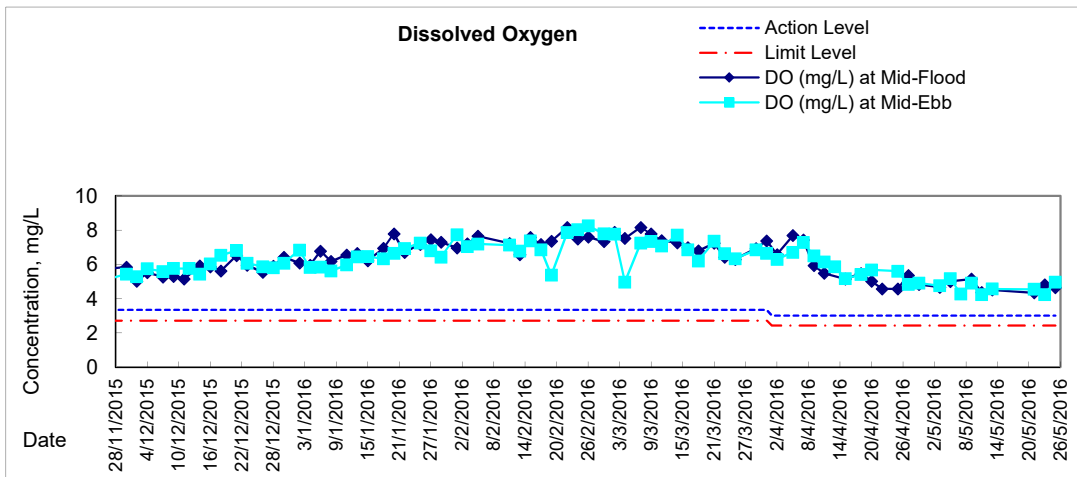


# Graphic Presentation of Water Quality Result of P3 - APA



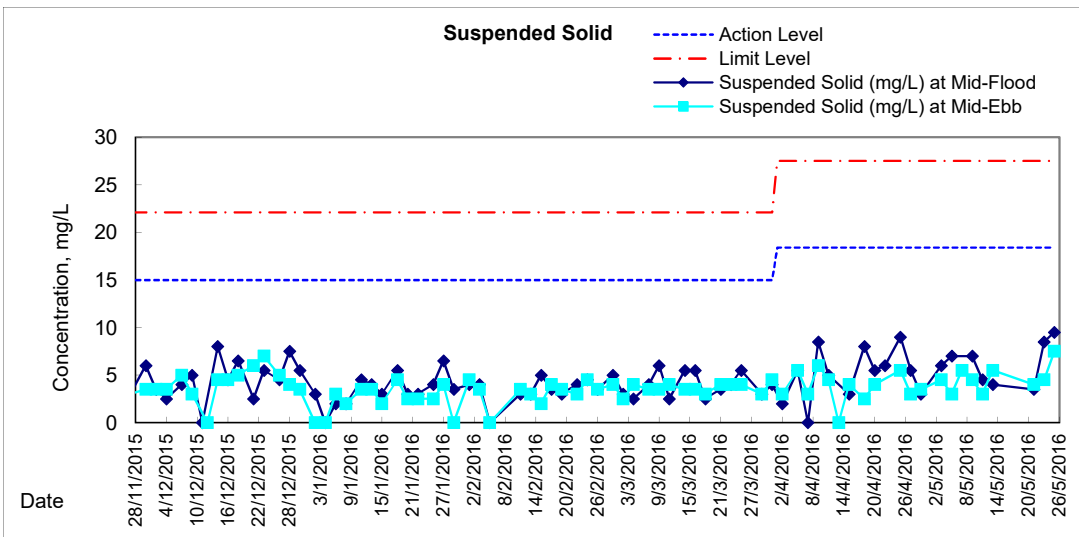
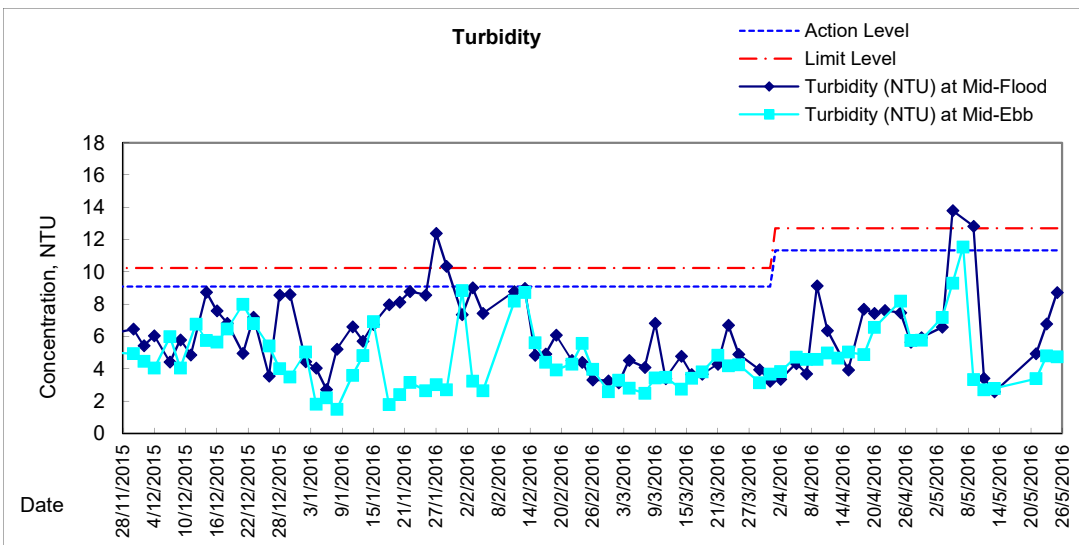
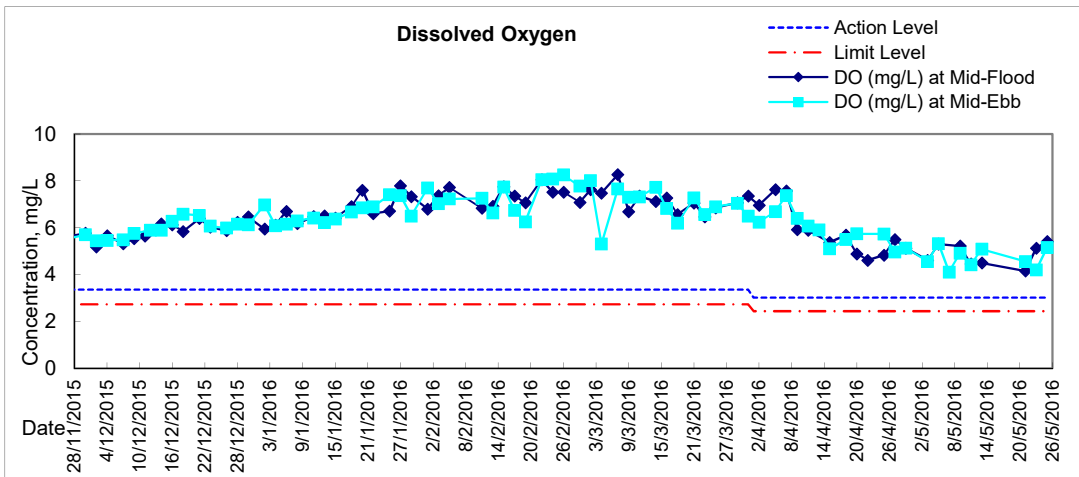


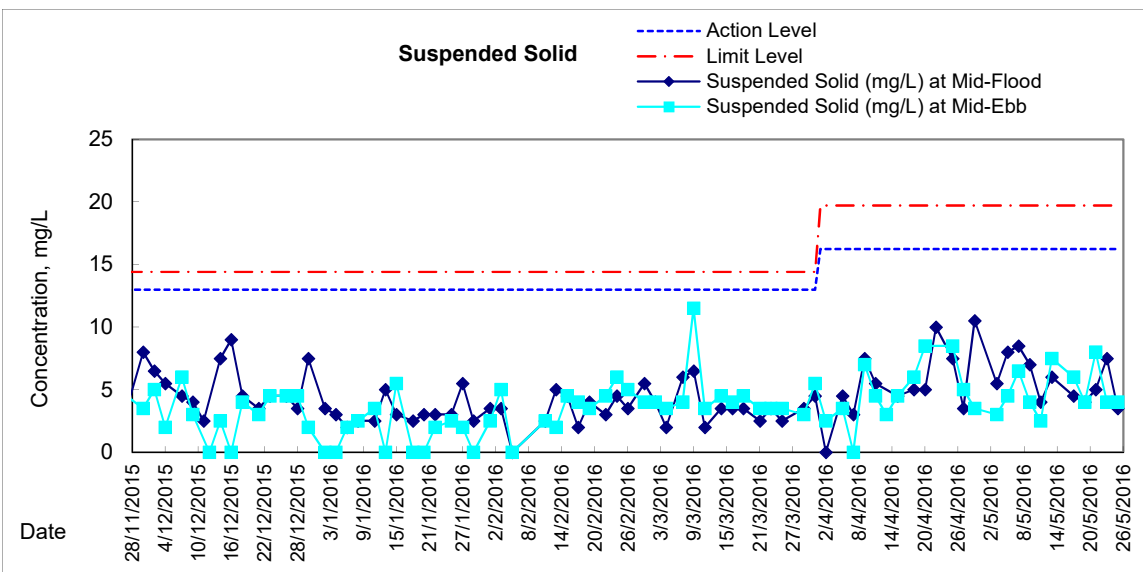
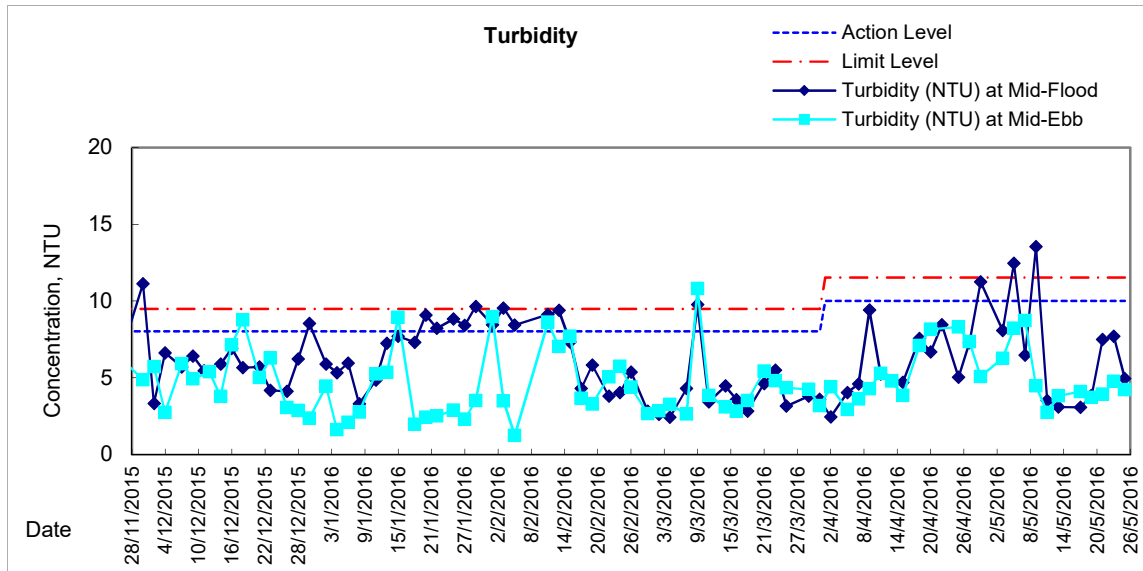
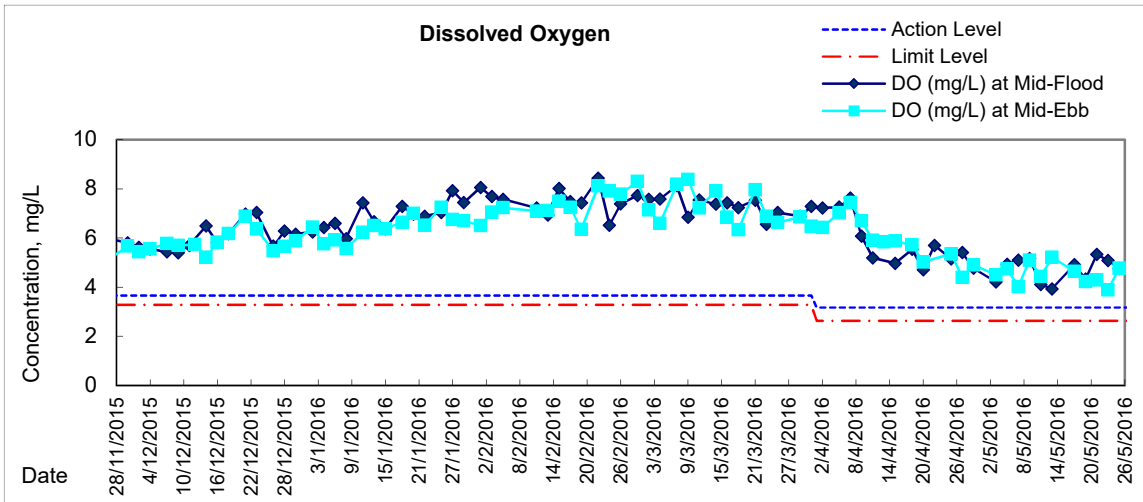
# Graphic Presentation of Water Quality Result of P5 - WCT / RT / IT





### Graphic Presentation of Water Quality Result of P4 - SOC

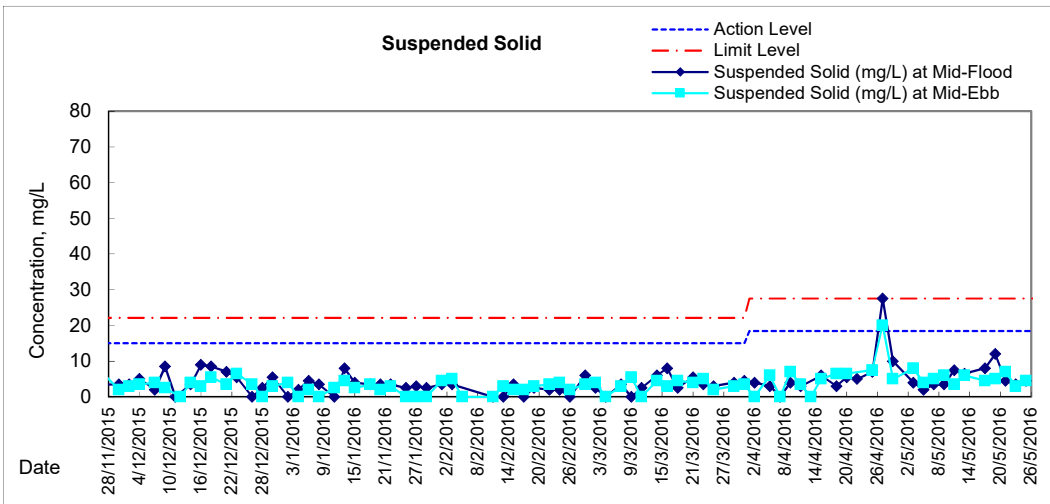
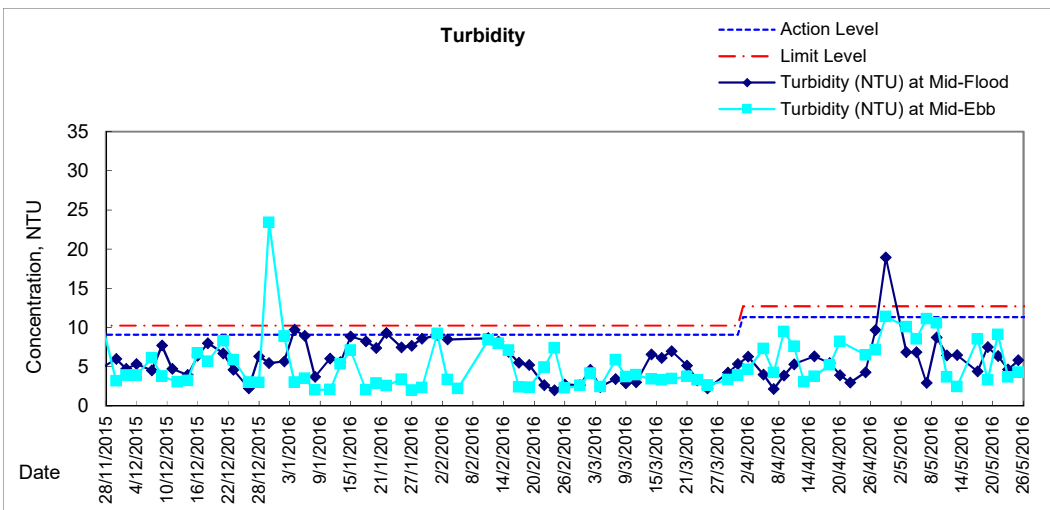
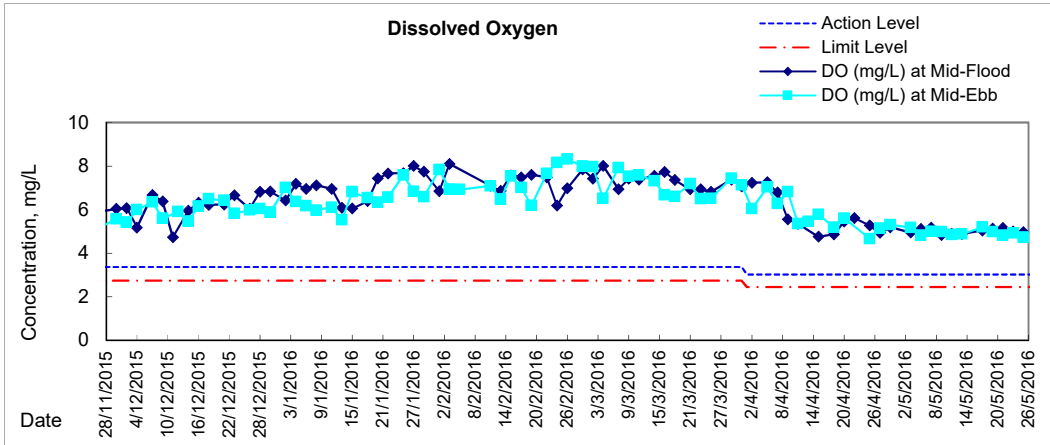








### Graphic Presentation of Water Quality Result of C7 - Windsor House





**Water Monitoring Result at C6 - Excelsior Hotel  
Mid-Flood Tide**

Date	Time	Weather Condition	Sampling Depth		Water Temperature			pH			Salinity		DO Saturation		DO				
					°C			-			ppt		%		mg/L				
			m	Value	Average	Value	Average	Value	Average	Value	Average	Value	Average	Value	Average				
27/4/2016	-	Cloudy	Surface	-	-	-	-	-	-	-	-	-	-	-	-	-	-	-	
	10:30		Middle	1.5	23.40	23.40	23.4	8.49	8.49	8.5	22.27	22.27	22.3	70.5	70.8	70.7	5.27	5.30	5.29
	-		Bottom	-	-	-	-	-	-	-	-	-	-	-	-	-	-	-	-
29/4/2016	10:57	Fine	Surface	1.0	23.10	23.10	23.1	8.52	8.52	8.5	29.29	29.29	29.3	71.4	71.4	71.4	5.16	5.16	5.16
	-		Middle	2.0	-	-	-	-	-	-	-	-	-	-	-	-	-	-	-
	10:59		Bottom	3.0	22.80	22.80	22.8	8.49	8.49	8.5	30.02	30.02	30.0	74.7	75.4	75.1	5.40	5.46	5.43
3/5/2016	-	Fine	Surface	-	-	-	-	-	-	-	-	-	-	-	-	-	-	-	-
	14:55		Middle	1.5	24.80	24.80	24.8	8.44	8.44	8.4	28.59	28.59	28.6	62.0	62.5	62.3	4.37	4.40	4.39
	-		Bottom	-	-	-	-	-	-	-	-	-	-	-	-	-	-	-	-
5/5/2016	-	Fine	Surface	-	-	-	-	-	-	-	-	-	-	-	-	-	-	-	-
	17:00		Middle	1.5	24.60	24.60	24.6	8.42	8.42	8.4	29.84	29.84	29.8	62.7	62.5	62.6	4.37	4.36	4.37
	-		Bottom	-	-	-	-	-	-	-	-	-	-	-	-	-	-	-	-
7/5/2016	-	Cloudy	Surface	-	-	-	-	-	-	-	-	-	-	-	-	-	-	-	-
	17:00		Middle	1.0	26.50	26.50	26.5	8.32	8.32	8.3	27.93	27.93	27.9	57.7	58.4	58.1	3.95	4.00	3.98
	-		Bottom	-	-	-	-	-	-	-	-	-	-	-	-	-	-	-	-
9/5/2016	9:58	Fine	Surface	1.0	25.50	25.50	25.5	8.31	8.31	8.3	29.36	29.36	29.4	67.2	65.4	66.3	4.63	4.52	4.58
	-		Middle	2.0	-	-	-	-	-	-	-	-	-	-	-	-	-	-	-
	10:00		Bottom	3.0	25.30	25.30	25.3	8.37	8.37	8.4	29.73	29.73	29.7	64.3	65.2	64.8	4.46	4.51	4.49
11/5/2016	12:05	Fine	Surface	1.0	25.10	25.10	25.1	8.44	8.44	8.4	28.18	28.18	28.2	65.0	64.7	64.9	4.56	4.54	4.55
	-		Middle	2.0	-	-	-	-	-	-	-	-	-	-	-	-	-	-	-
	12:07		Bottom	3.0	24.90	24.90	24.9	8.43	8.43	8.4	28.87	28.87	28.9	71.8	72.0	71.9	5.06	5.07	5.07
13/5/2016	11:40	Fine	Surface	1.0	24.80	24.80	24.8	8.35	8.35	8.4	29.64	29.64	29.6	73.1	72.7	72.9	5.12	5.09	5.11
	-		Middle	2.0	-	-	-	-	-	-	-	-	-	-	-	-	-	-	-
	11:42		Bottom	3.0	24.80	24.80	24.8	8.39	8.39	8.4	30.38	30.38	30.4	73.1	73.2	73.2	5.12	5.13	5.13
17/5/2016	10:40	Cloudy	Surface	1.0	24.60	24.60	24.6	8.54	8.54	8.5	30.56	30.56	30.6	67.1	66.7	66.9	4.70	4.67	4.69
	-		Middle	2.0	-	-	-	-	-	-	-	-	-	-	-	-	-	-	-
	10:42		Bottom	3.0	24.50	24.50	24.5	8.53	8.53	8.5	30.72	30.72	30.7	71.4	71.6	71.5	4.99	5.00	5.00
19/5/2016	17:00	Fine	Surface	1.0	25.40	25.40	25.4	8.49	8.49	8.5	30.48	30.48	30.5	66.4	67.2	66.8	4.58	4.64	4.61
	-		Middle	2.0	-	-	-	-	-	-	-	-	-	-	-	-	-	-	-
	17:22		Bottom	3.0	25.30	25.30	25.3	8.49	8.49	8.5	31.16	31.16	31.2	72.0	72.3	72.2	4.96	4.99	4.98
21/5/2016	-	Cloudy	Surface	-	-	-	-	-	-	-	-	-	-	-	-	-	-	-	-
	17:40		Middle	1.0	26.10	26.10	26.1	8.46	8.46	8.5	29.53	29.53	29.5	69.0	69.9	69.5	4.75	4.79	4.77
	-		Bottom	-	-	-	-	-	-	-	-	-	-	-	-	-	-	-	-
23/5/2016	-	Cloudy	Surface	-	-	-	-	-	-	-	-	-	-	-	-	-	-	-	-
	18:05		Middle	1.0	26.30	26.30	26.3	8.39	8.39	8.4	29.15	29.15	29.2	65.3	65.5	65.4	4.47	4.48	4.48
	-		Bottom	-	-	-	-	-	-	-	-	-	-	-	-	-	-	-	-
25/5/2016	-	Cloudy	Surface	-	-	-	-	-	-	-	-	-	-	-	-	-	-	-	-
	22:30		Middle	1.5	27.00	27.00	27.0	8.32	8.32	8.3	28.11	28.12	28.1	58.0	59.5	58.8	3.95	4.05	4.00
	-		Bottom	-	-	-	-	-	-	-	-	-	-	-	-	-	-	-	-

Remarks:  
Single underline denotes exceedance over Action Level.  
Double underline denotes exceedance over Limit Level.



**Water Monitoring Result at Ex-WPCWA SW - South-western corners of ex-Public Cargo Works Area  
Mid-Flood Tide**

Date	Time	Weather Condition	Sampling Depth		Water Temperature			pH			Salinity			DO Saturation			DO		
					°C			-			ppt			%			mg/L		
			m	Value	Average	Value	Average	Value	Average	Value	Average	Value	Average	Value	Average	Value	Average		
27/4/2016	-	Cloudy	Surface	-	-	-	-	-	-	-	-	-	-	-	-	-	-	-	-
	10:10		Middle	1.5	23.90	23.90	23.9	8.68	8.68	8.7	13.58	13.58	13.6	68.6	66.8	67.7	5.37	5.22	5.30
	-		Bottom	-	-	-	-	-	-	-	-	-	-	-	-	-	-	-	-
29/4/2016	-	Fine	Surface	-	-	-	-	-	-	-	-	-	-	-	-	-	-	-	-
	8:50		Middle	1.5	22.80	22.80	22.8	8.23	8.23	8.2	30.09	30.09	30.1	70.8	70.7	70.8	5.11	5.09	5.10
	-		Bottom	-	-	-	-	-	-	-	-	-	-	-	-	-	-	-	-
3/5/2016	-	Fine	Surface	-	-	-	-	-	-	-	-	-	-	-	-	-	-	-	-
	14:38		Middle	1.0	24.20	24.20	24.2	8.47	8.47	8.5	29.12	29.12	29.1	54.2	55.7	55.0	3.84	3.94	3.89
	-		Bottom	-	-	-	-	-	-	-	-	-	-	-	-	-	-	-	-
5/5/2016	-	Fine	Surface	-	-	-	-	-	-	-	-	-	-	-	-	-	-	-	-
	16:35		Middle	1.5	24.30	24.30	24.3	8.40	8.40	8.4	28.31	28.31	28.3	52.6	53.0	52.8	3.74	3.77	3.76
	-		Bottom	-	-	-	-	-	-	-	-	-	-	-	-	-	-	-	-
7/5/2016	-	Cloudy	Surface	-	-	-	-	-	-	-	-	-	-	-	-	-	-	-	-
	17:45		Middle	1.0	26.40	26.40	26.4	8.46	8.46	8.5	22.26	22.26	22.3	59.5	59.9	59.7	4.08	4.10	4.09
	-		Bottom	-	-	-	-	-	-	-	-	-	-	-	-	-	-	-	-
9/5/2016	-	Fine	Surface	-	-	-	-	-	-	-	-	-	-	-	-	-	-	-	-
	9:25		Middle	1.5	24.90	24.90	24.9	8.20	8.32	8.3	29.01	29.01	29.0	64.7	64.4	64.6	4.52	4.50	4.51
	-		Bottom	-	-	-	-	-	-	-	-	-	-	-	-	-	-	-	-
11/5/2016	-	Fine	Surface	-	-	-	-	-	-	-	-	-	-	-	-	-	-	-	-
	11:45		Middle	1.5	24.70	24.70	24.7	8.40	8.40	8.4	26.02	26.02	26.0	56.3	55.5	55.9	4.03	3.95	3.99
	-		Bottom	-	-	-	-	-	-	-	-	-	-	-	-	-	-	-	-
13/5/2016	-	Fine	Surface	-	-	-	-	-	-	-	-	-	-	-	-	-	-	-	-
	11:25		Middle	1.0	24.50	24.50	24.5	8.56	8.56	8.6	25.33	25.33	25.3	49.0	47.5	48.3	3.54	3.43	3.49
	-		Bottom	-	-	-	-	-	-	-	-	-	-	-	-	-	-	-	-
17/5/2016	-	Cloudy	Surface	-	-	-	-	-	-	-	-	-	-	-	-	-	-	-	-
	10:02		Middle	1.0	24.60	24.60	24.6	8.46	8.46	8.5	28.23	28.23	28.2	50.0	49.7	49.9	3.54	3.52	3.53
	-		Bottom	-	-	-	-	-	-	-	-	-	-	-	-	-	-	-	-
19/5/2016	-	Fine	Surface	-	-	-	-	-	-	-	-	-	-	-	-	-	-	-	-
	16:29		Middle	1.0	25.30	25.30	25.3	8.55	8.55	8.6	29.63	29.63	29.6	56.4	56.5	56.5	3.42	3.92	3.67
	-		Bottom	-	-	-	-	-	-	-	-	-	-	-	-	-	-	-	-
21/5/2016	-	Cloudy	Surface	-	-	-	-	-	-	-	-	-	-	-	-	-	-	-	-
	18:17		Middle	1.0	26.10	26.10	26.1	8.56	8.55	8.6	24.02	24.03	24.0	52.3	52.6	52.5	3.69	3.72	3.71
	-		Bottom	-	-	-	-	-	-	-	-	-	-	-	-	-	-	-	-
23/5/2016	-	Cloudy	Surface	-	-	-	-	-	-	-	-	-	-	-	-	-	-	-	-
	18:45		Middle	1.0	26.10	26.10	26.1	8.50	8.50	8.5	21.97	21.97	22.0	52.0	52.3	52.2	3.70	3.72	3.71
	-		Bottom	-	-	-	-	-	-	-	-	-	-	-	-	-	-	-	-
25/5/2016	-	Cloudy	Surface	-	-	-	-	-	-	-	-	-	-	-	-	-	-	-	-
	22:00		Middle	1.5	26.70	26.70	26.7	8.43	8.43	8.4	22.46	22.46	22.5	53.1	56.1	54.6	3.79	4.01	3.90
	-		Bottom	-	-	-	-	-	-	-	-	-	-	-	-	-	-	-	-

Remarks:  
Single underline denotes exceedance over Action Level.  
Double underline denotes exceedance over Limit Level.



**Water Monitoring Result at Ex-WPCWA SE - South-eastern corners of ex-Public Cargo Works Area  
Mid-Flood Tide**

Date	Time	Weather Condition	Sampling Depth		Water Temperature			pH		Salinity		DO Saturation		DO					
					°C			-		ppt		%		mg/L					
			m	Value	Average	Value	Average	Value	Average	Value	Average	Value	Average	Value	Average				
27/4/2016	-	Cloudy	Surface	-	-	-	-	-	-	-	-	-	-	-	-	-	-	-	
	-		Middle	0.0	-	-	-	-	-	-	-	-	-	-	-	-	-	-	-
	-		Bottom	-	-	-	-	-	-	-	-	-	-	-	-	-	-	-	-
29/4/2016	-	Fine	Surface	-	-	-	-	-	-	-	-	-	-	-	-	-	-	-	-
	-		Middle	0.0	-	-	-	-	-	-	-	-	-	-	-	-	-	-	-
	-		Bottom	-	-	-	-	-	-	-	-	-	-	-	-	-	-	-	-
3/5/2016	-	Fine	Surface	-	-	-	-	-	-	-	-	-	-	-	-	-	-	-	-
	-		Middle	0.0	-	-	-	-	-	-	-	-	-	-	-	-	-	-	-
	-		Bottom	-	-	-	-	-	-	-	-	-	-	-	-	-	-	-	-
5/5/2016	-	Fine	Surface	-	-	-	-	-	-	-	-	-	-	-	-	-	-	-	-
	-		Middle	0.0	-	-	-	-	-	-	-	-	-	-	-	-	-	-	-
	-		Bottom	-	-	-	-	-	-	-	-	-	-	-	-	-	-	-	-
7/5/2016	-	Cloudy	Surface	-	-	-	-	-	-	-	-	-	-	-	-	-	-	-	-
	-		Middle	0.0	-	-	-	-	-	-	-	-	-	-	-	-	-	-	-
	-		Bottom	-	-	-	-	-	-	-	-	-	-	-	-	-	-	-	-
9/5/2016	-	Fine	Surface	-	-	-	-	-	-	-	-	-	-	-	-	-	-	-	-
	-		Middle	0.0	-	-	-	-	-	-	-	-	-	-	-	-	-	-	-
	-		Bottom	-	-	-	-	-	-	-	-	-	-	-	-	-	-	-	-
11/5/2016	-	Fine	Surface	-	-	-	-	-	-	-	-	-	-	-	-	-	-	-	-
	11:47		Middle	1.5	24.50	24.50	24.5	8.39	8.39	8.4	28.53	28.53	28.5	63.7	64.5	64.1	4.51	4.57	4.54
	-		Bottom	-	-	-	-	-	-	-	-	-	-	-	-	-	-	-	-
13/5/2016	11:20	Fine	Surface	1.0	24.50	24.50	24.5	8.57	8.57	8.6	31.27	31.27	31.3	68.0	69.1	68.6	4.73	4.81	4.77
	-		Middle	2.5	-	-	-	-	-	-	-	-	-	-	-	-	-	-	-
	11:22		Bottom	4.0	24.40	24.40	24.4	8.52	8.52	8.5	30.77	30.77	30.8	64.4	64.3	64.4	4.51	4.50	4.51
17/5/2016	-	Cloudy	Surface	-	-	-	-	-	-	-	-	-	-	-	-	-	-	-	-
	10:05		Middle	1.5	24.60	24.60	24.6	8.46	8.46	8.5	31.07	31.07	31.1	63.5	62.9	63.2	4.43	4.38	4.41
	-		Bottom	-	-	-	-	-	-	-	-	-	-	-	-	-	-	-	-
19/5/2016	16:25	Fine	Surface	1.0	25.60	25.60	25.6	8.44	8.49	8.5	29.42	29.42	29.4	58.0	58.6	58.3	4.00	4.05	4.03
	-		Middle	2.5	-	-	-	-	-	-	-	-	-	-	-	-	-	-	-
	16:27		Bottom	4.0	25.30	25.30	25.3	8.51	8.51	8.5	30.36	30.36	30.4	60.0	61.5	60.8	4.14	4.25	4.20
21/5/2016	18:00	Cloudy	Surface	1.0	26.10	26.10	26.1	8.48	8.48	8.5	22.82	22.82	22.8	51.0	51.3	51.2	3.63	3.65	3.64
	-		Middle	2.0	-	-	-	-	-	-	-	-	-	-	-	-	-	-	-
	18:02		Bottom	3.0	26.20	26.20	26.2	8.40	8.40	8.4	22.34	22.34	22.3	58.8	59.1	59.0	4.21	4.30	4.26
23/5/2016	18:50	Cloudy	Surface	1.0	26.40	26.30	26.4	8.37	8.37	8.4	26.62	26.63	26.6	53.7	54.1	53.9	3.75	3.78	3.77
	-		Middle	2.0	-	-	-	-	-	-	-	-	-	-	-	-	-	-	-
	18:51		Bottom	3.0	26.00	26.00	26.0	8.40	8.40	8.4	26.25	26.25	26.3	54.3	54.7	54.5	3.79	3.81	3.80
25/5/2016	22:06	Cloudy	Surface	1.0	26.90	26.90	26.9	8.42	8.42	8.4	24.03	24.03	24.0	56.6	56.9	56.8	3.86	3.90	3.88
	-		Middle	2.5	-	-	-	-	-	-	-	-	-	-	-	-	-	-	-
	22:07		Bottom	4.0	27.00	27.00	27.0	8.39	8.39	8.4	23.99	23.99	24.0	57.1	59.0	58.1	3.91	4.02	3.97

Remarks:  
Single underline denotes exceedance over Action Level.  
Double underline denotes exceedance over Limit Level.



**Water Monitoring Result at C6 - Excelsior Hotel  
Mid-Ebb Tide**

Date	Time	Weater Condition	Sampling Depth		Water Temperature			pH			Salinity			DO Saturation			DO		
					°C			-			ppt			%			mg/L		
			m	Value	Average	Value	Average	Value	Average	Value	Average	Value	Average	Value	Average	Value	Average		
27/4/2016	14:50	Fine	Surface	1	23.50	23.50	23.5	8.37	8.37	8.4	27.46	27.46	27.5	59.0	58.8	58.9	4.27	4.26	4.27
	-		Middle	2	-	-	-	-	-	-	-	-	-	-	-	-	-	-	-
	14:52		Bottom	3	23.70	23.70	23.7	8.39	8.39	8.4	26.70	26.70	26.7	65.8	65.6	65.7	4.79	4.77	4.78
29/4/2016	15:57	Fine	Surface	1	22.50	22.50	22.5	8.52	8.52	8.5	29.85	29.85	29.9	67.3	68.1	67.7	4.90	4.95	4.93
	-		Middle	2	-	-	-	-	-	-	-	-	-	-	-	-	-	-	
	15:55		Bottom	3	22.40	22.40	22.4	8.52	8.52	8.5	30.74	30.74	30.7	75.8	73.4	74.6	5.28	5.32	5.30
3/5/2016	-	Fine	Surface	-	-	-	-	-	-	-	-	-	-	-	-	-	-	-	
	11:10		Middle	2	24.60	24.60	24.6	8.47	8.47	8.5	28.28	28.28	28.3	61.0	61.3	61.2	4.31	4.34	4.33
	-		Bottom	-	-	-	-	-	-	-	-	-	-	-	-	-	-	-	
5/5/2016	-	Fine	Surface	-	-	-	-	-	-	-	-	-	-	-	-	-	-	-	
	10:25		Middle	1	24.70	24.70	24.7	8.22	8.22	8.2	28.83	28.83	28.8	54.7	53.6	54.2	3.84	3.77	3.81
	-		Bottom	-	-	-	-	-	-	-	-	-	-	-	-	-	-	-	
7/5/2016	12:00	Fine	Surface	1	25.30	25.30	25.3	8.44	8.44	8.4	29.18	29.18	29.2	59.7	59.5	59.6	4.16	4.15	4.16
	-		Middle	2	-	-	-	-	-	-	-	-	-	-	-	-	-	-	
	12:02		Bottom	3	25.40	25.10	25.3	8.41	8.41	8.4	29.04	29.04	29.0	66.7	66.6	66.7	4.66	4.65	4.66
9/5/2016	-	Fine	Surface	-	-	-	-	-	-	-	-	-	-	-	-	-	-	-	
	11:50		Middle	2	25.60	25.60	25.6	8.36	8.36	8.4	29.57	29.57	29.6	71.0	71.5	71.3	4.91	4.94	4.93
	-		Bottom	-	-	-	-	-	-	-	-	-	-	-	-	-	-	-	
11/5/2016	-	Fine	Surface	-	-	-	-	-	-	-	-	-	-	-	-	-	-	-	
	17:25		Middle	2	24.50	24.50	24.5	8.43	8.43	8.4	27.75	27.75	27.8	54.4	55.1	54.8	3.87	3.91	3.89
	-		Bottom	-	-	-	-	-	-	-	-	-	-	-	-	-	-	-	
13/5/2016	-	Fine	Surface	-	-	-	-	-	-	-	-	-	-	-	-	-	-	-	
	15:25		Middle	2	24.50	24.50	24.5	8.45	8.45	8.5	30.36	30.36	30.4	61.8	62.0	61.9	4.33	4.35	4.34
	-		Bottom	-	-	-	-	-	-	-	-	-	-	-	-	-	-	-	
17/5/2016	14:58	Fine	Surface	1	24.50	24.50	24.5	8.59	8.59	8.6	29.47	29.47	29.5	71.0	71.1	71.1	5.00	5.01	5.01
	-		Middle	2	-	-	-	-	-	-	-	-	-	-	-	-	-	-	
	15:00		Bottom	3	24.50	24.50	24.5	8.57	8.57	8.6	29.61	29.61	29.6	74.7	74.8	74.8	5.24	5.25	5.25
19/5/2016	11:10	Fine	Surface	1	25.20	25.20	25.2	8.54	8.54	8.5	31.07	31.07	31.1	71.4	70.5	71.0	4.92	4.86	4.89
	-		Middle	2	-	-	-	-	-	-	-	-	-	-	-	-	-	-	
	11:15		Bottom	3	25.20	25.20	25.2	8.54	8.54	8.5	31.17	31.17	31.2	74.2	74.5	74.4	5.12	5.14	5.13
21/5/2016	-	Cloudy	Surface	-	-	-	-	-	-	-	-	-	-	-	-	-	-	-	
	14:50		Middle	2	25.60	25.60	25.6	8.46	8.46	8.5	30.09	30.09	30.1	61.2	61.5	61.4	4.22	4.24	4.23
	-		Bottom	-	-	-	-	-	-	-	-	-	-	-	-	-	-	-	
23/5/2016	11:23	Fine	Surface	1	26.60	26.60	26.6	8.38	8.38	8.4	27.07	27.07	27.1	65.8	65.7	65.8	4.53	4.52	4.53
	-		Middle	2	-	-	-	-	-	-	-	-	-	-	-	-	-	-	
	11:25		Bottom	3	26.20	26.20	26.2	8.37	8.37	8.4	29.31	29.31	29.3	73.8	72.0	72.9	5.06	4.93	5.00
25/5/2016	-	Fine	Surface	-	-	-	-	-	-	-	-	-	-	-	-	-	-	-	
	16:13		Middle	2	26.60	26.60	26.6	8.38	8.38	8.4	28.27	28.27	28.3	51.3	51.2	51.3	3.50	3.49	3.50
	-		Bottom	-	-	-	-	-	-	-	-	-	-	-	-	-	-	-	

Remarks:  
Single underline denotes exceedance over Action Level.  
Double underline denotes exceedance over Limit Level.



**Water Monitoring Result at Ex-WPCWA SW - South-western corners of ex-Public Cargo Works Area  
Mid-Ebb Tide**

Date	Time	Weater Condition	Sampling Depth		Water Temperature			pH			Salinity			DO Saturation			DO		
					°C			-			ppt			%			mg/L		
			m	Value	Average	Value	Average	Value	Average	Value	Average	Value	Average	Value	Average	Value	Average		
27/4/2016	-	Fine	Surface	-	-	-	-	-	-	-	-	-	-	-	-	-	-	-	-
	14:29		Middle	1.0	24.40	24.40	24.4	8.75	8.75	8.8	8.36	8.35	8.4	48.9	48.8	48.9	3.89	3.89	3.89
	-		Bottom	-	-	-	-	-	-	-	-	-	-	-	-	-	-	-	-
29/4/2016	-	Fine	Surface	-	-	-	-	-	-	-	-	-	-	-	-	-	-	-	-
	15:25		Middle	1.5	22.50	22.50	22.5	8.46	8.46	8.5	29.90	29.90	29.9	65.1	64.3	64.7	4.74	4.68	4.71
	-		Bottom	-	-	-	-	-	-	-	-	-	-	-	-	-	-	-	-
3/5/2016	-	Fine	Surface	-	-	-	-	-	-	-	-	-	-	-	-	-	-	-	-
	10:51		Middle	1.0	23.60	23.60	23.6	8.49	8.49	8.5	24.22	24.22	24.2	42.4	40.2	41.3	3.13	2.97	<u>3.05</u>
	-		Bottom	-	-	-	-	-	-	-	-	-	-	-	-	-	-	-	-
5/5/2016	-	Fine	Surface	-	-	-	-	-	-	-	-	-	-	-	-	-	-	-	-
	10:05		Middle	1.5	24.50	24.50	24.5	8.22	8.22	8.2	27.60	27.60	27.6	56.4	56.0	56.2	4.00	3.96	3.98
	-		Bottom	-	-	-	-	-	-	-	-	-	-	-	-	-	-	-	-
7/5/2016	-	Fine	Surface	-	-	-	-	-	-	-	-	-	-	-	-	-	-	-	-
	11:44		Middle	1.0	24.80	24.80	24.8	8.33	8.33	8.3	25.08	25.08	25.1	39.4	40.1	39.8	2.83	2.88	<u>2.86</u>
	-		Bottom	-	-	-	-	-	-	-	-	-	-	-	-	-	-	-	-
9/5/2016	-	Fine	Surface	-	-	-	-	-	-	-	-	-	-	-	-	-	-	-	-
	15:15		Middle	1.0	25.10	25.10	25.1	8.39	8.39	8.4	17.92	17.92	17.9	34.1	35.1	34.6	2.54	2.41	<u>2.48</u>
	-		Bottom	-	-	-	-	-	-	-	-	-	-	-	-	-	-	-	-
11/5/2016	-	Fine	Surface	-	-	-	-	-	-	-	-	-	-	-	-	-	-	-	-
	14:30		Middle	1.0	25.40	25.40	25.4	8.31	8.31	8.3	28.01	28.01	28.0	57.7	57.0	57.4	4.01	3.95	3.98
	-		Bottom	-	-	-	-	-	-	-	-	-	-	-	-	-	-	-	-
13/5/2016	-	Fine	Surface	-	-	-	-	-	-	-	-	-	-	-	-	-	-	-	-
	16:34		Middle	1.0	24.40	24.40	24.4	8.52	8.52	8.5	29.56	29.36	29.5	53.9	53.5	53.7	3.81	3.78	3.80
	-		Bottom	-	-	-	-	-	-	-	-	-	-	-	-	-	-	-	-
17/5/2016	-	Fine	Surface	-	-	-	-	-	-	-	-	-	-	-	-	-	-	-	-
	14:35		Middle	1.5	24.60	24.60	24.6	8.49	8.49	8.5	28.54	28.54	28.5	69.9	69.4	69.7	4.94	4.91	4.93
	-		Bottom	-	-	-	-	-	-	-	-	-	-	-	-	-	-	-	-
19/5/2016	-	Fine	Surface	-	-	-	-	-	-	-	-	-	-	-	-	-	-	-	-
	10:44		Middle	1.0	25.00	25.00	25.0	8.53	8.53	8.5	28.79	28.79	28.8	46.3	46.2	46.3	3.25	3.24	3.25
	-		Bottom	-	-	-	-	-	-	-	-	-	-	-	-	-	-	-	-
21/5/2016	-	Cloudy	Surface	-	-	-	-	-	-	-	-	-	-	-	-	-	-	-	-
	14:30		Middle	1.0	25.30	25.30	25.3	8.61	8.61	8.6	20.14	20.14	20.1	55.4	55.1	55.3	4.06	4.03	4.05
	-		Bottom	-	-	-	-	-	-	-	-	-	-	-	-	-	-	-	-
23/5/2016	-	Fine	Surface	-	-	-	-	-	-	-	-	-	-	-	-	-	-	-	-
	11:09		Middle	1.0	25.80	25.80	25.8	8.40	8.40	8.4	32.24	30.24	31.2	50.2	53.3	51.8	3.79	3.65	3.72
	-		Bottom	-	-	-	-	-	-	-	-	-	-	-	-	-	-	-	-
25/5/2016	-	Fine	Surface	-	-	-	-	-	-	-	-	-	-	-	-	-	-	-	-
	16:00		Middle	1.0	26.20	26.20	26.2	8.45	8.45	8.5	23.71	23.71	23.7	43.5	42.5	43.0	3.07	3.00	<u>3.04</u>
	-		Bottom	-	-	-	-	-	-	-	-	-	-	-	-	-	-	-	-

Remarks:  
Single underline denotes exceedance over Action Level.  
Double underline denotes exceedance over Limit Level.



**Water Monitoring Result at Ex-WPCWA SE - South-eastern corners of ex-Public Cargo Works Area  
Mid-Ebb Tide**

Date	Time	Weather Condition	Sampling Depth		Water Temperature			pH		Salinity		DO Saturation		DO					
					°C			-		ppt		%		mg/L					
			m	Value	Average	Value	Average	Value	Average	Value	Average	Value	Average	Value	Average				
27/4/2016	-	Fine	Surface	-	-	-	-	-	-	-	-	-	-	-	-	-	-	-	
	-		Middle	0.0	-	-	-	-	-	-	-	-	-	-	-	-	-	-	
	-		Bottom	-	-	-	-	-	-	-	-	-	-	-	-	-	-	-	
29/4/2016	-	Fine	Surface	-	-	-	-	-	-	-	-	-	-	-	-	-	-	-	
	-		Middle	0.0	-	-	-	-	-	-	-	-	-	-	-	-	-	-	
	-		Bottom	-	-	-	-	-	-	-	-	-	-	-	-	-	-	-	
3/5/2016	-	Fine	Surface	-	-	-	-	-	-	-	-	-	-	-	-	-	-	-	
	-		Middle	0.0	-	-	-	-	-	-	-	-	-	-	-	-	-	-	
	-		Bottom	-	-	-	-	-	-	-	-	-	-	-	-	-	-	-	
5/5/2016	-	Fine	Surface	-	-	-	-	-	-	-	-	-	-	-	-	-	-	-	
	-		Middle	0.0	-	-	-	-	-	-	-	-	-	-	-	-	-	-	
	-		Bottom	-	-	-	-	-	-	-	-	-	-	-	-	-	-	-	
7/5/2016	-	Fine	Surface	-	-	-	-	-	-	-	-	-	-	-	-	-	-	-	
	-		Middle	0.0	-	-	-	-	-	-	-	-	-	-	-	-	-	-	
	-		Bottom	-	-	-	-	-	-	-	-	-	-	-	-	-	-	-	
9/5/2016	-	Fine	Surface	-	-	-	-	-	-	-	-	-	-	-	-	-	-	-	
	-		Middle	0.0	-	-	-	-	-	-	-	-	-	-	-	-	-	-	
	-		Bottom	-	-	-	-	-	-	-	-	-	-	-	-	-	-	-	
11/5/2016	-	Fine	Surface	-	-	-	-	-	-	-	-	-	-	-	-	-	-	-	
	14:32		Middle	1.0	25.00	25.00	25.0	8.35	8.35	8.4	28.24	28.24	28.2	61.9	62.4	62.2	4.36	4.39	4.38
	-		Bottom	-	-	-	-	-	-	-	-	-	-	-	-	-	-	-	-
13/5/2016	-	Fine	Surface	-	-	-	-	-	-	-	-	-	-	-	-	-	-	-	
	16:32		Middle	1.5	24.50	24.50	24.5	8.51	8.51	8.5	3.30	3.29	3.3	57.3	57.4	57.4	4.02	4.02	4.02
	-		Bottom	-	-	-	-	-	-	-	-	-	-	-	-	-	-	-	-
17/5/2016	-	Fine	Surface	-	-	-	-	-	-	-	-	-	-	-	-	-	-	-	
	14:41		Middle	1.5	24.70	24.70	24.7	8.56	8.56	8.6	31.54	31.54	31.5	73.7	73.6	73.7	5.12	5.11	5.12
	-		Bottom	-	-	-	-	-	-	-	-	-	-	-	-	-	-	-	-
19/5/2016	10:40	Fine	Surface	1.0	25.40	25.40	25.4	8.46	8.46	8.5	31.71	31.71	31.7	60.0	58.1	59.1	4.09	3.98	4.04
	-		Middle	2.0	-	-	-	-	-	-	-	-	-	-	-	-	-	-	-
	10:42		Bottom	3.0	25.00	25.00	25.0	8.47	8.47	8.5	31.73	31.73	31.7	58.0	58.1	58.1	4.00	4.01	4.01
21/5/2016	14:20	Cloudy	Surface	1.0	25.40	25.40	25.4	8.49	8.49	8.5	21.59	21.59	21.6	60.8	60.4	60.6	4.41	4.38	4.40
	-		Middle	2.0	-	-	-	-	-	-	-	-	-	-	-	-	-	-	-
	14:22		Bottom	3.0	25.30	25.30	25.3	8.42	8.42	8.4	28.61	28.61	28.6	70.4	70.8	70.6	4.92	4.94	4.93
23/5/2016	11:05	Fine	Surface	1.0	26.00	26.00	26.0	8.49	8.49	8.5	26.34	26.34	26.3	49.7	49.5	49.6	3.47	3.45	<u>3.46</u>
	-		Middle	2.0	-	-	-	-	-	-	-	-	-	-	-	-	-	-	-
	11:07		Bottom	3.0	26.00	26.00	26.0	8.42	8.42	8.4	29.83	29.83	29.8	66.5	68.2	67.4	4.56	4.67	4.62
25/5/2016	15:56	Fine	Surface	1.0	26.40	26.40	26.4	8.51	8.51	8.5	24.69	24.69	24.7	47.1	46.6	46.9	3.29	3.25	<u>3.27</u>
	-		Middle	2.0	-	-	-	-	-	-	-	-	-	-	-	-	-	-	-
	15:58		Bottom	3.0	26.50	26.50	26.5	8.39	8.39	8.4	28.14	28.14	28.1	63.0	63.1	63.1	4.32	4.33	4.33

Remarks:  
Single underline denotes exceedance over Action Level.  
Double underline denotes exceedance over Limit Level.



**Water Monitoring Result at C6 - Excelsior Hotel  
Mid-Flood Tide**

Date	Time	Weather Condition	Sampling Depth		Water Temperature			pH			Salinity		DO Saturation		DO				
					°C			-			ppt		%		mg/L				
			m	Value	Average	Value	Average	Value	Average	Value	Average	Value	Average	Value	Average				
27/4/2016	-	Cloudy	Surface	-	-	-	-	-	-	-	-	-	-	-	-	-	-	-	
	10:30		Middle	1.5	23.40	23.40	23.4	8.49	8.49	8.5	22.27	22.27	22.3	70.5	70.8	70.7	5.27	5.30	5.29
	-		Bottom	-	-	-	-	-	-	-	-	-	-	-	-	-	-	-	-
29/4/2016	10:57	Fine	Surface	1.0	23.10	23.10	23.1	8.52	8.52	8.5	29.29	29.29	29.3	71.4	71.4	71.4	5.16	5.16	5.16
	-		Middle	2.0	-	-	-	-	-	-	-	-	-	-	-	-	-	-	-
	10:59		Bottom	3.0	22.80	22.80	22.8	8.49	8.49	8.5	30.02	30.02	30.0	74.7	75.4	75.1	5.40	5.46	5.43
3/5/2016	-	Fine	Surface	-	-	-	-	-	-	-	-	-	-	-	-	-	-	-	-
	14:55		Middle	1.5	24.80	24.80	24.8	8.44	8.44	8.4	28.59	28.59	28.6	62.0	62.5	62.3	4.37	4.40	4.39
	-		Bottom	-	-	-	-	-	-	-	-	-	-	-	-	-	-	-	-
5/5/2016	-	Fine	Surface	-	-	-	-	-	-	-	-	-	-	-	-	-	-	-	-
	17:00		Middle	1.5	24.60	24.60	24.6	8.42	8.42	8.4	29.84	29.84	29.8	62.7	62.5	62.6	4.37	4.36	4.37
	-		Bottom	-	-	-	-	-	-	-	-	-	-	-	-	-	-	-	-
7/5/2016	-	Cloudy	Surface	-	-	-	-	-	-	-	-	-	-	-	-	-	-	-	-
	17:00		Middle	1.0	26.50	26.50	26.5	8.32	8.32	8.3	27.93	27.93	27.9	57.7	58.4	58.1	3.95	4.00	3.98
	-		Bottom	-	-	-	-	-	-	-	-	-	-	-	-	-	-	-	-
9/5/2016	9:58	Fine	Surface	1.0	25.50	25.50	25.5	8.31	8.31	8.3	29.36	29.36	29.4	67.2	65.4	66.3	4.63	4.52	4.58
	-		Middle	2.0	-	-	-	-	-	-	-	-	-	-	-	-	-	-	-
	10:00		Bottom	3.0	25.30	25.30	25.3	8.37	8.37	8.4	29.73	29.73	29.7	64.3	65.2	64.8	4.46	4.51	4.49
11/5/2016	12:05	Fine	Surface	1.0	25.10	25.10	25.1	8.44	8.44	8.4	28.18	28.18	28.2	65.0	64.7	64.9	4.56	4.54	4.55
	-		Middle	2.0	-	-	-	-	-	-	-	-	-	-	-	-	-	-	-
	12:07		Bottom	3.0	24.90	24.90	24.9	8.43	8.43	8.4	28.87	28.87	28.9	71.8	72.0	71.9	5.06	5.07	5.07
13/5/2016	11:40	Fine	Surface	1.0	24.80	24.80	24.8	8.35	8.35	8.4	29.64	29.64	29.6	73.1	72.7	72.9	5.12	5.09	5.11
	-		Middle	2.0	-	-	-	-	-	-	-	-	-	-	-	-	-	-	-
	11:42		Bottom	3.0	24.80	24.80	24.8	8.39	8.39	8.4	30.38	30.38	30.4	73.1	73.2	73.2	5.12	5.13	5.13
17/5/2016	10:40	Cloudy	Surface	1.0	24.60	24.60	24.6	8.54	8.54	8.5	30.56	30.56	30.6	67.1	66.7	66.9	4.70	4.67	4.69
	-		Middle	2.0	-	-	-	-	-	-	-	-	-	-	-	-	-	-	-
	10:42		Bottom	3.0	24.50	24.50	24.5	8.53	8.53	8.5	30.72	30.72	30.7	71.4	71.6	71.5	4.99	5.00	5.00
19/5/2016	17:00	Fine	Surface	1.0	25.40	25.40	25.4	8.49	8.49	8.5	30.48	30.48	30.5	66.4	67.2	66.8	4.58	4.64	4.61
	-		Middle	2.0	-	-	-	-	-	-	-	-	-	-	-	-	-	-	-
	17:22		Bottom	3.0	25.30	25.30	25.3	8.49	8.49	8.5	31.16	31.16	31.2	72.0	72.3	72.2	4.96	4.99	4.98
21/5/2016	-	Cloudy	Surface	-	-	-	-	-	-	-	-	-	-	-	-	-	-	-	-
	17:40		Middle	1.0	26.10	26.10	26.1	8.46	8.46	8.5	29.53	29.53	29.5	69.0	69.9	69.5	4.75	4.79	4.77
	-		Bottom	-	-	-	-	-	-	-	-	-	-	-	-	-	-	-	-
23/5/2016	-	Cloudy	Surface	-	-	-	-	-	-	-	-	-	-	-	-	-	-	-	-
	18:05		Middle	1.0	26.30	26.30	26.3	8.39	8.39	8.4	29.15	29.15	29.2	65.3	65.5	65.4	4.47	4.48	4.48
	-		Bottom	-	-	-	-	-	-	-	-	-	-	-	-	-	-	-	-
25/5/2016	-	Cloudy	Surface	-	-	-	-	-	-	-	-	-	-	-	-	-	-	-	-
	22:30		Middle	1.5	27.00	27.00	27.0	8.32	8.32	8.3	28.11	28.12	28.1	58.0	59.5	58.8	3.95	4.05	4.00
	-		Bottom	-	-	-	-	-	-	-	-	-	-	-	-	-	-	-	-

Remarks:  
Single underline denotes exceedance over Action Level.  
Double underline denotes exceedance over Limit Level.





**Water Monitoring Result at Ex-WPCWA SW - South-western corners of ex-Public Cargo Works Area  
Mid-Flood Tide**

Date	Time	Weather Condition	Sampling Depth		Water Temperature			pH			Salinity			DO Saturation			DO		
					°C			-			ppt			%			mg/L		
			m	Value	Average	Value	Average	Value	Average	Value	Average	Value	Average	Value	Average	Value	Average		
27/4/2016	-	Cloudy	Surface	-	-	-	-	-	-	-	-	-	-	-	-	-	-	-	-
	10:10		Middle	1.5	23.90	23.90	23.9	8.68	8.68	8.7	13.58	13.58	13.6	68.6	66.8	67.7	5.37	5.22	5.30
	-		Bottom	-	-	-	-	-	-	-	-	-	-	-	-	-	-	-	-
29/4/2016	-	Fine	Surface	-	-	-	-	-	-	-	-	-	-	-	-	-	-	-	-
	8:50		Middle	1.5	22.80	22.80	22.8	8.23	8.23	8.2	30.09	30.09	30.1	70.8	70.7	70.8	5.11	5.09	5.10
	-		Bottom	-	-	-	-	-	-	-	-	-	-	-	-	-	-	-	-
3/5/2016	-	Fine	Surface	-	-	-	-	-	-	-	-	-	-	-	-	-	-	-	-
	14:38		Middle	1.0	24.20	24.20	24.2	8.47	8.47	8.5	29.12	29.12	29.1	54.2	55.7	55.0	3.84	3.94	3.89
	-		Bottom	-	-	-	-	-	-	-	-	-	-	-	-	-	-	-	-
5/5/2016	-	Fine	Surface	-	-	-	-	-	-	-	-	-	-	-	-	-	-	-	-
	16:35		Middle	1.5	24.30	24.30	24.3	8.40	8.40	8.4	28.31	28.31	28.3	52.6	53.0	52.8	3.74	3.77	3.76
	-		Bottom	-	-	-	-	-	-	-	-	-	-	-	-	-	-	-	-
7/5/2016	-	Cloudy	Surface	-	-	-	-	-	-	-	-	-	-	-	-	-	-	-	-
	17:45		Middle	1.0	26.40	26.40	26.4	8.46	8.46	8.5	22.26	22.26	22.3	59.5	59.9	59.7	4.08	4.10	4.09
	-		Bottom	-	-	-	-	-	-	-	-	-	-	-	-	-	-	-	-
9/5/2016	-	Fine	Surface	-	-	-	-	-	-	-	-	-	-	-	-	-	-	-	-
	9:25		Middle	1.5	24.90	24.90	24.9	8.20	8.32	8.3	29.01	29.01	29.0	64.7	64.4	64.6	4.52	4.50	4.51
	-		Bottom	-	-	-	-	-	-	-	-	-	-	-	-	-	-	-	-
11/5/2016	-	Fine	Surface	-	-	-	-	-	-	-	-	-	-	-	-	-	-	-	-
	11:45		Middle	1.5	24.70	24.70	24.7	8.40	8.40	8.4	26.02	26.02	26.0	56.3	55.5	55.9	4.03	3.95	3.99
	-		Bottom	-	-	-	-	-	-	-	-	-	-	-	-	-	-	-	-
13/5/2016	-	Fine	Surface	-	-	-	-	-	-	-	-	-	-	-	-	-	-	-	-
	11:25		Middle	1.0	24.50	24.50	24.5	8.56	8.56	8.6	25.33	25.33	25.3	49.0	47.5	48.3	3.54	3.43	3.49
	-		Bottom	-	-	-	-	-	-	-	-	-	-	-	-	-	-	-	-
17/5/2016	-	Cloudy	Surface	-	-	-	-	-	-	-	-	-	-	-	-	-	-	-	-
	10:02		Middle	1.0	24.60	24.60	24.6	8.46	8.46	8.5	28.23	28.23	28.2	50.0	49.7	49.9	3.54	3.52	3.53
	-		Bottom	-	-	-	-	-	-	-	-	-	-	-	-	-	-	-	-
19/5/2016	-	Fine	Surface	-	-	-	-	-	-	-	-	-	-	-	-	-	-	-	-
	16:29		Middle	1.0	25.30	25.30	25.3	8.55	8.55	8.6	29.63	29.63	29.6	56.4	56.5	56.5	3.42	3.92	3.67
	-		Bottom	-	-	-	-	-	-	-	-	-	-	-	-	-	-	-	-
21/5/2016	-	Cloudy	Surface	-	-	-	-	-	-	-	-	-	-	-	-	-	-	-	-
	18:17		Middle	1.0	26.10	26.10	26.1	8.56	8.55	8.6	24.02	24.03	24.0	52.3	52.6	52.5	3.69	3.72	3.71
	-		Bottom	-	-	-	-	-	-	-	-	-	-	-	-	-	-	-	-
23/5/2016	-	Cloudy	Surface	-	-	-	-	-	-	-	-	-	-	-	-	-	-	-	-
	18:45		Middle	1.0	26.10	26.10	26.1	8.50	8.50	8.5	21.97	21.97	22.0	52.0	52.3	52.2	3.70	3.72	3.71
	-		Bottom	-	-	-	-	-	-	-	-	-	-	-	-	-	-	-	-
25/5/2016	-	Cloudy	Surface	-	-	-	-	-	-	-	-	-	-	-	-	-	-	-	-
	22:00		Middle	1.5	26.70	26.70	26.7	8.43	8.43	8.4	22.46	22.46	22.5	53.1	56.1	54.6	3.79	4.01	3.90
	-		Bottom	-	-	-	-	-	-	-	-	-	-	-	-	-	-	-	-

Remarks:  
Single underline denotes exceedance over Action Level.  
Double underline denotes exceedance over Limit Level.



**Water Monitoring Result at Ex-WPCWA SE - South-eastern corners of ex-Public Cargo Works Area  
Mid-Flood Tide**

Date	Time	Weather Condition	Sampling Depth		Water Temperature			pH		Salinity		DO Saturation		DO					
					°C			-		ppt		%		mg/L					
			m	Value	Average	Value	Average	Value	Average	Value	Average	Value	Average						
27/4/2016	-	Cloudy	Surface	-	-	-	-	-	-	-	-	-	-	-	-	-	-		
	-		Middle	0.0	-	-	-	-	-	-	-	-	-	-	-	-	-		
	-		Bottom	-	-	-	-	-	-	-	-	-	-	-	-	-	-		
29/4/2016	-	Fine	Surface	-	-	-	-	-	-	-	-	-	-	-	-	-	-		
	-		Middle	0.0	-	-	-	-	-	-	-	-	-	-	-	-	-		
	-		Bottom	-	-	-	-	-	-	-	-	-	-	-	-	-	-		
3/5/2016	-	Fine	Surface	-	-	-	-	-	-	-	-	-	-	-	-	-	-		
	-		Middle	0.0	-	-	-	-	-	-	-	-	-	-	-	-	-		
	-		Bottom	-	-	-	-	-	-	-	-	-	-	-	-	-	-		
5/5/2016	-	Fine	Surface	-	-	-	-	-	-	-	-	-	-	-	-	-	-		
	-		Middle	0.0	-	-	-	-	-	-	-	-	-	-	-	-	-		
	-		Bottom	-	-	-	-	-	-	-	-	-	-	-	-	-	-		
7/5/2016	-	Cloudy	Surface	-	-	-	-	-	-	-	-	-	-	-	-	-	-		
	-		Middle	0.0	-	-	-	-	-	-	-	-	-	-	-	-	-		
	-		Bottom	-	-	-	-	-	-	-	-	-	-	-	-	-	-		
9/5/2016	-	Fine	Surface	-	-	-	-	-	-	-	-	-	-	-	-	-	-		
	-		Middle	0.0	-	-	-	-	-	-	-	-	-	-	-	-	-		
	-		Bottom	-	-	-	-	-	-	-	-	-	-	-	-	-	-		
11/5/2016	-	Fine	Surface	-	-	-	-	-	-	-	-	-	-	-	-	-	-		
	11:47		Middle	1.5	24.50	24.50	24.5	8.39	8.39	8.4	28.53	28.53	28.5	63.7	64.5	64.1	4.51	4.57	4.54
	-		Bottom	-	-	-	-	-	-	-	-	-	-	-	-	-	-	-	
13/5/2016	11:20	Fine	Surface	1.0	24.50	24.50	24.5	8.57	8.57	8.6	31.27	31.27	31.3	68.0	69.1	68.6	4.73	4.81	4.77
	-		Middle	2.5	-	-	-	-	-	-	-	-	-	-	-	-	-	-	
	11:22		Bottom	4.0	24.40	24.40	24.4	8.52	8.52	8.5	30.77	30.77	30.8	64.4	64.3	64.4	4.51	4.50	4.51
17/5/2016	-	Cloudy	Surface	-	-	-	-	-	-	-	-	-	-	-	-	-	-		
	10:05		Middle	1.5	24.60	24.60	24.6	8.46	8.46	8.5	31.07	31.07	31.1	63.5	62.9	63.2	4.43	4.38	4.41
	-		Bottom	-	-	-	-	-	-	-	-	-	-	-	-	-	-	-	
19/5/2016	16:25	Fine	Surface	1.0	25.60	25.60	25.6	8.44	8.49	8.5	29.42	29.42	29.4	58.0	58.6	58.3	4.00	4.05	4.03
	-		Middle	2.5	-	-	-	-	-	-	-	-	-	-	-	-	-	-	
	16:27		Bottom	4.0	25.30	25.30	25.3	8.51	8.51	8.5	30.36	30.36	30.4	60.0	61.5	60.8	4.14	4.25	4.20
21/5/2016	18:00	Cloudy	Surface	1.0	26.10	26.10	26.1	8.48	8.48	8.5	22.82	22.82	22.8	51.0	51.3	51.2	3.63	3.65	3.64
	-		Middle	2.0	-	-	-	-	-	-	-	-	-	-	-	-	-	-	
	18:02		Bottom	3.0	26.20	26.20	26.2	8.40	8.40	8.4	22.34	22.34	22.3	58.8	59.1	59.0	4.21	4.30	4.26
23/5/2016	18:50	Cloudy	Surface	1.0	26.40	26.30	26.4	8.37	8.37	8.4	26.62	26.63	26.6	53.7	54.1	53.9	3.75	3.78	3.77
	-		Middle	2.0	-	-	-	-	-	-	-	-	-	-	-	-	-	-	
	18:51		Bottom	3.0	26.00	26.00	26.0	8.40	8.40	8.4	26.25	26.25	26.3	54.3	54.7	54.5	3.79	3.81	3.80
25/5/2016	22:06	Cloudy	Surface	1.0	26.90	26.90	26.9	8.42	8.42	8.4	24.03	24.03	24.0	56.6	56.9	56.8	3.86	3.90	3.88
	-		Middle	2.5	-	-	-	-	-	-	-	-	-	-	-	-	-	-	
	22:07		Bottom	4.0	27.00	27.00	27.0	8.39	8.39	8.4	23.99	23.99	24.0	57.1	59.0	58.1	3.91	4.02	3.97

Remarks:  
Single underline denotes exceedance over Action Level.  
Double underline denotes exceedance over Limit Level.



**Water Monitoring Result at C6 - Excelsior Hotel  
Mid-Ebb Tide**

Date	Time	Weater Condition	Sampling Depth		Water Temperature			pH			Salinity			DO Saturation			DO		
					°C			-			ppt			%			mg/L		
			m	Value	Average	Value	Average	Value	Average	Value	Average	Value	Average	Value	Average	Value	Average		
27/4/2016	14:50	Fine	Surface	1	23.50	23.50	23.5	8.37	8.37	8.4	27.46	27.46	27.5	59.0	58.8	58.9	4.27	4.26	4.27
	-		Middle	2	-	-	-	-	-	-	-	-	-	-	-	-	-	-	-
	14:52		Bottom	3	23.70	23.70	23.7	8.39	8.39	8.4	26.70	26.70	26.7	65.8	65.6	65.7	4.79	4.77	4.78
29/4/2016	15:57	Fine	Surface	1	22.50	22.50	22.5	8.52	8.52	8.5	29.85	29.85	29.9	67.3	68.1	67.7	4.90	4.95	4.93
	-		Middle	2	-	-	-	-	-	-	-	-	-	-	-	-	-	-	
	15:55		Bottom	3	22.40	22.40	22.4	8.52	8.52	8.5	30.74	30.74	30.7	75.8	73.4	74.6	5.28	5.32	5.30
3/5/2016	-	Fine	Surface	-	-	-	-	-	-	-	-	-	-	-	-	-	-	-	
	11:10		Middle	2	24.60	24.60	24.6	8.47	8.47	8.5	28.28	28.28	28.3	61.0	61.3	61.2	4.31	4.34	4.33
	-		Bottom	-	-	-	-	-	-	-	-	-	-	-	-	-	-	-	
5/5/2016	-	Fine	Surface	-	-	-	-	-	-	-	-	-	-	-	-	-	-	-	
	10:25		Middle	1	24.70	24.70	24.7	8.22	8.22	8.2	28.83	28.83	28.8	54.7	53.6	54.2	3.84	3.77	3.81
	-		Bottom	-	-	-	-	-	-	-	-	-	-	-	-	-	-	-	
7/5/2016	12:00	Fine	Surface	1	25.30	25.30	25.3	8.44	8.44	8.4	29.18	29.18	29.2	59.7	59.5	59.6	4.16	4.15	4.16
	-		Middle	2	-	-	-	-	-	-	-	-	-	-	-	-	-	-	
	12:02		Bottom	3	25.40	25.10	25.3	8.41	8.41	8.4	29.04	29.04	29.0	66.7	66.6	66.7	4.66	4.65	4.66
9/5/2016	-	Fine	Surface	-	-	-	-	-	-	-	-	-	-	-	-	-	-	-	
	11:50		Middle	2	25.60	25.60	25.6	8.36	8.36	8.4	29.57	29.57	29.6	71.0	71.5	71.3	4.91	4.94	4.93
	-		Bottom	-	-	-	-	-	-	-	-	-	-	-	-	-	-	-	
11/5/2016	-	Fine	Surface	-	-	-	-	-	-	-	-	-	-	-	-	-	-	-	
	17:25		Middle	2	24.50	24.50	24.5	8.43	8.43	8.4	27.75	27.75	27.8	54.4	55.1	54.8	3.87	3.91	3.89
	-		Bottom	-	-	-	-	-	-	-	-	-	-	-	-	-	-	-	
13/5/2016	-	Fine	Surface	-	-	-	-	-	-	-	-	-	-	-	-	-	-	-	
	15:25		Middle	2	24.50	24.50	24.5	8.45	8.45	8.5	30.36	30.36	30.4	61.8	62.0	61.9	4.33	4.35	4.34
	-		Bottom	-	-	-	-	-	-	-	-	-	-	-	-	-	-	-	
17/5/2016	14:58	Fine	Surface	1	24.50	24.50	24.5	8.59	8.59	8.6	29.47	29.47	29.5	71.0	71.1	71.1	5.00	5.01	5.01
	-		Middle	2	-	-	-	-	-	-	-	-	-	-	-	-	-	-	
	15:00		Bottom	3	24.50	24.50	24.5	8.57	8.57	8.6	29.61	29.61	29.6	74.7	74.8	74.8	5.24	5.25	5.25
19/5/2016	11:10	Fine	Surface	1	25.20	25.20	25.2	8.54	8.54	8.5	31.07	31.07	31.1	71.4	70.5	71.0	4.92	4.86	4.89
	-		Middle	2	-	-	-	-	-	-	-	-	-	-	-	-	-	-	
	11:15		Bottom	3	25.20	25.20	25.2	8.54	8.54	8.5	31.17	31.17	31.2	74.2	74.5	74.4	5.12	5.14	5.13
21/5/2016	-	Cloudy	Surface	-	-	-	-	-	-	-	-	-	-	-	-	-	-	-	
	14:50		Middle	2	25.60	25.60	25.6	8.46	8.46	8.5	30.09	30.09	30.1	61.2	61.5	61.4	4.22	4.24	4.23
	-		Bottom	-	-	-	-	-	-	-	-	-	-	-	-	-	-	-	
23/5/2016	11:23	Fine	Surface	1	26.60	26.60	26.6	8.38	8.38	8.4	27.07	27.07	27.1	65.8	65.7	65.8	4.53	4.52	4.53
	-		Middle	2	-	-	-	-	-	-	-	-	-	-	-	-	-	-	
	11:25		Bottom	3	26.20	26.20	26.2	8.37	8.37	8.4	29.31	29.31	29.3	73.8	72.0	72.9	5.06	4.93	5.00
25/5/2016	-	Fine	Surface	-	-	-	-	-	-	-	-	-	-	-	-	-	-	-	
	16:13		Middle	2	26.60	26.60	26.6	8.38	8.38	8.4	28.27	28.27	28.3	51.3	51.2	51.3	3.50	3.49	3.50
	-		Bottom	-	-	-	-	-	-	-	-	-	-	-	-	-	-	-	

Remarks:  
Single underline denotes exceedance over Action Level.  
Double underline denotes exceedance over Limit Level.



**Water Monitoring Result at Ex-WPCWA SW - South-western corners of ex-Public Cargo Works Area  
Mid-Ebb Tide**

Date	Time	Weater Condition	Sampling Depth		Water Temperature			pH			Salinity			DO Saturation			DO		
					°C			-			ppt			%			mg/L		
			m	Value	Average	Value	Average	Value	Average	Value	Average	Value	Average	Value	Average	Value	Average		
27/4/2016	-	Fine	Surface	-	-	-	-	-	-	-	-	-	-	-	-	-	-	-	-
	14:29		Middle	1.0	24.40	24.40	24.4	8.75	8.75	8.8	8.36	8.35	8.4	48.9	48.8	48.9	3.89	3.89	3.89
	-		Bottom	-	-	-	-	-	-	-	-	-	-	-	-	-	-	-	-
29/4/2016	-	Fine	Surface	-	-	-	-	-	-	-	-	-	-	-	-	-	-	-	-
	15:25		Middle	1.5	22.50	22.50	22.5	8.46	8.46	8.5	29.90	29.90	29.9	65.1	64.3	64.7	4.74	4.68	4.71
	-		Bottom	-	-	-	-	-	-	-	-	-	-	-	-	-	-	-	-
3/5/2016	-	Fine	Surface	-	-	-	-	-	-	-	-	-	-	-	-	-	-	-	-
	10:51		Middle	1.0	23.60	23.60	23.6	8.49	8.49	8.5	24.22	24.22	24.2	42.4	40.2	41.3	3.13	2.97	<u>3.05</u>
	-		Bottom	-	-	-	-	-	-	-	-	-	-	-	-	-	-	-	-
5/5/2016	-	Fine	Surface	-	-	-	-	-	-	-	-	-	-	-	-	-	-	-	-
	10:05		Middle	1.5	24.50	24.50	24.5	8.22	8.22	8.2	27.60	27.60	27.6	56.4	56.0	56.2	4.00	3.96	3.98
	-		Bottom	-	-	-	-	-	-	-	-	-	-	-	-	-	-	-	-
7/5/2016	-	Fine	Surface	-	-	-	-	-	-	-	-	-	-	-	-	-	-	-	-
	11:44		Middle	1.0	24.80	24.80	24.8	8.33	8.33	8.3	25.08	25.08	25.1	39.4	40.1	39.8	2.83	2.88	<u>2.86</u>
	-		Bottom	-	-	-	-	-	-	-	-	-	-	-	-	-	-	-	-
9/5/2016	-	Fine	Surface	-	-	-	-	-	-	-	-	-	-	-	-	-	-	-	-
	15:15		Middle	1.0	25.10	25.10	25.1	8.39	8.39	8.4	17.92	17.92	17.9	34.1	35.1	34.6	2.54	2.41	<u>2.48</u>
	-		Bottom	-	-	-	-	-	-	-	-	-	-	-	-	-	-	-	-
11/5/2016	-	Fine	Surface	-	-	-	-	-	-	-	-	-	-	-	-	-	-	-	-
	14:30		Middle	1.0	25.40	25.40	25.4	8.31	8.31	8.3	28.01	28.01	28.0	57.7	57.0	57.4	4.01	3.95	3.98
	-		Bottom	-	-	-	-	-	-	-	-	-	-	-	-	-	-	-	-
13/5/2016	-	Fine	Surface	-	-	-	-	-	-	-	-	-	-	-	-	-	-	-	-
	16:34		Middle	1.0	24.40	24.40	24.4	8.52	8.52	8.5	29.56	29.36	29.5	53.9	53.5	53.7	3.81	3.78	3.80
	-		Bottom	-	-	-	-	-	-	-	-	-	-	-	-	-	-	-	-
17/5/2016	-	Fine	Surface	-	-	-	-	-	-	-	-	-	-	-	-	-	-	-	-
	14:35		Middle	1.5	24.60	24.60	24.6	8.49	8.49	8.5	28.54	28.54	28.5	69.9	69.4	69.7	4.94	4.91	4.93
	-		Bottom	-	-	-	-	-	-	-	-	-	-	-	-	-	-	-	-
19/5/2016	-	Fine	Surface	-	-	-	-	-	-	-	-	-	-	-	-	-	-	-	-
	10:44		Middle	1.0	25.00	25.00	25.0	8.53	8.53	8.5	28.79	28.79	28.8	46.3	46.2	46.3	3.25	3.24	3.25
	-		Bottom	-	-	-	-	-	-	-	-	-	-	-	-	-	-	-	-
21/5/2016	-	Cloudy	Surface	-	-	-	-	-	-	-	-	-	-	-	-	-	-	-	-
	14:30		Middle	1.0	25.30	25.30	25.3	8.61	8.61	8.6	20.14	20.14	20.1	55.4	55.1	55.3	4.06	4.03	4.05
	-		Bottom	-	-	-	-	-	-	-	-	-	-	-	-	-	-	-	-
23/5/2016	-	Fine	Surface	-	-	-	-	-	-	-	-	-	-	-	-	-	-	-	-
	11:09		Middle	1.0	25.80	25.80	25.8	8.40	8.40	8.4	32.24	30.24	31.2	50.2	53.3	51.8	3.79	3.65	3.72
	-		Bottom	-	-	-	-	-	-	-	-	-	-	-	-	-	-	-	-
25/5/2016	-	Fine	Surface	-	-	-	-	-	-	-	-	-	-	-	-	-	-	-	-
	16:00		Middle	1.0	26.20	26.20	26.2	8.45	8.45	8.5	23.71	23.71	23.7	43.5	42.5	43.0	3.07	3.00	<u>3.04</u>
	-		Bottom	-	-	-	-	-	-	-	-	-	-	-	-	-	-	-	-

Remarks:  
Single underline denotes exceedance over Action Level.  
Double underline denotes exceedance over Limit Level.



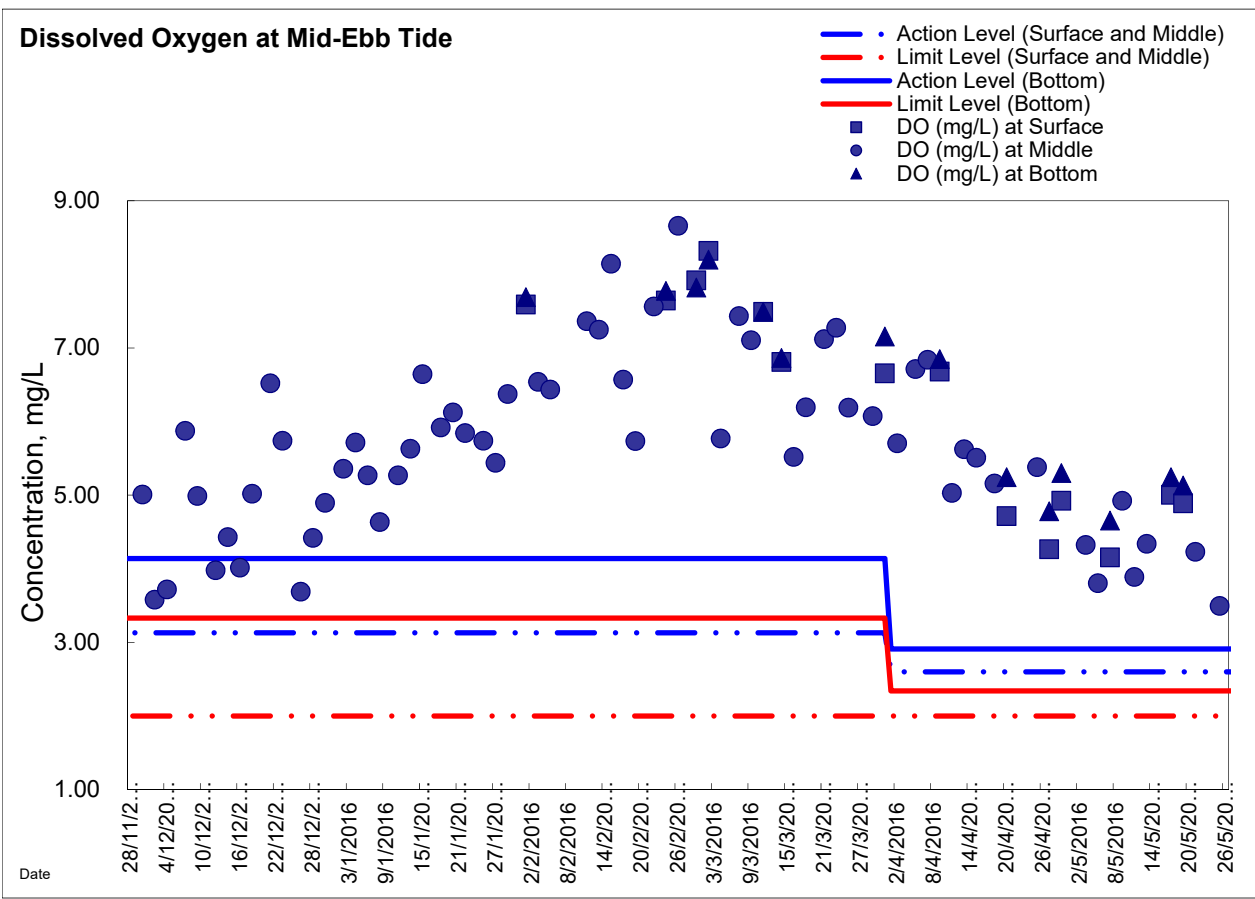
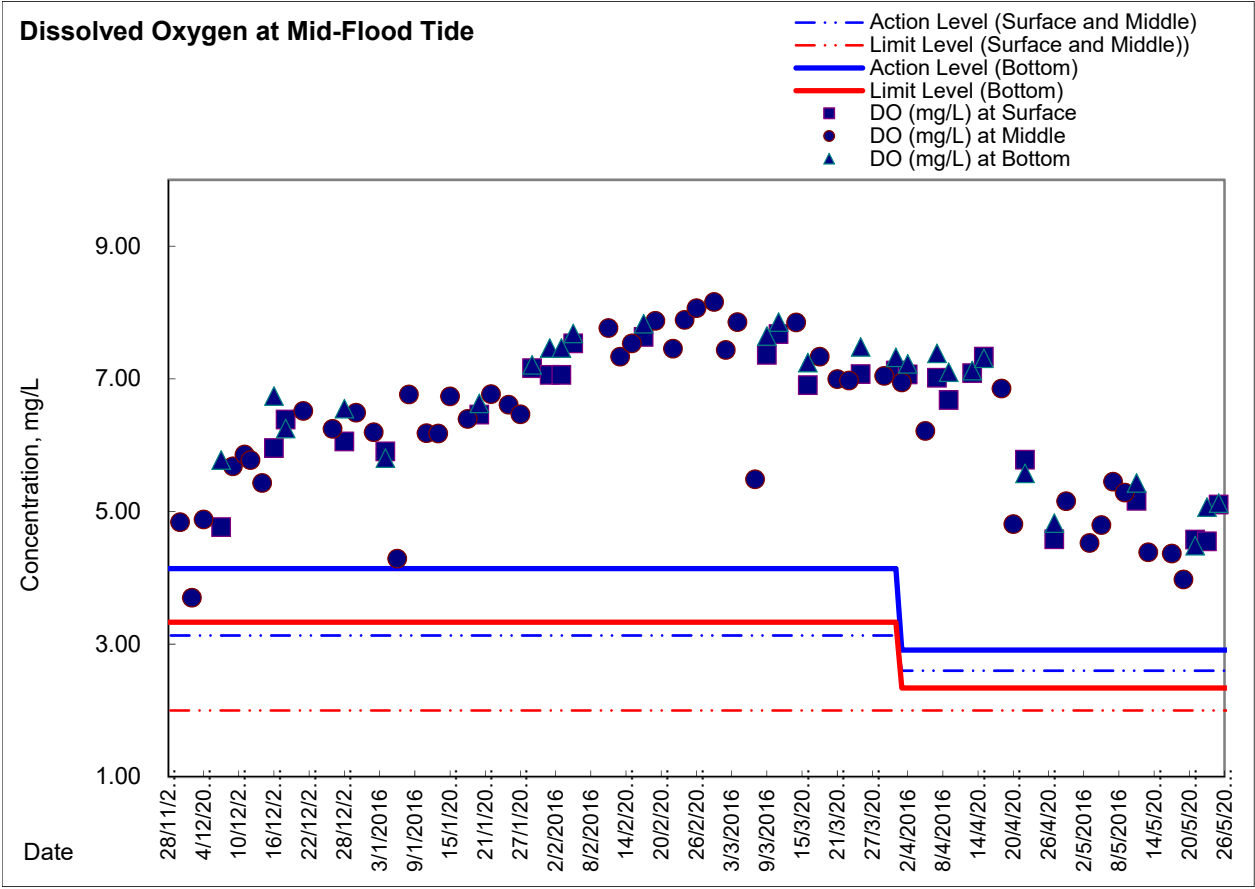
**Water Monitoring Result at Ex-WPCWA SE - South-eastern corners of ex-Public Cargo Works Area  
Mid-Ebb Tide**

Date	Time	Weather Condition	Sampling Depth		Water Temperature			pH		Salinity		DO Saturation		DO					
					°C			-		ppt		%		mg/L					
			m	Value	Average	Value	Average	Value	Average	Value	Average	Value	Average	Value	Average				
27/4/2016	-	Fine	Surface	-	-	-	-	-	-	-	-	-	-	-	-	-	-	-	
	-		Middle	0.0	-	-	-	-	-	-	-	-	-	-	-	-	-	-	
	-		Bottom	-	-	-	-	-	-	-	-	-	-	-	-	-	-	-	
29/4/2016	-	Fine	Surface	-	-	-	-	-	-	-	-	-	-	-	-	-	-	-	
	-		Middle	0.0	-	-	-	-	-	-	-	-	-	-	-	-	-	-	
	-		Bottom	-	-	-	-	-	-	-	-	-	-	-	-	-	-	-	
3/5/2016	-	Fine	Surface	-	-	-	-	-	-	-	-	-	-	-	-	-	-	-	
	-		Middle	0.0	-	-	-	-	-	-	-	-	-	-	-	-	-	-	
	-		Bottom	-	-	-	-	-	-	-	-	-	-	-	-	-	-	-	
5/5/2016	-	Fine	Surface	-	-	-	-	-	-	-	-	-	-	-	-	-	-	-	
	-		Middle	0.0	-	-	-	-	-	-	-	-	-	-	-	-	-	-	
	-		Bottom	-	-	-	-	-	-	-	-	-	-	-	-	-	-	-	
7/5/2016	-	Fine	Surface	-	-	-	-	-	-	-	-	-	-	-	-	-	-	-	
	-		Middle	0.0	-	-	-	-	-	-	-	-	-	-	-	-	-	-	
	-		Bottom	-	-	-	-	-	-	-	-	-	-	-	-	-	-	-	
9/5/2016	-	Fine	Surface	-	-	-	-	-	-	-	-	-	-	-	-	-	-	-	
	-		Middle	0.0	-	-	-	-	-	-	-	-	-	-	-	-	-	-	
	-		Bottom	-	-	-	-	-	-	-	-	-	-	-	-	-	-	-	
11/5/2016	-	Fine	Surface	-	-	-	-	-	-	-	-	-	-	-	-	-	-	-	
	14:32		Middle	1.0	25.00	25.00	25.0	8.35	8.35	8.4	28.24	28.24	28.2	61.9	62.4	62.2	4.36	4.39	4.38
	-		Bottom	-	-	-	-	-	-	-	-	-	-	-	-	-	-	-	-
13/5/2016	-	Fine	Surface	-	-	-	-	-	-	-	-	-	-	-	-	-	-	-	
	16:32		Middle	1.5	24.50	24.50	24.5	8.51	8.51	8.5	3.30	3.29	3.3	57.3	57.4	57.4	4.02	4.02	4.02
	-		Bottom	-	-	-	-	-	-	-	-	-	-	-	-	-	-	-	-
17/5/2016	-	Fine	Surface	-	-	-	-	-	-	-	-	-	-	-	-	-	-	-	
	14:41		Middle	1.5	24.70	24.70	24.7	8.56	8.56	8.6	31.54	31.54	31.5	73.7	73.6	73.7	5.12	5.11	5.12
	-		Bottom	-	-	-	-	-	-	-	-	-	-	-	-	-	-	-	-
19/5/2016	10:40	Fine	Surface	1.0	25.40	25.40	25.4	8.46	8.46	8.5	31.71	31.71	31.7	60.0	58.1	59.1	4.09	3.98	4.04
	-		Middle	2.0	-	-	-	-	-	-	-	-	-	-	-	-	-	-	-
	10:42		Bottom	3.0	25.00	25.00	25.0	8.47	8.47	8.5	31.73	31.73	31.7	58.0	58.1	58.1	4.00	4.01	4.01
21/5/2016	14:20	Cloudy	Surface	1.0	25.40	25.40	25.4	8.49	8.49	8.5	21.59	21.59	21.6	60.8	60.4	60.6	4.41	4.38	4.40
	-		Middle	2.0	-	-	-	-	-	-	-	-	-	-	-	-	-	-	-
	14:22		Bottom	3.0	25.30	25.30	25.3	8.42	8.42	8.4	28.61	28.61	28.6	70.4	70.8	70.6	4.92	4.94	4.93
23/5/2016	11:05	Fine	Surface	1.0	26.00	26.00	26.0	8.49	8.49	8.5	26.34	26.34	26.3	49.7	49.5	49.6	3.47	3.45	<u>3.46</u>
	-		Middle	2.0	-	-	-	-	-	-	-	-	-	-	-	-	-	-	-
	11:07		Bottom	3.0	26.00	26.00	26.0	8.42	8.42	8.4	29.83	29.83	29.8	66.5	68.2	67.4	4.56	4.67	4.62
25/5/2016	15:56	Fine	Surface	1.0	26.40	26.40	26.4	8.51	8.51	8.5	24.69	24.69	24.7	47.1	46.6	46.9	3.29	3.25	<u>3.27</u>
	-		Middle	2.0	-	-	-	-	-	-	-	-	-	-	-	-	-	-	-
	15:58		Bottom	3.0	26.50	26.50	26.5	8.39	8.39	8.4	28.14	28.14	28.1	63.0	63.1	63.1	4.32	4.33	4.33

Remarks:  
Single underline denotes exceedance over Action Level.  
Double underline denotes exceedance over Limit Level.

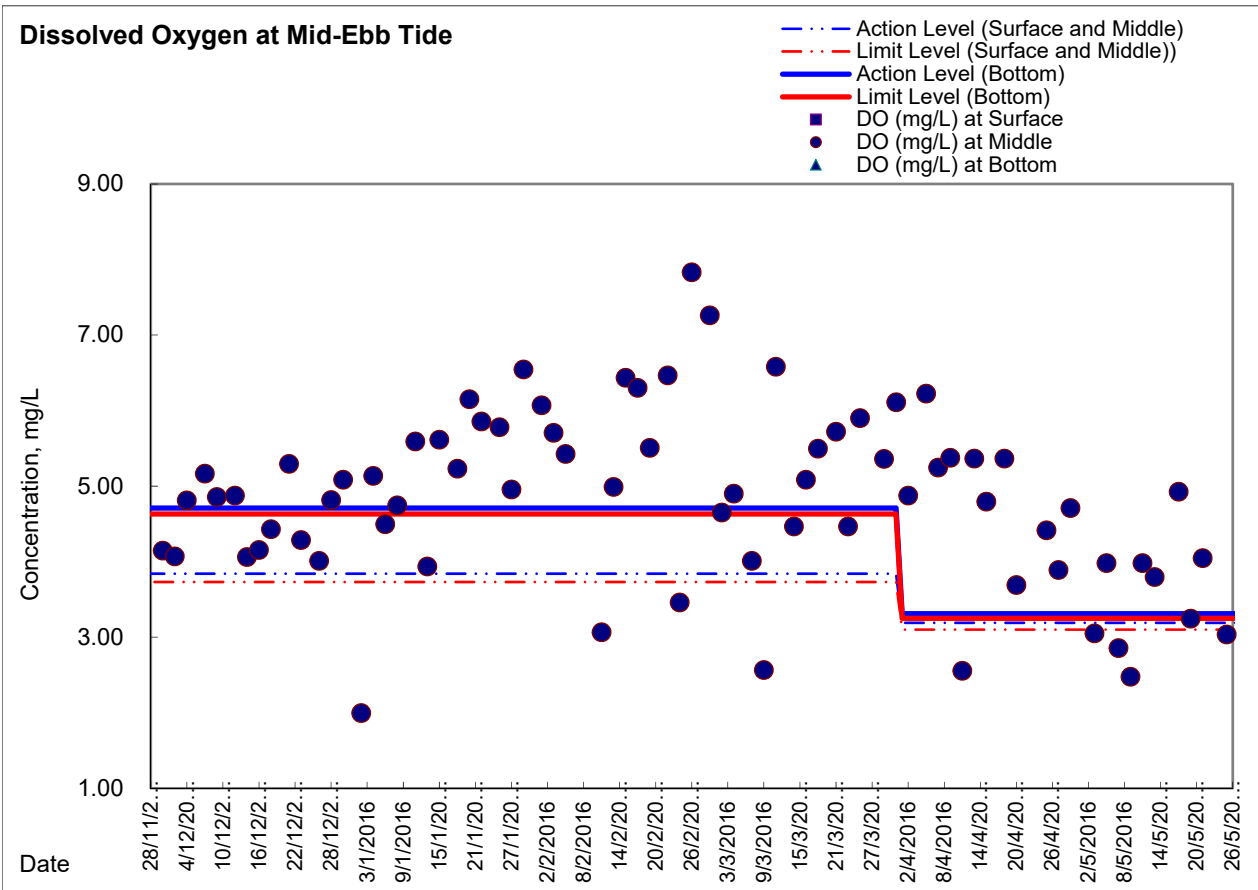
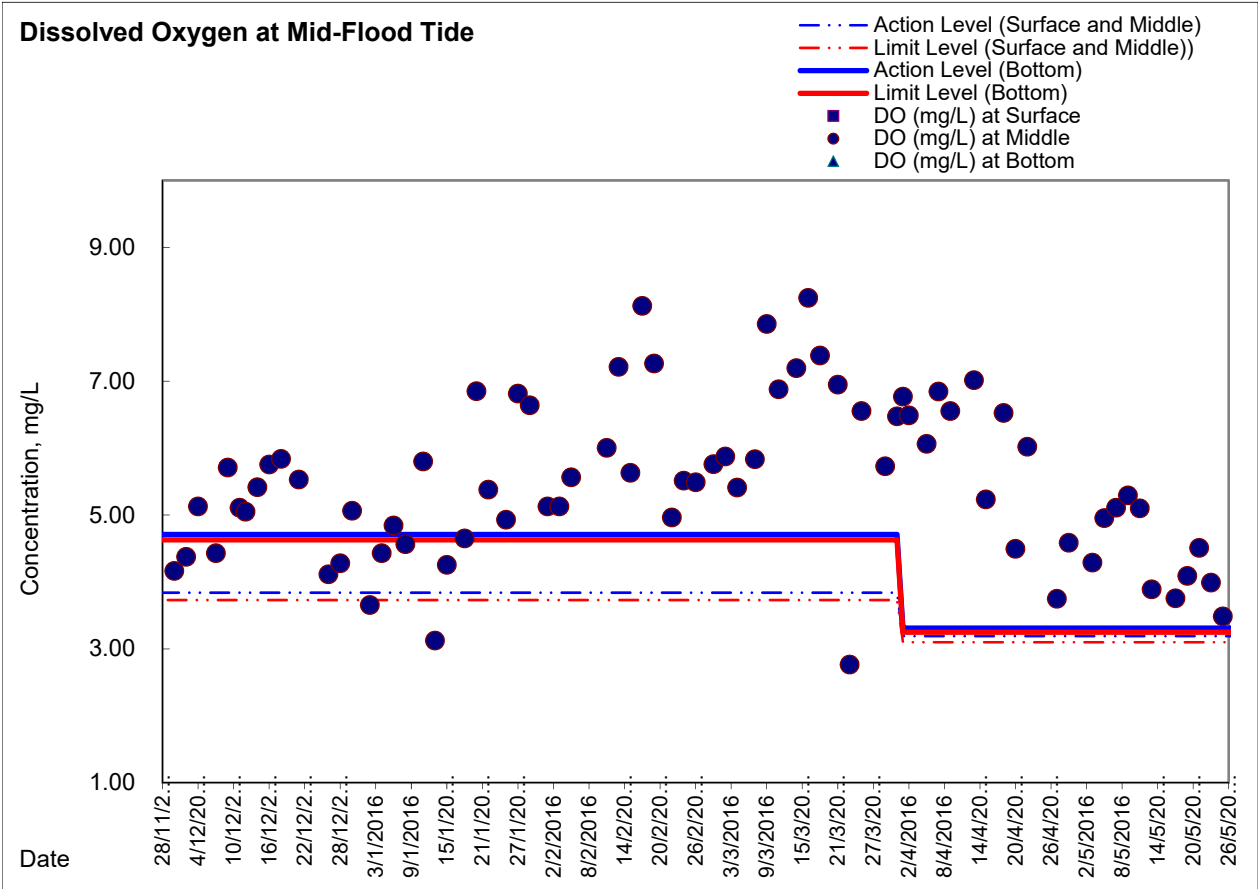


### Graphic Presentation of Enhanced Water Monitoring Results (DO) at C6 - Excelsior Hotel





### Graphic Presentation of Enhanced Water Monitoring Results (DO) at Ex-WPCWA SW - South-western corners of ex-Public Cargo Works Area





### Graphic Presentation of Enhanced Water Monitoring Results (DO) at Ex-WPCWA SE - South-eastern corners of ex-Public Cargo Works Area

